

# **Measurement Studio™ Measurement Computing™ Edition**

## **User Manual**

## **Worldwide Technical Support and Product Information**

ni.com

### **National Instruments Corporate Headquarters**

11500 North Mopac Expressway Austin, Texas 78759-3504 USA Tel: 512 683 0100

### **Worldwide Offices**

Australia 1800 300 800, Austria 43 662 457990-0, Belgium 32 (0) 2 757 0020, Brazil 55 11 3262 3599,  
Canada 800 433 3488, China 86 21 5050 9800, Czech Republic 420 224 235 774, Denmark 45 45 76 26 00,  
Finland 358 (0) 9 725 72511, France 01 57 66 24 24, Germany 49 89 7413130, India 91 80 41190000,  
Israel 972 3 6393737, Italy 39 02 41309277, Japan 0120-527196, Korea 82 02 3451 3400,  
Lebanon 961 (0) 1 33 28 28, Malaysia 1800 887710, Mexico 01 800 010 0793, Netherlands 31 (0) 348 433 466,  
New Zealand 0800 553 322, Norway 47 (0) 66 90 76 60, Poland 48 22 3390150, Portugal 351 210 311 210,  
Russia 7 495 783 6851, Singapore 1800 226 5886, Slovenia 386 3 425 42 00, South Africa 27 0 11 805 8197,  
Spain 34 91 640 0085, Sweden 46 (0) 8 587 895 00, Switzerland 41 56 2005151, Taiwan 886 02 2377 2222,  
Thailand 662 278 6777, Turkey 90 212 279 3031, United Kingdom 44 (0) 1635 523545

For further support information, refer to the [Contacting Measurement Computing Corporation](#) appendix.

To comment on National Instruments documentation, refer to the National Instruments Web site at [ni.com/info](http://ni.com/info) and enter the info code `feedback`.

# Important Information

---

## Warranty

The media on which you receive National Instruments software are warranted not to fail to execute programming instructions, due to defects in materials and workmanship, for a period of 90 days from date of shipment, as evidenced by receipts or other documentation. National Instruments will, at its option, repair or replace software media that do not execute programming instructions if National Instruments receives notice of such defects during the warranty period. National Instruments does not warrant that the operation of the software shall be uninterrupted or error free.

A Return Material Authorization (RMA) number must be obtained from the factory and clearly marked on the outside of the package before any equipment will be accepted for warranty work. National Instruments will pay the shipping costs of returning to the owner parts which are covered by warranty.

National Instruments believes that the information in this document is accurate. The document has been carefully reviewed for technical accuracy. In the event that technical or typographical errors exist, National Instruments reserves the right to make changes to subsequent editions of this document without prior notice to holders of this edition. The reader should consult National Instruments if errors are suspected. In no event shall National Instruments be liable for any damages arising out of or related to this document or the information contained in it.

EXCEPT AS SPECIFIED HEREIN, NATIONAL INSTRUMENTS MAKES NO WARRANTIES, EXPRESS OR IMPLIED, AND SPECIFICALLY DISCLAIMS ANY WARRANTY OF MERCHANTABILITY OR FITNESS FOR A PARTICULAR PURPOSE. CUSTOMER'S RIGHT TO RECOVER DAMAGES CAUSED BY FAULT OR NEGLIGENCE ON THE PART OF NATIONAL INSTRUMENTS SHALL BE LIMITED TO THE AMOUNT THEREFORE PAID BY THE CUSTOMER. NATIONAL INSTRUMENTS WILL NOT BE LIABLE FOR DAMAGES RESULTING FROM LOSS OF DATA, PROFITS, USE OF PRODUCTS, OR INCIDENTAL OR CONSEQUENTIAL DAMAGES, EVEN IF ADVISED OF THE POSSIBILITY THEREOF. This limitation of the liability of National Instruments will apply regardless of the form of action, whether in contract or tort, including negligence. Any action against National Instruments must be brought within one year after the cause of action accrues. National Instruments shall not be liable for any delay in performance due to causes beyond its reasonable control. The warranty provided herein does not cover damages, defects, malfunctions, or service failures caused by owner's failure to follow the National Instruments installation, operation, or maintenance instructions; owner's modification of the product; owner's abuse, misuse, or negligent acts; and power failure or surges, fire, flood, accident, actions of third parties, or other events outside reasonable control.

## Copyright

Under the copyright laws, this publication may not be reproduced or transmitted in any form, electronic or mechanical, including photocopying, recording, storing in an information retrieval system, or translating, in whole or in part, without the prior written consent of National Instruments Corporation.

National Instruments respects the intellectual property of others, and we ask our users to do the same. NI software is protected by copyright and other intellectual property laws. Where NI software may be used to reproduce software or other materials belonging to others, you may use NI software only to reproduce materials that you may reproduce in accordance with the terms of any applicable license or other legal restriction.

## Trademarks

National Instruments, NI, ni.com, and LabVIEW are trademarks of National Instruments Corporation. Refer to the *Terms of Use* section on [ni.com/legal](http://ni.com/legal) for more information about National Instruments trademarks.

Universal Library and Measurement Computing are trademarks of Measurement Computing Corporation. Other product and company names mentioned herein are trademarks or trade names of their respective companies.

## Patents

For patents covering National Instruments products, refer to the appropriate location: **Help»Patents** in your software, the `patents.txt` file on your media, or [ni.com/patents](http://ni.com/patents).

## WARNING REGARDING USE OF NATIONAL INSTRUMENTS PRODUCTS

(1) NATIONAL INSTRUMENTS PRODUCTS ARE NOT DESIGNED WITH COMPONENTS AND TESTING FOR A LEVEL OF RELIABILITY SUITABLE FOR USE IN OR IN CONNECTION WITH SURGICAL IMPLANTS OR AS CRITICAL COMPONENTS IN ANY LIFE SUPPORT SYSTEMS WHOSE FAILURE TO PERFORM CAN REASONABLY BE EXPECTED TO CAUSE SIGNIFICANT INJURY TO A HUMAN.

(2) IN ANY APPLICATION, INCLUDING THE ABOVE, RELIABILITY OF OPERATION OF THE SOFTWARE PRODUCTS CAN BE IMPAIRED BY ADVERSE FACTORS, INCLUDING BUT NOT LIMITED TO FLUCTUATIONS IN ELECTRICAL POWER SUPPLY, COMPUTER HARDWARE MALFUNCTIONS, COMPUTER OPERATING SYSTEM SOFTWARE FITNESS, FITNESS OF COMPILERS AND DEVELOPMENT SOFTWARE USED TO DEVELOP AN APPLICATION, INSTALLATION ERRORS, SOFTWARE AND HARDWARE COMPATIBILITY PROBLEMS, MALFUNCTIONS OR FAILURES OF ELECTRONIC MONITORING OR CONTROL DEVICES, TRANSIENT FAILURES OF ELECTRONIC SYSTEMS (HARDWARE AND/OR SOFTWARE), UNANTICIPATED USES OR MISUSES, OR ERRORS ON THE PART OF THE USER OR APPLICATIONS DESIGNER (ADVERSE FACTORS SUCH AS THESE ARE HEREAFTER COLLECTIVELY TERMED "SYSTEM FAILURES"). ANY APPLICATION WHERE A SYSTEM FAILURE WOULD CREATE A RISK OF HARM TO PROPERTY OR PERSONS (INCLUDING THE RISK OF BODILY INJURY AND DEATH) SHOULD NOT BE RELIANT SOLELY UPON ONE FORM OF ELECTRONIC SYSTEM DUE TO THE RISK OF SYSTEM FAILURE. TO AVOID DAMAGE, INJURY, OR DEATH THE USER OR APPLICATION DESIGNER MUST TAKE REASONABLY PRUDENT STEPS TO PROTECT AGAINST SYSTEM FAILURES, INCLUDING BUT NOT LIMITED TO BACK-UP OR SHUT DOWN MECHANISMS. BECAUSE EACH END-USER SYSTEM IS CUSTOMIZED AND DIFFERS FROM NATIONAL INSTRUMENTS' TESTING PLATFORMS AND BECAUSE A USER OR APPLICATION DESIGNER MAY USE NATIONAL INSTRUMENTS PRODUCTS IN COMBINATION WITH OTHER PRODUCTS IN A MANNER NOT EVALUATED OR CONTEMPLATED BY NATIONAL INSTRUMENTS, THE USER OR APPLICATION DESIGNER IS ULTIMATELY RESPONSIBLE FOR VERIFYING AND VALIDATING THE SUITABILITY OF NATIONAL INSTRUMENTS PRODUCTS WHENEVER NATIONAL INSTRUMENTS PRODUCTS ARE INCORPORATED IN A SYSTEM OR APPLICATION, INCLUDING, WITHOUT LIMITATION, THE APPROPRIATE DESIGN, PROCESS AND SAFETY LEVEL OF SUCH SYSTEM OR APPLICATION.

## **WARNING REGARDING USE OF MEASUREMENT COMPUTING CORPORATION PRODUCTS**

MEASUREMENT COMPUTING CORPORATION DOES NOT AUTHORIZE ANY MEASUREMENT COMPUTING CORPORATION PRODUCT FOR USE IN LIFE SUPPORT SYSTEMS AND/OR DEVICES WITHOUT WRITTEN APPROVAL OF THE CEO OF MEASUREMENT COMPUTING CORPORATION. LIFE SUPPORT DEVICES/SYSTEMS ARE DEVICES OR SYSTEMS WHICH, A)ARE INTENDED FOR SURGICAL IMPLANTATION INTO THE BODY, OR B)SUPPORT OR SUSTAIN LIFE AND WHOSE FAILURE TO PERFORM CAN BE REASONABLY EXPECTED TO RESULT IN INJURY. MEASUREMENT COMPUTING CORPORATION PRODUCTS ARE NOT DESIGNED WITH THE COMPONENTS REQUIRED, AND ARE NOT SUBJECT TO THE TESTING REQUIRED TO ENSURE A LEVEL OF RELIABILITY SUITABLE FOR THE TREATMENT AND DIAGNOSIS OF PEOPLE.

# Contents

---

## About This Manual

How To Use This Manual.....	ix
Conventions .....	x

## Chapter 1

### Introduction to Measurement Studio Measurement Computing Edition

Installation Requirements .....	1-2
Deployment Requirements .....	1-2
Installation Instructions.....	1-3
Installing the Current Version of Measurement Studio over Previous Versions of Measurement Studio .....	1-4
Measurement Studio Features.....	1-4
Learning Measurement Studio.....	1-5

## Chapter 2

### Measurement Studio Measurement Computing Edition .NET Class Libraries

Measurement Studio Support for Visual Studio .NET Class Library Overview.....	2-1
Analysis .....	2-2
Measurements .....	2-2
Signal Generation.....	2-2
Windowing.....	2-3
Filters .....	2-3
Signal Processing .....	2-4
Linear Algebra .....	2-4
Array and Numeric Operations .....	2-5
Curve Fitting .....	2-5
Statistics .....	2-6
Common.....	2-6
Network Variable.....	2-7
MCC-488.2 .....	2-8
Universal Library .....	2-8
MccDaq Scan Components.....	2-9
User Interface.....	2-9
Windows Forms Controls .....	2-10
Waveform Graph and Scatter Graph Controls .....	2-11
Digital Waveform Graph Control.....	2-14
Complex Graph Control .....	2-16

Legend Control .....	2-18
Numeric Controls .....	2-18
Numeric Edit Control.....	2-20
Switch and LED Controls .....	2-21
Property Editor Control.....	2-22
Windows Forms Array Controls .....	2-23
Switch and LED Array Controls.....	2-23
Numeric Edit Array Control .....	2-25
InstrumentControlStrip Control .....	2-26
ASP.NET Web Forms Controls .....	2-27
Waveform Graph and Scatter Graph Controls.....	2-28
Digital Waveform Graph Control .....	2-31
Complex Graph Control.....	2-32
Legend Control .....	2-35
Numeric Controls .....	2-35
Numeric Edit Control.....	2-38
Switch and LED Controls .....	2-39
AutoRefresh Control.....	2-40
AutoRefresh Callback.....	2-40

## Chapter 3

### Measurement Studio Integrated Tools and Features

Measurement Studio Menu.....	3-1
Creating a Measurement Studio Project.....	3-4
Adding or Removing Measurement Studio .NET Class Libraries .....	3-5

## Chapter 4

### Getting Started with Measurement Studio

Measurement Studio Walkthroughs .....	4-1
Walkthrough: Creating a Measurement Studio Application with Windows Forms Controls and Analysis.....	4-2
Walkthrough: Creating a Measurement Studio Application with Web Forms Controls and Analysis.....	4-11
Walkthrough: Creating a Measurement Studio Application with Windows Forms Controls and Network Variable.....	4-21
Walkthrough: Creating a Measurement Studio Application with Web Forms Controls and Network Variable.....	4-30
Walkthrough: Creating a Measurement Studio Measurement Computing DAQ Application.....	4-41
Walkthrough: Creating a Measurement Studio MCCDaq Scan Components Application .....	4-47
Walkthrough: Creating a Measurement Studio MCC-488.2 Application .....	4-53

**Appendix A**  
**Contacting Measurement Computing Corporation**

**Glossary**

**Index**

# About This Manual

---

The *Measurement Studio Measurement Computing Edition User Manual* introduces the concepts associated with the Measurement Studio class libraries and development tools. This manual assumes that you have a general working knowledge of Microsoft Visual Studio and the .NET Framework for .NET application development.

## How To Use This Manual

---

Measurement Studio 8.5 includes support for Visual Studio .NET 2003, Visual Studio 2005, Visual Studio 2008. This manual documents Measurement Studio for Visual Studio 2005/2008. The Measurement Studio support for Visual Studio .NET 2003, Visual Studio 2005, and Visual Studio 2008 CD includes separate, parallel sets of class libraries, integration features, and support documentation for developing with Visual Studio .NET 2003, Visual Studio 2005, and Visual Studio 2008.

The *Measurement Studio Measurement Computing Edition User Manual* is organized into four chapters. Chapter 1, *Introduction to Measurement Studio Measurement Computing Edition*, is an overview of Measurement Studio Measurement Computing Edition. This chapter includes installation and deployment requirements, installation instructions, and a list of Measurement Studio resources. Chapter 2, *Measurement Studio Measurement Computing Edition .NET Class Libraries*, includes information about the .NET class libraries. Chapter 3, *Measurement Studio Integrated Tools and Features*, includes information on using Measurement Studio Measurement Computing Edition tools and features integrated into the Visual Studio environment. Chapter 4, *Getting Started with Measurement Studio*, includes walkthroughs that guide you through step-by-step instructions on how to develop with Measurement Studio features.

Use this manual as a starting point to learn about Measurement Studio. Refer to the *NI Measurement Studio Help* within the Visual Studio environment for function reference and detailed information about the Measurement Studio class libraries, wizards, assistants, and other features.



**Note** Refer to the *Measurement Studio Measurement Computing Edition Release Notes* for updates or changes to the *Measurement Studio Measurement Computing Edition User Manual*.

# Conventions

---

The following conventions appear in this manual:

<>

Text enclosed in angle brackets represents directory names and parts of paths that may vary on different computers, such as <Windows\System>.

»

The » symbol leads you through nested menu items and dialog box options to a final action. The sequence **File»Page Setup»Options** directs you to pull down the **File** menu, select the **Page Setup** item, and select **Options** from the last dialog box.



This icon denotes a tip, which alerts you to advisory information.



This icon denotes a note, which alerts you to important information.

**bold**

Bold text denotes items that you must select or click on in the software, such as menu items and dialog box options. Bold text also denotes class library member names or emphasis.

*italic*

Italic text denotes parameters, variables, cross-references, or an introduction to a key concept. Italic text also denotes text that is a placeholder for a word or value that you must supply.

monospace

Text in this font denotes text or characters that you enter from the keyboard, sections of code, programming examples, and syntax examples. This font also is used for the proper names of disk drives, paths, directories, programs, device names, filenames and extensions, and code excerpts.

---

# Introduction to Measurement Studio Measurement Computing Edition

Measurement Studio Measurement Computing Edition is an integrated suite of tools and class libraries that is designed for developers using Microsoft Visual Basic .NET and Visual C# to develop measurement and automation applications.

Measurement Studio Measurement Computing Edition dramatically reduces application development time through object-oriented measurement hardware interfaces, advanced analysis libraries, scientific user interface controls for Windows and Web applications, measurement data networking, wizards, interactive code designers, and highly extensible .NET classes. You can use Measurement Studio Measurement Computing Edition to develop a complete measurement and automation application that includes data acquisition, analysis, and presentation functionalities.

The Measurement Studio Measurement Computing Edition package includes two CDs—one CD with support for Visual Studio .NET 2003, Visual Studio 2005, and Visual Studio 2008 and the other with MCC device drivers.

This manual documents Measurement Studio for Visual Studio 2005 and Visual Studio 2008. For help with Visual Studio .NET 2003 support, refer to the Measurement Studio Support for Visual Studio .NET 2003 Readme. After installing Visual Studio .NET 2003 support, you can refer to the Measurement Studio User Manual by selecting **Start»All Programs»National Instruments»<Measurement Studio for .NET 2003>> User Manual**.



**Note** Refer to the *Measurement Studio Measurement Computing Edition Release Notes* for updates or changes to the *Measurement Studio Measurement Computing Edition User Manual*.

# Installation Requirements

---

To use Measurement Studio, your computer must have the following:

- Microsoft Windows Vista/XP/2000 for Visual Studio 2005 or Microsoft Windows Vista/XP for Visual Studio 2008



**Note** If you have Windows Vista installed you must also have both Visual Studio 2005 Service Pack 1 and Visual Studio Service Pack 1 Update for Windows Vista installed on your machine for Measurement Studio to function properly.

- Microsoft .NET Framework 2.0 for Visual Studio 2005 or Microsoft .NET Framework 3.5 for Visual Studio 2008 (required only for the Measurement Studio .NET class libraries)
- Standard, Professional, or Team System edition of Microsoft Visual Studio 2005 or Standard, Professional, or Team System edition of Microsoft Visual Studio 2008 (required to use the Measurement Studio integrated tools) or Visual C# or Visual Basic .NET Express editions of Microsoft Visual Studio 2005 or Microsoft Visual Studio 2008
- Intel Pentium III class processor, 1 GHz or higher
- Video display—1024 × 768, 256 colors (16-bit color recommended for user interface controls)
- Minimum of 256 MB of RAM (512 MB or higher recommended)
- Minimum of 250 MB of free hard disk space for Visual Studio 2005 support or minimum of 200 MB of free hard disk space for Visual Studio 2008 support
- Microsoft-compatible mouse
- Microsoft Internet Explorer 6.0 or later

**Optional Installation**—In order for links from Measurement Studio help topics to .NET Framework help topics to work, you must install the Microsoft .NET Framework SDK 2.0 or Microsoft .NET Framework SDK 3.5.

## Deployment Requirements

To deploy an application built with Measurement Studio .NET class libraries, the target computer must have a Windows Vista/XP/2000 operating system and the .NET Framework version 2.0 for Visual Studio 2005 or the .NET Framework version 3.5 for Visual Studio 2008.

# Installation Instructions

---

Complete the following steps to install Measurement Studio. These steps describe a typical installation. Please carefully review all additional licensing and warning dialog boxes.

National Instruments recommends that you exit all programs before running the Measurement Studio installer. Applications that run in the background, such as virus scanning utilities, might cause the installer to take longer than average to complete.



**Note** There are separate installers for Measurement Studio support for Visual Studio 2005 and Measurement Studio support for Visual Studio 2008. Repeat the installation instructions to install support for both. To install the Measurement Computing drivers, insert the Measurement Computing Driver CD into the CD drive after the Measurement Studio installation is complete for all Measurement Studio Visual Studio support installers that you run. Skip this step if you do not have a driver CD.

The option to browse for an installation location is valid only if you have not already installed any Measurement Studio features for the version of Visual Studio or the .NET Framework that you are installing. If you have any Measurement Studio features installed, then Measurement Studio installs to the same root directory to which you installed other Measurement Studio features.

Complete the following steps to install Measurement Studio:

1. Log on as an administrator or as a user with administrator privileges.
2. Launch `Autorun.exe` from the installation CD.
3. Select the version of Visual Studio you want to install support for.
4. Follow the instructions that appear on the screen.



**Note** If you want to upgrade a Windows XP machine to Windows Vista, National Instruments recommends first uninstalling all NI software, including both application software and drivers.

## Installing the Current Version of Measurement Studio over Previous Versions of Measurement Studio



**Note** You can have only one version of Measurement Studio installed on a system for each version of Visual Studio or the .NET Framework installed on the system. For example, you can have Measurement Studio 8.1.2 for Visual Studio 2005 installed on the same system as Measurement Studio 8.5 for Visual Studio 2008, but you cannot have Measurement Studio 8.1.2 for Visual Studio 2005 installed on the same system as Measurement Studio 8.5 for Visual Studio 2005.

If you install a newer version of Measurement Studio on a machine that has a prior version of Measurement Studio installed, the newer version installer replaces the prior version functionality, including class libraries. However, the prior version assemblies remain in the global assembly cache (GAC); therefore, applications that reference the prior version continue to use the prior version .NET assemblies.



**Note** This does not apply to `NationalInstruments.Common.dll`. `NationalInstruments.Common.dll` uses a publisher policy file to redirect applications to always use the newest version of `NationalInstruments.Common.dll` installed on the system, for each version of the .NET Framework. `NationalInstruments.Common.dll` is backward-compatible.

## Measurement Studio Features

---

The following list contains features included in Measurement Studio. Refer to [mccdaq.com/mstudio](http://mccdaq.com/mstudio) for more information about the features and functionality included in Measurement Studio.

- Windows Forms user interface controls
- Web Forms user interface controls
- Analysis class library
- Universal Library class library
- MccDaq Scan Components class library
- MCC-488.2 class library

# Learning Measurement Studio

---

As you work with Measurement Studio, you might need to consult additional resources. For detailed Measurement Studio help, including function reference and in-depth documentation on developing with Measurement Studio, refer to the *NI Measurement Studio Help* within the Visual Studio environment. The *NI Measurement Studio Help* is fully integrated with the Visual Studio help. You must have Visual Studio installed to view the online help, and you must have the the Microsoft .NET Framework SDK 2.0 for Visual Studio 2005 or the Microsoft .NET Framework SDK 3.5 for Visual Studio 2008 installed in order for links from Measurement Studio help topics to .NET Framework help topics to work. You can launch the *NI Measurement Studio Help* in the following ways:

- From the Windows Start menu, select **Start»All Programs»National Instruments»<Measurement Studio>»Measurement Studio Documentation**. The help launches in a stand-alone help viewer.
- From Visual Studio, select **Help»Contents** to view the Visual Studio table of contents. The *NI Measurement Studio Help* is listed in the table of contents.
- From Visual Studio, select **Measurement Studio»NI Measurement Studio Help**. The help launches within the application.



**Tip** As you work through this manual, you will see italicized references to relevant help topics. To find these topics, use the table of contents in the *NI Measurement Studio Help* installed on your machine.

The following resources also are available to provide you with information about Measurement Studio.

- Getting Started information—Refer to the *Measurement Studio Core Overview* topic and the *Getting Started with the Measurement Studio Class Libraries* section in the *NI Measurement Studio Help* for an introduction to Measurement Studio and for walkthroughs that guide you step-by-step in learning how to develop Measurement Studio applications. For an introduction to Measurement Studio resources, refer to the *Using the Measurement Studio Help* topic in the *NI Measurement Studio Help*.
- Examples—Measurement Studio installs examples organized by class library, depending on the component, the version of Visual Studio or the .NET Framework that the example supports, the version of

Measurement Studio installed on the system, and the operating system. For more information on example locations, refer to *Where To Find Examples*.

- Measurement Computing Technical Support—Refer to Appendix A, *Contacting Measurement Computing Corporation*, in the *Measurement Studio Measurement Computing Edition User Manual* for more information. You can find the User Manual at **Start»All Programs»National Instruments»<Measurement Studio>» Measurement Studio Documentation»User Manual**.
- Measurement Studio Measurement Computing Edition Web site, [mccdaq.com/mstudio](http://mccdaq.com/mstudio)—Contains Measurement Studio news, support, and downloads.
- NI Developer Zone, [zone.ni.com](http://zone.ni.com)—Provides access to online example programs, tutorials, technical news, and a Measurement Studio Discussion Forum where you can participate in discussion forums for .NET Languages.
- *Measurement Studio .NET Class Hierarchy Chart*—Provides overviews of class relationships within class libraries.
- Review the information from the Microsoft Web site on using Visual Studio.

---

# Measurement Studio

## Measurement Computing

### Edition .NET Class Libraries

This chapter provides overview information about the .NET class libraries included with Measurement Studio Measurement Computing Edition support for Visual Studio 2005 and Visual Studio 2008. Refer to the *Using the Measurement Studio .NET Class Libraries* section of the *NI Measurement Studio Help* for detailed information about these libraries. Refer to Chapter 4, *Getting Started with Measurement Studio*, for step-by-step instructions on developing applications with these libraries.

## Measurement Studio Support for Visual Studio .NET Class Library Overview

---

Measurement Studio provides .NET class libraries that you can use to develop complete measurement and automation applications in Visual Basic .NET and Visual C#.

Measurement Studio includes the following .NET class libraries:

- Analysis
- Common
- Network Variable
- MCC-488.2
- Universal Library
- MccDaq Scan Components Library
- User Interface

Refer to the following sections for information about each Measurement Studio .NET class library.

# Analysis

---

The Measurement Studio Analysis .NET class library is in the `NationalInstruments.Analysis` namespace. The Analysis class library includes a set of classes that provides various digital signal processing, signal filtering, signal generation, peak detection, and other general mathematical functionality. Use this library to analyze acquired data or to generate data. Additionally, the documentation for the Analysis class library includes analysis code snippets that you can copy and paste into an application and use immediately.

The Analysis class library includes the following functionality:

- Sawtooth, sine, square, triangle, and basic function wave generators
- Bessel, Chebyshev, Inverse Chebyshev, Windowed, Kaiser, and Elliptic Low, High, Bandpass, and Bandstop filters
- Signal processing functions such as convolution, deconvolution, correlation, decimation, integration, differentiation, and unwrap phase
- FFT, Inverse FFT, Real FFT, Fast Hartley, Inverse Fast Hartley, Fast Hilbert, Inverse Fast Hilbert, DST, Inverse DST, DCT, and Inverse DCT transformations
- Linear algebra functions such as determinant, check positive definiteness, calculate dot product, and other various matrix functions
- Scaled and unscaled windowing classes
- Common statistical functions such as mean, median, mode, and variance
- Exponential, linear, and polynomial curve fitting functions
- Signal generation functions

Refer to the following lists to determine the type of measurements available in the Analysis .NET libraries.

## Measurements

- Impulse Response Function
- Network Functions (avg)

## Signal Generation

- Arbitrary Wave
- Gaussian White Noise

- Sine Pattern
- Sine Wave
- Square Wave
- Triangle Wave
- Uniform White Noise

## Windowing

- Blackman Window
- Blackman-Harris Window
- Blackman-Nuttall Window
- Cosine Tapered Window
- Dolph-Chebyshev Window
- Exact Blackman Window
- Exponential Window
- Flat Top Window
- Force Window
- Gauss Window
- General Cosine Window
- Hamming Window
- Hanning Window
- Kaiser-Bessel Window
- Scaled Time Domain Windows
- Symmetric Time Domain Windows
- Triangle Window

## Filters

- Bessel
- Butterworth
- Cascade
- Chebyshev
- Elliptic
- FIR
- FIR Windowed

- IIR
- IIR Cascade
- Inverse Chebyshev
- Kaiser

## Signal Processing

- Autocorrelation
- Convolution
- Cross Power
- Cross Correlation
- Decimate
- Deconvolution
- Derivative  $x(t)$
- Discrete Cosine Transform
- Discrete Sine Transform
- Fast Hartley Transform
- Fast Hilbert Transform
- Integral  $x(t)$
- Inverse Real and Complex Fast Fourier Transform (FFT)
- Inverse Fast Hartley Transform
- Inverse Fast Hilbert Transform
- Peak Detection
- Power Spectrum
- Pulse Parameters
- Real and Complex FFT
- Threshold Peak Detector
- Unwrap Phase

## Linear Algebra

- Complex Determinant
- Complex Dot Product
- Complex Matrix Condition Number
- Complex Matrix Norm

- Complex Matrix Rank
- Complex Outer Product
- Complex Pseudo Inverse Matrix
- Determinant
- Dot Product
- Inverse Matrix
- Matrix Condition Number
- Matrix Multiplication
- Matrix Norm
- Matrix Rank
- Outer Product
- Pseudo Inverse Matrix
- Special Matrix
- Test Positive Definite Matrix
- Trace
- Transpose

## **Array and Numeric Operations**

- 1D and 2D Array Arithmetic
- 1D and 2D Linear Evaluation
- 1D and 2D Polynomial Evaluation
- 1D Polar to Rectangular
- 1D Rectangular to Polar
- Complex Number Arithmetic
- Find Polynomial Roots
- Scale 1D and 2D

## **Curve Fitting**

- Exponential Fit
- General Polynomial Fit
- Linear Fit

## Statistics

- Histogram
- Mean
- Median and Mode
- Moment about Mean
- Root-Mean-Square (RMS)
- Standard Deviation



**Tip** For more information about analyzing or generating data with the Analysis class library, refer to the *Using the Measurement Studio Analysis .NET Library* topic in the *NI Measurement Studio Help*. For more information about the functionality included in the Analysis class library, visit [ni.com/analysis](http://ni.com/analysis) and select **Visual Basic, Visual Basic .NET, C++, and C# with Measurement Studio**.

## Common

---

The Measurement Studio Common .NET class library is in the `NationalInstruments` namespace. The Common class library provides a set of classes that facilitates the exchange of data between the acquisition, analysis, and user interface portions of your application. The Common class library includes the following features:

- A `ComplexDouble` data type. This data type represents a complex number of type `Double` that is composed of a real part and an imaginary part.
- A `DigitalWaveform` data type. This data type represents a set of digital states that are grouped by samples or signals.
- A `ComplexWaveform` data type. This data type represents an analog signal that varies over time and is composed of complex data values.
- An `AnalogWaveform` data type. This data type represents an analog signal that varies over time.
- A `DataConverter` class that converts data from one data type to another data type, such as converting an array of integers to an array of doubles.
- An `EngineeringFormatInfo` class that defines a custom formatter to format numeric values as strings with engineering notation and International System of Units (SI) prefixes and symbols.

- A `PrecisionWaveformTiming` class that you can use to represent the timing of an analog or digital waveform that is accurate to the nearest  $2^{-64}$  second.
- An `AnalogWaveformCollection` class that contains a strongly typed collection of `AnalogWaveform<TData>` objects; one object for each channel and record combination. You can access these objects through the 1D indexer or the 2D indexer.



**Tip** For more detailed information about the Common class library, refer to the *National Instruments* section in the *NI Measurement Studio Help*.

## Network Variable

---

The Measurement Studio Network Variable .NET class library includes three namespaces: `NationalInstruments.NetworkVariable`, `NationalInstruments.NetworkVariable.WindowsForms`, and `NationalInstruments.NetworkVariable.WebForms`. You use the Network Variable class library to transfer live measurement data between applications and servers over the network. You use **WindowsForms** and **WebForms** data sources to expose Network Variable data items that you can bind to properties of a Windows Forms or a Web Forms control.

Use the features in the Network Variable class library to perform the following operations:

- Exchange different types of data between Measurement Studio, LabVIEW, LabWindows™/CVI™, and other applications that support NI-Publish Subscribe Protocol (psp:) and OLE for Process Control (opc:) servers. Exchanging data between Measurement Studio applications and OPC servers requires LabVIEW DSC.



**Note** Measurement Studio and LabWindows/CVI refer to variables as network variables and LabVIEW refers to variables as shared variables. However, you can read to and write from Measurement Studio and LabWindows/CVI network variables with LabVIEW shared variables.

- Use Windows Forms and Web Forms data sources to expose Network Variable data items that you can bind to properties of a Windows Forms or a Web Forms control.
- Use the `Browser` classes to discover network variables and processes.

- Use the `ServerProcess`, `ServerProcessInfo`, `ServerVariable`, and `ServerVariableInfo` classes to explicitly create network variables.
- Use the Network Variable Browser dialog box to quickly locate and select data items on other computers and servers. The Browser Dialog is included in the **WindowsForms** class.



**Tip** For more detailed information about the Network Variable class library, refer to the *Using the Measurement Studio Network Variable .NET Library* section in the *NI Measurement Studio Help*.

## MCC-488.2

---

The Measurement Studio MCC-488.2 .NET class library is in the `MccDaq.Mcc4882` namespace. This class library is included when you install the MCC-488.2 driver. The MCC-488.2 class library includes a set of classes for communicating with GPIB instruments, controlling GPIB devices, and acquiring GPIB status information. Use this library to design code that communicates with and controls instruments on a GPIB interface. Use the MCC-488.2 class library to configure and communicate with GPIB devices using the `Device` and `Board` classes.

## Universal Library

---

The Measurement Studio Universal Library .NET class library is in the `MccDaq` namespace. This class library is included when you install the Universal Library driver. Use the Universal Library class library to communicate with and control Measurement Computing data acquisition (DAQ) devices.

Use the Universal Library class library to perform the following types of tasks:

- Analog signal measurement
- Analog signal generation
- Digital I/O
- Counting and timing
- Temperature measurement

# MccDaq Scan Components

The Measurement Studio Scan Components .NET class library is in the `MccDaq.ScanComponents` namespace. The MccDaq Scan Components library includes a set of components for reading and writing multiple channels of analog data.

Use the MccDaq Scan Components library to perform the following types of tasks:

- Analog input scans
- Analog output scans

## User Interface

The Measurement Studio user interface controls are in the Windows Forms and Web Forms .NET class libraries. The following sections list the functionality included with the Measurement Studio Windows Forms and Web Forms controls.

Refer to Table 2-1 for the UI controls provided by Measurement Studio.

**Table 2-1.** Measurement Studio UI Controls

User Interface Controls	Windows Forms	Web Forms
Waveform graph	✓	✓
Scatter graph	✓	✓
Digital waveform graph	✓	✓
Complex graph	✓	✓
Legend	✓	✓
Knob	✓	✓
Gauge	✓	✓
Meter	✓	✓
Slide	✓	✓
Thermometer	✓	✓
Tank	✓	✓
Numeric edit	✓	✓

**Table 2-1.** Measurement Studio (Continued)UI Controls (Continued)

User Interface Controls	Windows Forms	Web Forms
Switch	✓	✓
LED	✓	✓
Property editor	✓	
Array controls	✓	
AutoRefresh control		✓
InstrumentControlStrip control	✓	

## Windows Forms Controls

---

The Windows Forms .NET class library is in the `NationalInstruments.UI.WindowsForms` namespace. The Windows Forms class library encapsulates the following Measurement Studio user interface controls:

- Waveform graph
- Scatter graph
- Digital waveform graph
- Complex graph
- Legend
- Knob
- Gauge
- Meter
- Slide
- Thermometer
- Tank
- Numeric edit
- Switch
- LED
- Property editor
- Array controls

Use this class library to add measurement-specific user interface controls to your application. You can configure the controls programmatically at

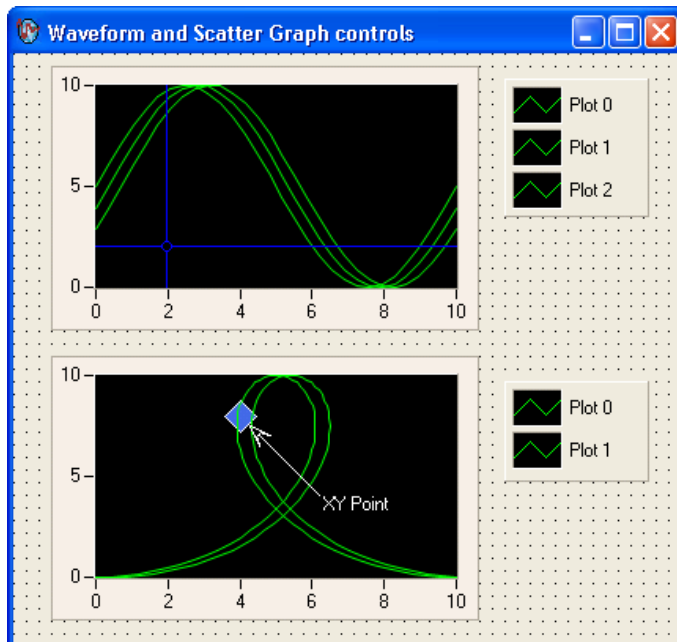
design time, through the Properties window in the Windows Forms Designer, or at run time with the property editor control. The following sections describe each of the Measurement Studio Windows Forms user interface controls.



**Tip** For more information about using the .NET user interface controls, refer to the *Using the Measurement Studio Windows Forms .NET Controls* section in the *NI Measurement Studio Help*.

## Waveform Graph and Scatter Graph Controls

Use the Measurement Studio waveform graph and scatter graph controls, as shown in Figure 2-1, to display two-dimensional data on a Windows Forms user interface. Use the waveform graph to display two-dimensional linear data. You explicitly specify each value in one dimension and provide an initial value and interval to implicitly specify the values in the other dimension. Use the scatter graph to display two-dimensional linear or nonlinear data: you explicitly specify each value in both dimensions.



**Figure 2-1.** Waveform Graph Windows Forms Control with Cursors and Scatter Graph Windows Forms Control with XY Point Annotation; Both Graphs Have Corresponding Legends

With the waveform graph and scatter graph controls and the classes that interface with the controls, you can perform the following operations:

## Plot Operations

- Plot and chart arrays of double-precision floating point values, analog waveforms, and complex waveforms.
- Configure a graph to contain multiple plots to show separate but related data on the same graph.
- Draw lines or fills from a plot to an X value, Y value, or another plot.
- Specify plots in the scatter graph control as X and Y data. Specify plots in the waveform graph control as X or Y data and optionally with date and time scaling.
- Use the extensible plot and plot area drawing capabilities and events to customize the graph appearance.
- Use plot data tooltips to display X and Y coordinates when a user hovers the mouse over a data point.
- Create custom point and line styles for plots.
- Specify anti-aliased plots for plot lines.
- Calculate and display error bands.

## Axis Operations

- Configure a graph to include multiple axes or independent ranges so that plot data fits the graph plot area.
- Configure the axis modes to: fixed; autoscaling, including autoscaling based on the visible data only; strip chart; or scope chart.
- Use logarithmic axes with configurable bases.
- Interactively change the range of an axis and invert the axis at run time by clicking on the axis end labels.
- Display origin lines.
- Display captions on the axis.
- Display grid lines.
- Position the axis to display on one or both sides of the graph's plot area.
- Configure major, minor, and custom divisions and origin lines.

## Cursor Operations

- Use cursors to identify key points in plots and the plot area.
- Configure cursor snap modes to be fixed, floating, nearest point, or to plot.
- Use cursor labels to display X and Y data coordinates in a customized format that the cursor crosshair points to, and customize the text font and colors of the label.
- Create custom point and line styles for cursors.
- Interactively move the cursor by clicking and dragging the vertical or horizontal crosshair or the center of the cursor.
- Programmatically move the cursor to previous or next position or to a specified coordinate.

## Annotation Operations

- Configure text labels, arrows, and drawing shapes to annotate a point anywhere in the plot area of the graph.
- Configure range area, text labels, and arrows to annotate a range in the plot area of the graph.
- Show tooltips configured to display data or other custom text.

## Additional Operations

- Pan and zoom interactively, as well as programmatically.
- Copy the graph as a BMP, GIF, JPEG, or PNG image to the clipboard or a file.
- Perform hit testing of mouse cursor coordinates.
- Bind a plot to a data source on the waveform graph.



**Tip** For more information about using the waveform and scatter graph controls, refer to the *Using the Measurement Studio Windows Forms Scatter and Waveform Graph .NET Controls* section in the *NI Measurement Studio Help*.

## Digital Waveform Graph Control

Use the Measurement Studio digital waveform graph control, as shown in Figure 2-2, to display `DigitalWaveform` data on a Windows Forms user interface.

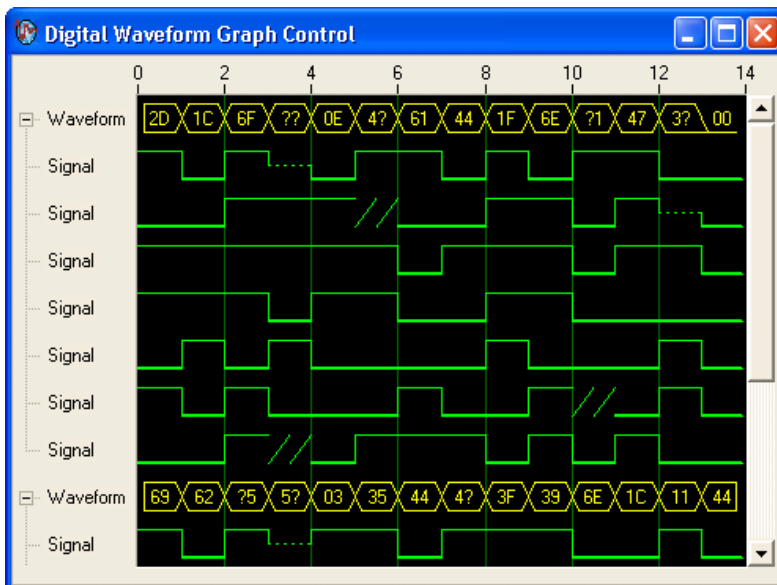


Figure 2-2. Digital Graph Windows Forms Control

With the digital waveform graph control and the classes that interface with the control, you can perform the following operations:

### Plot Operations

- Plot digital waveform data. Data values can represent up to eight different digital states.
- Configure plot labels on the y-axis.
- Configure plot templates to customize plots that are implicitly created from plotted data.
- Specify anti-aliased digital plots.
- Expand and collapse signal plots interactively or programmatically.
- Display tooltips.

## Waveform Sample and Signal State Operations

- Simultaneously display waveforms and signals or display signals only.
- Create custom waveform sample and signal state styles.
- Configure the appearance of sample and state labels.
- Create custom waveform sample and signal state labels.

## Axis Operations

- Configure the axis modes to fixed, exact autoscaling, or loose autoscaling.
- Interactively change the range of an axis and invert the axis at run time by clicking on the axis end labels.
- Display captions on the axis.
- Display grid lines.
- Position the axis to display on one or both sides of the graph's plot area.
- Configure major, minor, and custom divisions.

## Additional Operations

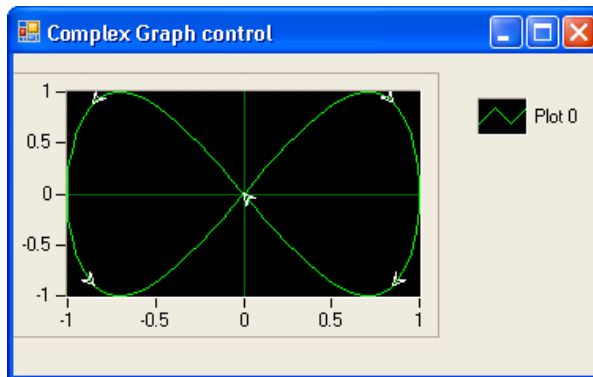
- Display data in sample or time mode.
- Perform hit testing of mouse cursor coordinates.
- Pan with scroll bars.
- Configure the style and mode of scroll bars.
- Create custom scroll bars.
- Pan and zoom interactively and programmatically.
- Copy the graph as a BMP, GIF, JPEG, or PNG image to the clipboard or a file.



**Tip** For more information about using the digital waveform graph control, refer to the *Using the Measurement Studio Windows Forms Digital Waveform Graph .NET Control* section in the *NI Measurement Studio Help*.

## Complex Graph Control

Use the Measurement Studio complex graph control, as shown in Figure 2-3, to display `ComplexDouble` data on a Windows Forms user interface. A `ComplexDouble` consists of a real part and an imaginary part. You can use a waveform graph to plot complex waveform data.



**Figure 2-3.** Complex Graph Windows Forms Control

With the complex graph control and the classes that interface with the control, you can perform the following operations:

### Plot Operations

- Plot and chart `ComplexDouble` data.
- Configure a graph to contain multiple plots to show separate but related data on the same graph.
- Draw lines or fills from a plot to an X value, Y value, or another plot.
- Use the extensible plot and plot area drawing capabilities and events to customize the graph appearance.
- Configure the plot to display arrows. The arrows indicate the direction of the complex data.
- Create custom point and line styles for plots.
- Specify anti-aliased plots for plot lines.
- Calculate and display error bands.
- Display tooltips.

## Axis Operations

- Configure a graph to include multiple axes or independent ranges so that plot data fits the graph plot area.
- Configure the axis modes to: fixed; autoscaling, including autoscaling based on the visible data only; strip chart; or scope chart.
- Interactively change the range of an axis and invert the axis at run time by clicking on the axis end labels.
- Display origin lines and grid lines.
- Configure major, minor, and custom divisions and origin lines.
- Position the axis to display on one or both sides of the graph's plot area.
- Display captions on the axis.

## Cursor Operations

- Use cursors to identify key points in plots and the plot area.
- Configure cursor snap modes to be fixed, floating, nearest point, or to plot.
- Use cursor labels to display X and Y data coordinates that the cursor crosshair points to, and customize the text font and colors of the label.
- Create custom point and line styles for cursors.
- Configure the graph to display cursors that are used to determine the real, imaginary, magnitude, and phase data coordinates of a point on the plot area.

## Annotation Operations

- Configure text labels, arrows, and drawing shapes to annotate a point anywhere in the plot area of the graph.
- Configure range area, text labels, and arrows to annotate a range in the plot area of the graph.
- Annotate points and ranges of real, imaginary, and magnitude values.
- Annotate and label a range of magnitude values for a particular phase.

## Additional Operations

- Pan and zoom interactively.
- Copy the graph as a BMP, GIF, JPEG, or PNG image to the clipboard or a file.



**Tip** For more information about using the complex graph control, refer to the *Using the Measurement Studio Windows Forms Complex Graph .NET Control* section in the *NI Measurement Studio Help*.

## Legend Control

Use the Measurement Studio legend control, as shown in Figure 2-1, to display symbols and descriptions for a specific set of elements of another object, such as the plots or cursors of a graph. When you associate the legend control with another object, any changes you make to that object are automatically reflected in the legend. For example, if you associate the legend control with the plots of a graph, any changes you make in the plots collection editor are automatically reflected in the legend.



**Tip** For more information about using the legend control, refer to the *Using the Measurement Studio Windows Forms Legend .NET Control* section in the *NI Measurement Studio Help*.

## Numeric Controls

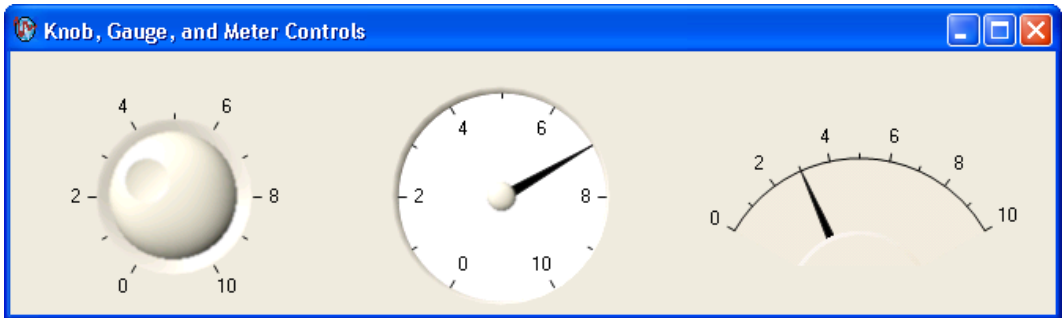
Use the Measurement Studio numeric controls to display numerical information, on a Windows Forms user interface, with the look of scientific instruments. The numeric controls include a knob, gauge, meter, slide, thermometer, and tank. The following sections describe operations available with the controls and the classes that interface with them.

With all of the numeric controls and the classes that interface with them, you can perform the following operations:

- Configure the scale to be linear or logarithmic and toggle the visibility of the scale.
- Fill the scale and configure the range, color, dimensions, and style of the fill.
- Connect to the Measurement Studio .NET numeric edit control so that if you change the value of one control, it changes the value of the other control.
- Customize the appearance of the control using 3D lab styles or classic 2D styles and change the color and length of ticks and labels.
- Configure the format of value labels to engineering or date/time.
- Display tooltips reflecting the current value of the pointer.
- Interactively change the value of the control by clicking or dragging and moving the pointer with the mouse.

- Interactively change the range of an axis and invert the axis at run time by clicking on the axis end labels.
- Programmatically move the pointer to previous or next value.
- Perform hit testing of mouse cursor coordinates.
- Specify the image format of the control as BMP, GIF, JPEG, or PNG.

Use the Measurement Studio knob, gauge, and meter controls, as shown in Figure 2-4, to input and display numeric data on your user interface.

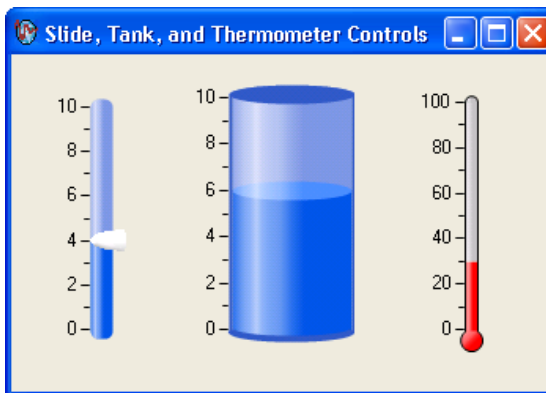


**Figure 2-4.** Knob, Gauge, and Meter Windows Forms Controls

With the knob, gauge, and meter controls and the classes that interface with the controls, you can perform the following operations:

- Specify the start and sweep angle of the arc programmatically or from the Properties window.
- Use automatic division spacing, custom divisions, and invert the scale.

Use the Measurement Studio slide, tank, and thermometer controls, as shown in Figure 2-5, to input and display numeric data on your interface.



**Figure 2-5.** .NET Slide, Tank, and Thermometer Controls

With the slide, tank, and thermometer controls and the classes that interface with them, you can perform the following operations:

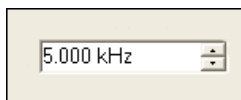
- Fill to the minimum or maximum value of the scale.
- Position the scale horizontally with left, right, or both and position the scale vertically with top, bottom, or both.



**Tip** For more information about using the Windows Forms knob, gauge, meter, slide, tank, or thermometer controls, refer to the *Knob*, *Gauge*, *Meter*, *Slide*, *Tank*, or *Thermometer Class* sections in the *NI Measurement Studio Help*.

## Numeric Edit Control

Use the Measurement Studio numeric edit control, as shown in Figure 2-6, to display numeric values and to provide a way by which end users can edit numeric values. Typically, you use a numeric edit control to input or display double numerical data instead of using a Windows Forms `TextBox` or `NumericUpDown` control.



**Figure 2-6.** Numeric Edit Windows Forms Control

With the numeric edit control and the classes that interface with the control you can perform the following operations:

- Use up and down buttons for easy incrementing and decrementing.
- Perform range checking.
- Set the minimum range value to negative infinity and the maximum range value to positive infinity.
- Create custom formats or use built-in numeric formats including generic, engineering, and simple double.
- Connect to a Measurement Studio numeric control so that if you change the value of one control, it changes the value of the other control.
- Set the coercion mode property to discrete or continuous values. This property configures the control to allow entry or display of either a discrete set of values or any value.
- Set the interaction mode to keyboard and mouse, keyboard only, mouse only, or none.



**Tip** For more information about using the Windows Forms numeric edit control, refer to the *NumericEdit Class* section in the *NI Measurement Studio Help*.

## Switch and LED Controls

Use the Measurement Studio switch and LED controls as Boolean controls on a Windows Forms user interface. You typically use a switch control, as shown in Figure 2-7, to receive and control Boolean input on an application user interface.



**Figure 2-7.** Switch Windows Forms Control in Vertical Toggle 3D Style

You typically use an LED control, as shown in Figure 2-8, to indicate a Boolean value on an application user interface.



**Figure 2-8.** LED Windows Forms Control in Square 3D Style

With the switch and LED controls and the classes that interface with the controls, you can perform the following operations:

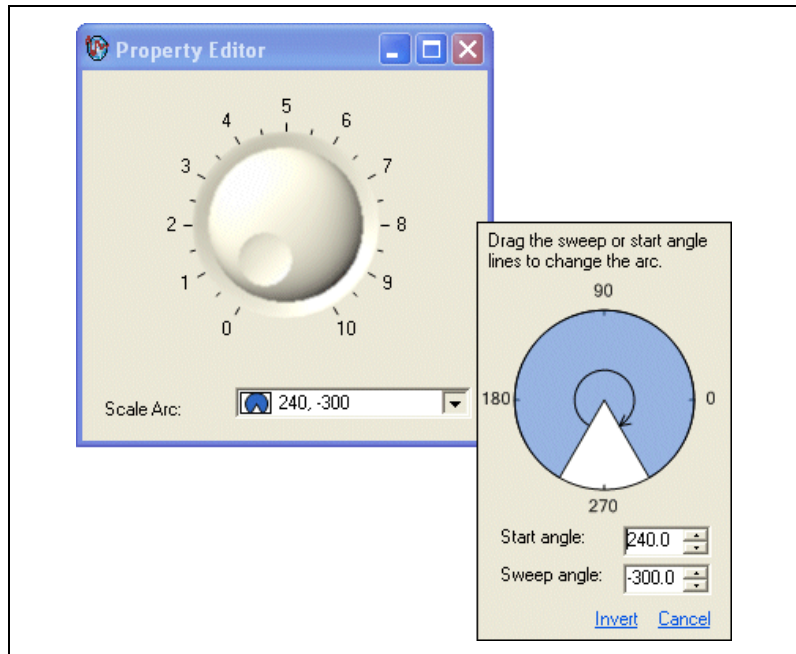
- Receive notification before or after the state of the control changes.
- Configure how the control behaves when you click it with the mouse or press the spacebar when the control has focus.
- Configure the appearance of the control.
- Make the control background transparent.
- Configure the LED control to blink while it is on or off and configure the rate at which the LED control blinks.



**Tip** For more information about using the switch and LED controls, refer to the *Using the Measurement Studio Windows Forms Switch and LED .NET Controls* section in the *NI Measurement Studio Help*.

## Property Editor Control

Use the Measurement Studio property editor control, as shown in Figure 2-9, to configure properties for Windows Forms controls at run time.



**Figure 2-9.** Property Editor Windows Forms Control for the Knob Control Scale Arc Property

With the property editor control and the classes that interface with the control, you can perform the following operations:

- Edit any .NET type at run time, including collections.
- Edit expandable properties that represent nested properties of another object, such as major divisions of an axis.
- Display custom editors and type converters for properties.
- Connect to a Windows Forms control so that if you change the value of a property of the control, the Property Editor will update to reflect the change.
- Configure the display mode as a visual representation of the value, text-only, or both.
- Set the interaction mode to edit values or indicator.



**Tip** For more information about using the property editor control, refer to the *Using the Measurement Studio Property Editor Control* topic in the *NI Measurement Studio Help*.

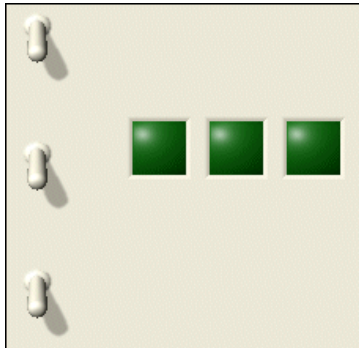
## Windows Forms Array Controls

---

You can create an array of Measurement Studio controls that behave as a single unit. For example, you can use these array controls to visualize and control ports of a digital line or values of an array. Measurement Studio includes switch, LED, and numeric edit array controls. You can create control arrays of other controls if those controls meet the constraints of the generic type parameter `TControl`.

### Switch and LED Array Controls

Use the Measurement Studio switch and LED array controls as an array of Boolean controls on a Windows Forms user interface. You typically use a switch array control, as shown in Figure 2-10, to control ports of a digital line or values of an array. You typically use an LED array control, as shown in Figure 2-10, to visualize ports of a digital line or values of an array.



**Figure 2-10.** Switch and LED Array Controls

With the switch and LED array controls and the classes that interface with the controls, you can perform the following operations:

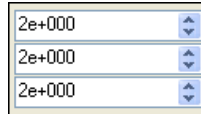
- Set values by passing an array of data.
- Modify the number of controls displayed based on the length of the specified values.
- Receive notification before or after the state of the control changes.
- Configure how the control behaves when you click it with the mouse or press the spacebar when the control has focus.
- Configure the appearance of the control.
- Make the control background transparent.
- Configure the LED controls to blink while they are on or off and configure the rate at which the LED controls blink.
- Configure the layout of the control to be horizontal or vertical.
- Bind the value of the control to a data source.
- Mark an array of Boolean controls so that only one can be true at a time.



**Tip** For more information about using the switch and LED array controls, refer to the *Using the Measurement Studio Control Array .NET Controls* topic in the *NI Measurement Studio Help*.

## Numeric Edit Array Control

Use the Measurement Studio numeric edit array control, as shown in Figure 2-11 to control and visualize values of an array of `double` values. With the numeric edit array control and the classes that interface with the control you can perform the following operations:



**Figure 2-11.** Numeric Edit Array control

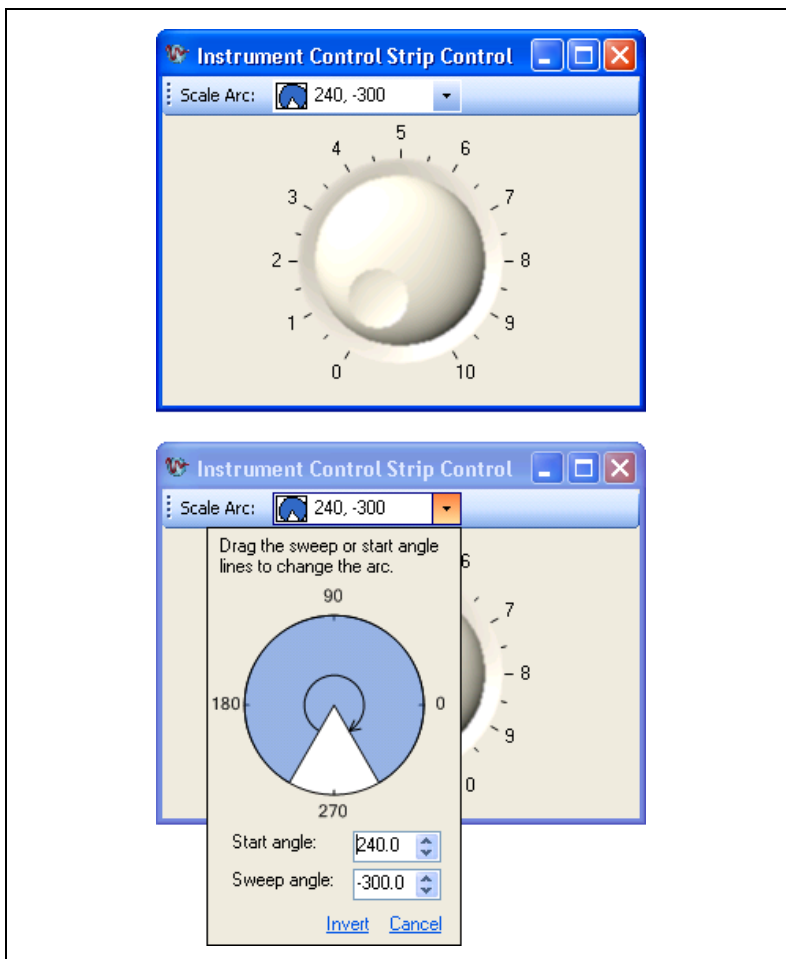
- Set values by passing an array of data.
- Modify the number of controls displayed based on the length of the array of values you specify.
- Use up and down buttons for easy incrementing and decrementing.
- Perform range checking.
- Set the minimum range value to negative infinity and the maximum range value to positive infinity.
- Create custom formats or use built-in numeric formats including generic, engineering, and simple double.
- Connect to a numeric control so that if you change the value of one control, it changes the value of the other control.
- Set the coercion mode property to discrete or continuous values. This property configures the control to allow entry or display of either a discrete set of values or any value.
- Set the interaction mode to keyboard and mouse, keyboard only, mouse only, or none.
- Use the edit box to select text programmatically and to validate text values.
- Configure the layout of the control to be horizontal or vertical.
- Bind the value of the control to a data source.



**Tip** For more information about using the numeric edit array control, refer to the *Using the Measurement Studio Control Array .NET Controls* topic in the *NI Measurement Studio Help*.

## InstrumentControlStrip Control

You can use the InstrumentControlStrip control as a toolbar for editing property values of another control through the associated editors at run time. For example, you can populate the InstrumentControlStrip with ToolStripPropertyEditor items that edit property values of a waveform graph through the associated editors at run time. The editor displayed by the ToolStripPropertyEditor is the same editor that displays when you edit the property at design time.



**Figure 2-12.** InstrumentControlStrip Control



**Tip** For more information about the `InstrumentControlStrip` control, refer to *Using the Measurement Studio Windows Forms Instrument Control Strip .NET Control* topic in the *NI Measurement Studio Help*.

## ASP.NET Web Forms Controls

---

The Measurement Studio ASP.NET user interface controls are in the Web Forms .NET class library. The Web Forms .NET class library is in the `NationalInstruments.UI.WebForms` namespace. The Web Forms class library encapsulates the following Measurement Studio user interface controls:

- Waveform graph
- Scatter graph
- Digital waveform graph
- Complex graph
- Legend
- Knob
- Gauge
- Meter
- Slide
- Thermometer
- Tank
- Numeric edit
- Switch
- LED
- AutoRefresh

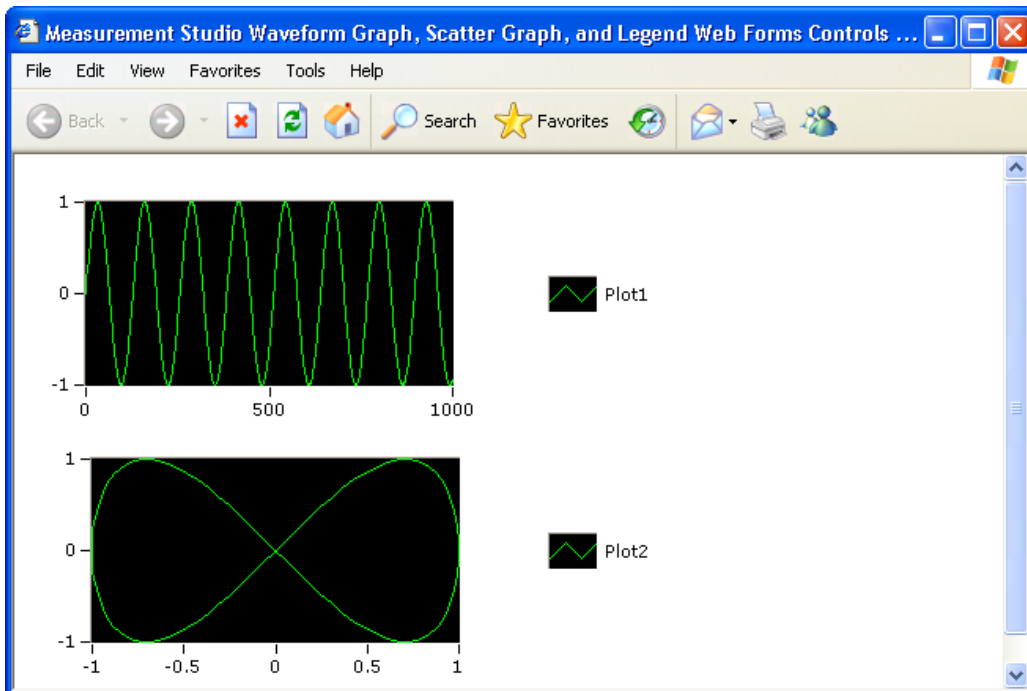


**Note** All Measurement Studio ASP.NET Web Forms controls for Visual Studio 2008 are designed to work with ASP.NET AJAX controls. The Measurement Studio ASP.NET Web Forms controls for Visual Studio 2005 are not designed to work with Microsoft ASP.NET AJAX controls.

Use this class library to add measurement-specific user interface controls to your Web application. You can configure the controls programmatically at design time or through the Properties window in the Web Forms Designer. The following sections describe each of the Measurement Studio Web Forms user interface controls.

## Waveform Graph and Scatter Graph Controls

Use the Measurement Studio waveform graph and scatter graph controls, as shown in Figure 2-13, to display two-dimensional data on a Web-based user interface. Use the waveform graph to display two-dimensional linear data. You explicitly specify each value in one dimension and provide an initial value and interval to implicitly specify the values in the other dimension. Use the scatter graph to display two-dimensional linear or nonlinear data: you explicitly specify each value in both dimensions.



**Figure 2-13.** Waveform Graph and Scatter Graph Web Forms Controls; Both Graphs Have Corresponding Legends

With the waveform graph and scatter graph controls and the classes that interface with the controls, you can perform the following operations:

### Plot Operations

- Plot and chart arrays of double-precision floating point values, analog waveforms, and complex waveforms.
- Configure a graph to contain multiple plots to show separate but related data on the same graph.

- Draw lines or fills from a plot to an X value, Y value, or another plot.
- Specify plots in the scatter graph control as X and Y data. Specify plots in the waveform graph control as X or Y data and optionally with date and time scaling.
- Use the extensible plot and plot area drawing capabilities and events to customize the graph appearance.
- Create custom point and line styles for plots.
- Specify anti-aliased plots for plot lines.
- Calculate and display error bands.
- Configure plot to specify how data is saved and restored across HTTP requests.

## Axis Operations

- Configure a graph to include multiple axes or independent ranges so that plot data fits the graph plot area.
- Configure the axis modes to fixed or autoscaling based on the visible data, strip chart, or scope chart.
- Use logarithmic axes with configurable bases.
- Interactively change the range of an axis and invert the axis at run time by clicking on the axis end labels.
- Configure major, minor, and custom divisions and origin lines.

## Cursor Operations

- Use cursors to identify key points in plots and the plot area.
- Configure cursor snap modes to be floating, nearest point, or to plot.
- Use cursor labels to display X and Y data coordinates in a customized format that the cursor crosshair points to, and customize the text font and colors of the label.
- Create custom point and line styles for cursors.
- Interactively move the cursor by clicking and dragging the vertical or horizontal crosshair or the center of the cursor.
- Programmatically move the cursor to previous or next position or to a specified coordinate.

## Annotation Operations

- Configure text labels, arrows, and drawing shapes to annotate a point anywhere in the plot area of the graph.
- Configure range area, text labels, and arrows to annotate a range in the plot area of the graph.

## Additional Operations

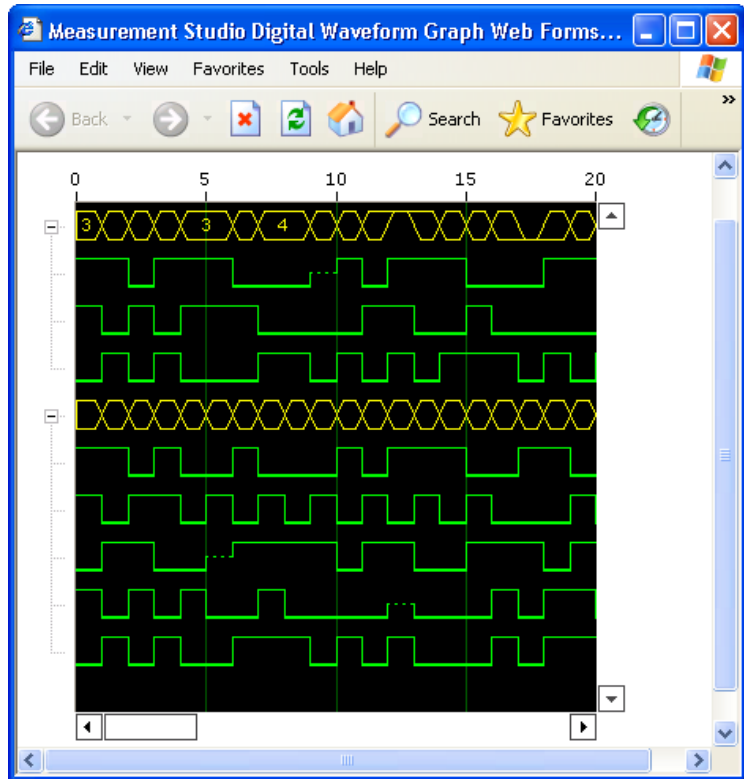
- Zoom interactively as well as programmatically.
- Specify the image format of the control as BMP, GIF, JPEG, or PNG.



**Tip** For more information about using the waveform and scatter graph controls, refer to the *Using the Measurement Studio Web Forms Scatter and Waveform Graph .NET Controls* section in the *NI Measurement Studio Help*.

## Digital Waveform Graph Control

Use the Measurement Studio digital waveform graph control, as shown in Figure 2-14, to display `DigitalWaveForm` data in an ASP.NET Web application.



**Figure 2-14.** Digital Graph Web Forms Control

With the digital waveform graph control and the classes that interface with the control, you can perform the following operations:

### Plot Operations

- Plot digital waveform data, including digital signal state data and timing information.
- Configure plot labels on the y-axis.
- Configure plot templates to customize plots that are implicitly created from plotted data.

- Specify anti-aliased digital plots.
- Expand and collapse signal plots interactively as well as programmatically.

### Waveform Sample and Signal State Operations

- Simultaneously display waveforms and signals or display signals only.
- Create custom waveform sample and signal state styles.
- Configure the appearance of sample and state labels.
- Create custom waveform sample and signal state labels.

### Axis Operations

- Configure the axis modes to fixed, exact autoscaling, or loose autoscaling.
- Interactively change the range of an axis and invert the axis at run time by clicking on the axis end labels.
- Display captions on the axis and grid lines.
- Position the axis to display on one or both sides of the graph's plot area.
- Configure major, minor, and custom divisions.

### Additional Operations

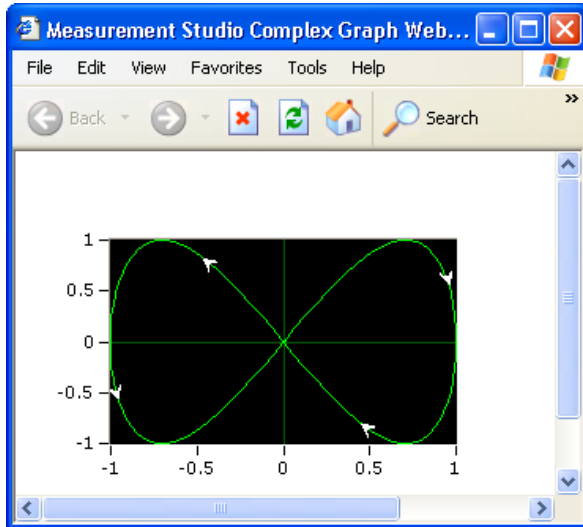
- Display data in sample or time mode.
- Configure the style and mode of scroll bars.
- Create custom scroll bars.
- Zoom interactively as well as programmatically.
- Specify the image format of the control as BMP, GIF, JPEG, or PNG.



**Tip** For more information about using the digital waveform graph control, refer to the *Using the Measurement Studio Web Forms Digital Waveform Graph .NET Control* section in the *NI Measurement Studio Help*.

## Complex Graph Control

Use the Measurement Studio complex graph control, as shown in Figure 2-15, to display `ComplexDouble` data on a ASP.NET Web application. A `ComplexDouble` consists of a real part and an imaginary part. You can use a waveform graph to plot complex waveform data.



**Figure 2-15.** Complex Graph Web Forms Control

With the complex graph control and the classes that interface with the control, you can perform the following operations:

### Plot Operations

- Plot and chart `ComplexDouble` data.
- Configure a graph to contain multiple plots to show separate but related data on the same graph.
- Draw lines or fills from a plot to an X value, Y value, or another plot.
- Use the extensible plot and plot area drawing capabilities and events to customize the graph appearance.
- Configure the plot to display arrows. The arrows indicate the direction of the complex data.
- Create custom point and line styles for plots.
- Specify anti-aliased plots for plot lines.
- Calculate and display error bands.
- Configure plot to specify how data is saved and restored across HTTP requests.

## Axis Operations

- Configure a graph to include multiple axes or independent ranges so that plot data fits the graph plot area.
- Configure the axis modes to: fixed; autoscaling, including autoscaling based on the visible data only; strip chart; or scope chart.
- Interactively change the range of an axis and invert the axis at run time by clicking on the axis end labels.
- Display origin lines, captions on the axis, and grid lines.
- Position the axis to display on one or both sides of the graph's plot area.
- Configure major, minor, and custom divisions and origin lines.

## Cursor Operations

- Use cursors to identify key points in plots and the plot area.
- Configure cursor snap modes to be floating, nearest point, or to plot.
- Use cursor labels to display X and Y data coordinates in a customized format that the cursor crosshair points to, and customize the text font and colors of the label.
- Create custom point and line styles for cursors.
- Interactively move the cursor by clicking and dragging the vertical or horizontal crosshair or the center of the cursor.
- Programmatically move the cursor to previous or next position or to a specified coordinate.

## Annotation Operations

- Configure text labels, arrows, and drawing shapes to annotate a point anywhere in the plot area of the graph.
- Configure range area, text labels, and arrows to annotate a range in the plot area of the graph.
- Annotate and label a magnitude value.
- Annotate and label a range of magnitude values for a particular phase.

## Additional Operations

- Zoom interactively as well as programmatically.
- Specify the image format of the control as BMP, GIF, JPEG, or PNG.



**Tip** For more information about using the complex graph control, refer to the *Using the Measurement Studio Web Forms Complex Graph .NET Control* section in the *NI Measurement Studio Help*.

## Legend Control

Use the Measurement Studio legend control, as shown in Figure 2-13, to display symbols and descriptions for a specific set of elements of another object, such as the plots or cursors of a graph. When you associate the legend control with another object, any changes you make to that object are automatically reflected in the legend. For example, if you associate the legend control with the plots of a graph, any changes you make in the plots collection editor are automatically reflected in the legend.



**Tip** For more information about using the legend control, refer to the *Using the Measurement Studio Web Forms Legend .NET Control* section in the *NI Measurement Studio Help*.

## Numeric Controls

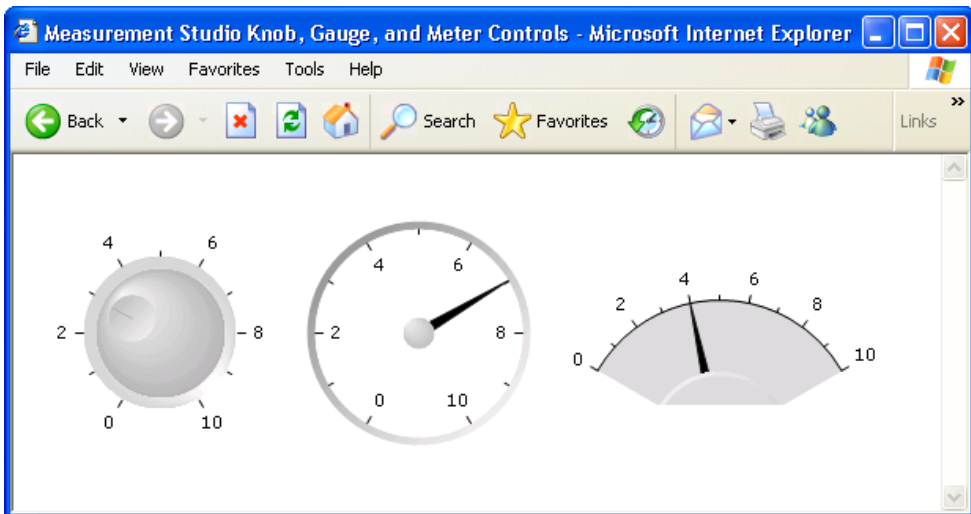
Use the Measurement Studio numeric controls to display numerical information in an ASP.NET Web application with the look of scientific instruments. The numeric controls include a knob, gauge, meter, slide, thermometer, and tank. The following sections describe operations available with the controls and the classes that interface with them.

With all of the numeric controls and the classes that interface with them, you can perform the following operations:

- Configure the scale to be linear or logarithmic and toggle the visibility of the scale.
- Fill the scale and configure the range, color, dimensions, and style of the fill.
- Connect to a Measurement Studio .NET numeric edit control so that if you change the value of one control, it changes the value of the other control.
- Customize the appearance of the control using 3D lab styles or classic 2D styles and change the color and length of ticks and labels.
- Configure the format of value labels to engineering or date/time.
- Specify the image format of the control as BMP, GIF, JPEG, or PNG.
- Interactively change the range of an axis and invert the axis at run time by clicking on the axis end labels.
- Display tooltips reflecting the current value of the pointer.

- Interactively change the value of the control by clicking the pointer with the mouse.
- Programmatically move the pointer to previous or next value.

Use the Measurement Studio knob, gauge, and meter controls, as shown in Figure 2-16, to input and display numeric data on your user interface.

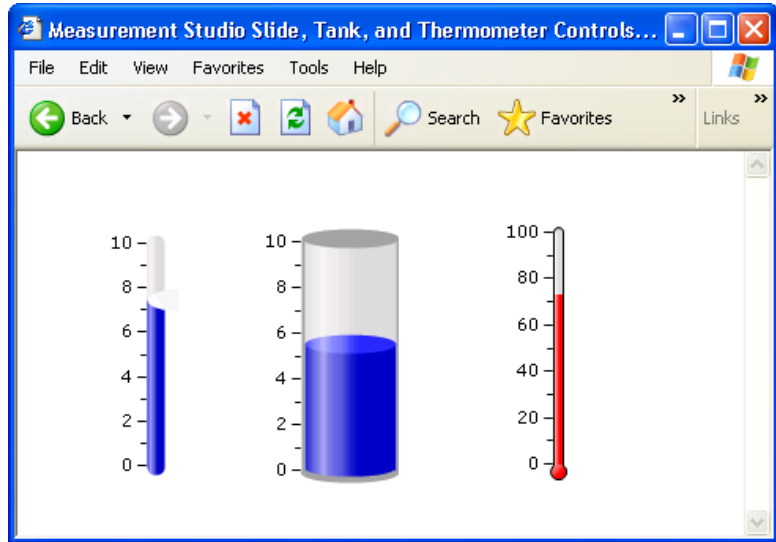


**Figure 2-16.** Knob, Gauge, and Meter Web Forms Controls

With the knob, gauge, and meter controls and the classes that interface with the controls, you can perform the following operations:

- Specify the start and sweep angle of the arc programmatically or from the Properties window.
- Use automatic division spacing, custom divisions, and invert the scale.

Use the Measurement Studio slide, tank, and thermometer controls, as shown in Figure 2-17, to input and display numeric data on your interface.



**Figure 2-17.** Slide, Tank, and Thermometer Web Forms Controls

With the slide, tank, and thermometer controls and the classes that interface with them, you can perform the following operations:

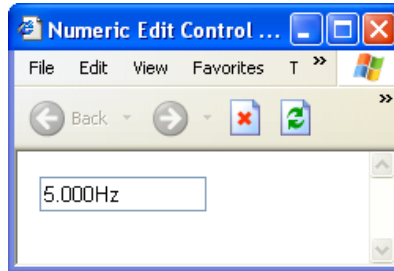
- Fill to the minimum or maximum value of the scale.
- Position the scale horizontally with left, right, or both and position the scale vertically with top, bottom, or both.



**Tip** For more information about using the Web Forms knob, gauge, meter, slide, tank, or thermometer controls, refer to the *Knob*, *Gauge*, *Meter*, *Slide*, *Tank*, or *Thermometer Class* sections in the *NI Measurement Studio Help*.

## Numeric Edit Control

Use the Measurement Studio numeric edit control, as shown in Figure 2-18, to display numeric values and to provide a way by which end users can edit numeric values. Typically, you use a numeric edit control to input or display double numerical data instead of using a Web Forms TextBox control.



**Figure 2-18.** Numeric Edit Web Forms Control

With the numeric edit control and the classes that interface with the control you can perform the following operations:

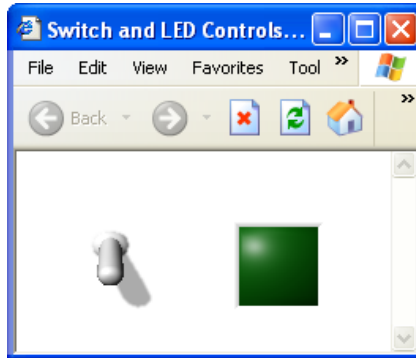
- Perform range checking.
- Set the minimum range value to negative infinity and the maximum range value to positive infinity.
- Create custom formats or use built-in numeric formats including generic, engineering, and simple double.
- Connect to a Measurement Studio numeric control so that if you change the value of one control, it changes the value of the other control.
- Set the coercion mode property to discrete or continuous values. This property configures the control to allow entry or display of either a discrete set of values or any value.
- Validate and format data without posting back to the Web server.



**Tip** For more information about using the Web Forms numeric edit control, refer to the *NumericEdit Class* section in the *NI Measurement Studio Help*.

## Switch and LED Controls

Use the Measurement Studio switch and LED controls as Boolean controls in an ASP.NET Web application. You typically use a switch control to receive and control Boolean input in an ASP.NET Web application. You typically use an LED control to indicate a Boolean value on an ASP.NET Web application. The switch and LED controls are shown in Figure 2-19.



**Figure 2-19.** Switch Web Forms Control in Vertical Toggle 3D Style and LED Web Forms Control in Square 3D Style

With the switch and LED controls and the classes that interface with the controls, you can perform the following operations:

- Receive notification before or after the state of the control changes.
- Specify the image format of the control as BMP, GIF, JPEG, or PNG.
- Configure the appearance of the control.
- Configure the LED control to blink while it is on or off and configure the rate at which the LED control blinks.



**Tip** For more information about using the switch and LED controls, refer to the *Using the Measurement Studio Web Forms Switch and LED .NET Controls* section in the *NI Measurement Studio Help*.

## AutoRefresh Control

Use the AutoRefresh control to update a Web control or a group of Web controls on the client at a specified interval.

The AutoRefresh control uses the ASP.NET client callback architecture to update a control or a group of controls at a specified interval. The AutoRefresh control sets up a timer inside the browser using Javascript. When the timer elapses, the AutoRefresh updates the controls in the AutoRefresh group. For down-level browsers, the controls update when the page posts back to the server. If the client browser supports client callbacks, the client-side script rendered by the AutoRefresh control uses a client callback to update the associated controls on the client without posting the page back to the server.



**Note** The autorefresh control is designed to work with the ASP.NET AJAX update panel and timer controls in Visual Studio 2008.

## AutoRefresh Callback

This feature provides a mechanism for updating the `RefreshManager.Enabled` and `AutoRefresh.Interval` properties for `AutoRefresh` from within the `AutoRefresh.Refresh` callback, allowing you to turn off the `AutoRefresh` or change the `Interval` during an asynchronous HTTP request without causing a postback.

---

# Measurement Studio Integrated Tools and Features

When you use Measurement Studio in the Visual Studio environment, you have access to measurement and automation tools and features for Visual Basic .NET, Visual C#, and ASP.NET. These integrated tools and features are designed to help you quickly and easily build measurement and automation applications. These integrated tools and features are included in support for both Visual Studio 2005 and Visual Studio 2008.

This chapter includes the following sections to help you develop applications with Measurement Studio:

- *Measurement Studio Menu*
- *Creating a Measurement Studio Project*
- *Adding or Removing Measurement Studio .NET Class Libraries*

Refer to the *Developing with Measurement Studio* section in the *NI Measurement Studio Help* for more information about the functionality of these tools and features.

---

## Measurement Studio Menu

The Measurement Studio Menu provides an easy way to access the following National Instruments resources and tools:

- **Add/Remove .NET Class Libraries Wizard**—Use the Measurement Studio Add/Remove .NET Class Libraries wizard to add or remove Measurement Studio class libraries or assemblies in existing Visual Basic .NET and Visual C# projects.
- **Refresh Project License File**—Use the Refresh Project License File to update the `licenses.licx` file in a Measurement Studio project to the currently referenced Measurement Studio assemblies. The Refresh Project process works by going through the `licenses.licx` file line by line for the active project and removing each Measurement Studio licensed type that matches the Measurement Studio `PublicKeyToken`. After all Measurement Studio licensed types are

removed from the `licenses.licx` file, the current Measurement Studio licensed types that are referenced by the project are added to the `licenses.licx` file. This ensures all Measurement Studio licensed types used by the project are added to the `licenses.licx` file.

- **Add 64-Bit Protection to Project**—Updates your project’s platform target to x86 and updates your project to protect it from build error LC0000. Refer to *Using Measurement Studio on 64-Bit Operating Systems* and *Protecting Your Project from LC0000 Build Error* in the *NI Measurement Studio Help* for more information. This menu item is only available in Visual Studio 2005 on a 64-bit Windows OS. Visual Studio 2008 projects function correctly without this protection.
- **Remove 64-Bit Protection from Project**—Removes protection for build error LC0000 from your project. Refer to *Using Measurement Studio on 64-Bit Operating Systems* and *Protecting Your Project from LC0000 Build Error* in the *NI Measurement Studio Help* for more information. This menu item is only available in Visual Studio 2005 on a 64-bit Windows OS. Visual Studio 2008 projects function correctly without this protection.
- **Update Measurement Studio Project References**—Updates any outdated Measurement Studio references to the latest version installed on the system.
- **Measurement Computing»InstaCal**—Use *InstaCal* to configure, calibrate, and test MCC hardware.
- **NI Tools»Variable Manager**—Use Variable Manager to create new processes and variables, delete existing processes and variables, start and stop processes, create variables with specific data types or the variant data type, allow multiple writers or restrict write access to a single client, and configure server buffering. Select **NI Tools»Variable Manager** to access this menu item.
- **MCC Tools»GPIBConfig**—Use GPIBConfig to configure MCC GPIB hardware. Select **MCC Tools»GPIBConfig** to access this menu item.
- **NI Measurement Studio Help**—Use the *NI Measurement Studio Help* to access detailed Measurement Studio help, including function reference, walkthroughs, and conceptual topic documentation on developing with Measurement Studio.

- **Measurement Studio Online Resources»Measurement Studio Home Page**—Use the Measurement Studio Web site at [ni.com/mstudio](http://ni.com/mstudio) to find Measurement Studio news, support, downloads, and evaluation software. Select **Measurement Studio Online Resources»Measurement Studio Home Page** to access this menu item.
- **Measurement Studio Online Resources»Instrument Driver Network**—Use the NI Instrument Driver Network at [ni.com/idnet](http://ni.com/idnet) as a central resource for downloading, developing, and submitting instrument drivers. Select **Measurement Studio Online Resources»Instrument Driver Network** to access this menu item.
- **Measurement Studio Online Resources»Discussion Forums**—Use the NI Discussion Forums at [forums.ni.com](http://forums.ni.com) to participate in discussion forums and exchange code with measurement and automation developers around the world. Select **Measurement Studio Online Resources»Discussion Forums** to access this menu item.
- **Measurement Studio Online Resources»Search Technical Support**—Use NI Technical Support at [ni.com/support](http://ni.com/support) to find support resources available for most products, including software drivers and updates, KnowledgeBase articles, product manuals, step-by-step troubleshooting wizards, conformity documentation, example code, tutorials and application notes, instrument drivers, discussion forums, and a measurement glossary. Select **Measurement Studio Online Resources»Search Technical Support** to access this menu item.
- **Patents**—Use the Patents dialog box to view information about NI patents.
- **Licenses**—Use the Licenses dialog box to view information about NI licenses.
- **About Measurement Studio**—Use the Measurement Studio About box to view version information.
- **Preferences**—Use the Measurement Studio Preferences dialog box to configure Measurement Studio settings, such as conversion options and add-in preferences. Select **Tools»Options** to access this menu item.



**Tip** For more information about the resources included in the Measurement Studio Menu, refer to the *Measurement Studio Menu* topic in the *NI Measurement Studio Help*.

# Creating a Measurement Studio Project

Measurement Studio includes class library and application templates that you can use to quickly create measurement applications with Visual Basic .NET, Visual C#, and ASP.NET. Refer to the *Walkthrough: Creating a Measurement Studio Application with Web Forms Controls and Analysis* or *Walkthrough: Creating a Measurement Studio Application with Windows Forms Controls and Network Variable* section of Chapter 4, *Getting Started with Measurement Studio*, for step-by-step instructions on how to create a Measurement Studio project. Use the Visual Studio New Project dialog box, as shown for Visual Studio 2005 in Figure 3-1, to access these templates and to create projects. You can create the following projects in Measurement Studio:

- Measurement Studio Visual Basic .NET project
- Measurement Studio Visual C# project
- Measurement Studio ASP.NET project

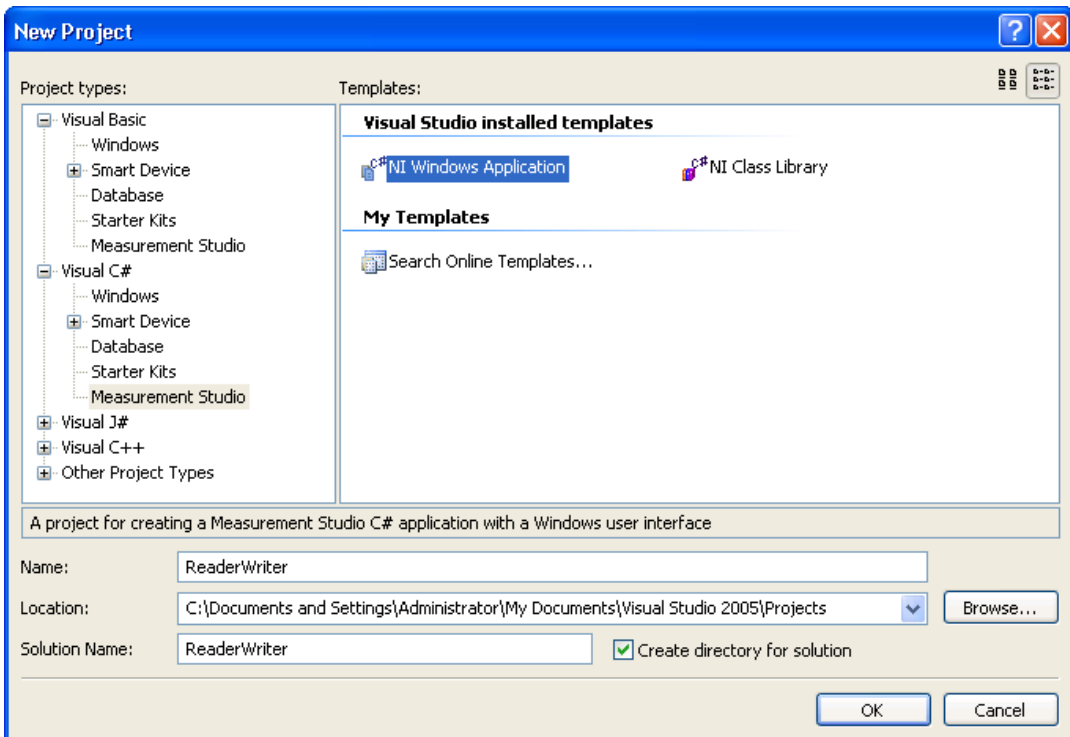


Figure 3-1. New Project Dialog Box in Visual Studio 2005

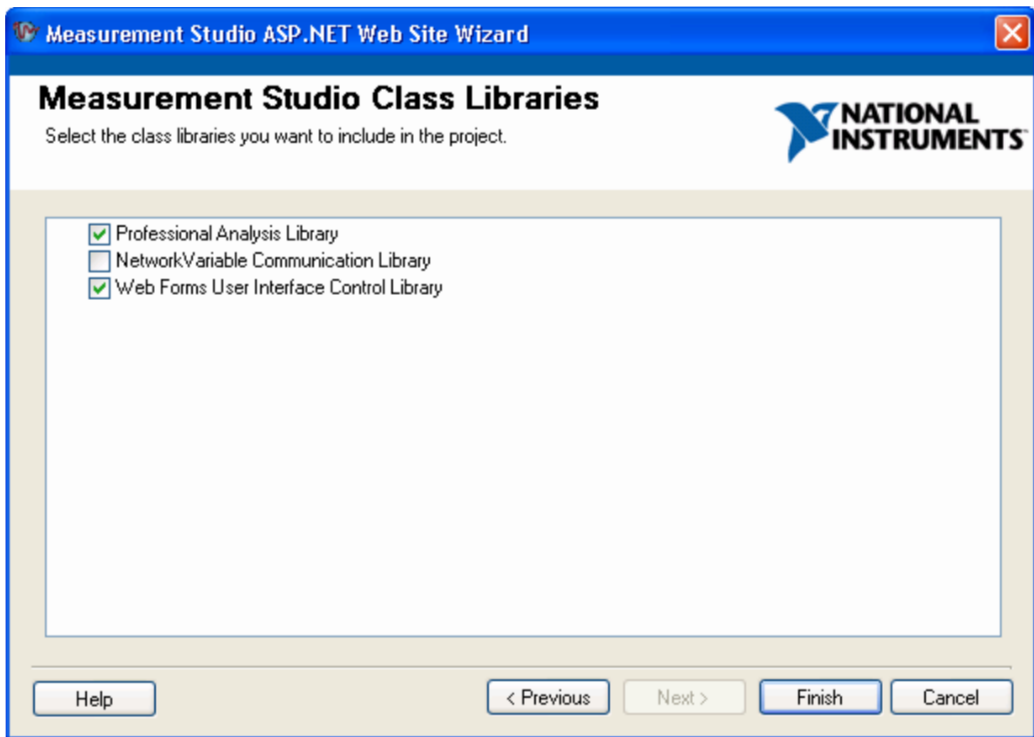


**Tip** For more information about using project templates to create a new Measurement Studio project, refer to the *Creating a New Measurement Studio Project* section in the *NI Measurement Studio Help*.

## Adding or Removing Measurement Studio .NET Class Libraries

To add or remove Measurement Studio .NET class libraries from a project, use the Measurement Studio Add/Remove .NET Class Libraries wizard on the Measurement Studio menu. This wizard provides an interface, as shown in Figure 3-2, that you can use to select the Measurement Studio .NET class libraries you want to add to or remove from a project.

When you exit the wizard, the wizard adds or removes the appropriate references to or from the project, thus adding or removing the functionality associated with the class library.



**Figure 3-2.** Measurement Studio Add/Remove Class Libraries Wizard



**Tip** For more information about using the Add/Remove .NET Class Libraries wizard to add or remove Measurement Studio .NET class libraries, refer to the *Adding or Removing Measurement Studio .NET Class Libraries* section in the *NI Measurement Studio Help*.

---

# Getting Started with Measurement Studio

The following sections include overview information and step-by-step instructions on developing applications with Measurement Studio tools and features. Refer to the *Developing with Measurement Studio* section and the *Getting Started with the Measurement Studio Class Libraries* section of the *NI Measurement Studio Help* for more information about the functionality of these tools and features.

## Measurement Studio Walkthroughs

---

Use the following walkthroughs to help you develop Measurement Studio applications:

- [\*Walkthrough: Creating a Measurement Studio Application with Windows Forms Controls and Analysis\*](#)
- [\*Walkthrough: Creating a Measurement Studio Application with Web Forms Controls and Analysis\*](#)
- [\*Walkthrough: Creating a Measurement Studio Application with Windows Forms Controls and Network Variable\*](#)
- [\*Walkthrough: Creating a Measurement Studio Application with Web Forms Controls and Network Variable\*](#)
- [\*Walkthrough: Creating a Measurement Studio Measurement Computing DAQ Application\*](#)
- [\*Walkthrough: Creating a Measurement Studio MCCDaq Scan Components Application\*](#)
- [\*Walkthrough: Creating a Measurement Studio MCC-488.2 Application\*](#)

# Walkthrough: Creating a Measurement Studio Application with Windows Forms Controls and Analysis

---

Measurement Studio includes user interface controls, such as a waveform graph control and a gauge control, and analysis functionality, such as signal generation and mathematical functions. This walkthrough is designed to help you learn how to add analysis and presentation functionality to a Windows Forms application by taking you through the following steps:

- **Setting up the project**—Using the Measurement Studio Application Wizard, you will create a new project that references the Measurement Studio Analysis class library and Windows Forms controls.
- **Adding user interface controls to the project**—Using the Toolbox, smart tags, and the Properties window, you will add and configure a button, waveform graph, legend, gauge, and numeric edit user interface control.
- **Generating, plotting, and analyzing the data**—Using `NationalInstruments.Analysis.SignalGeneration.WhiteNoiseSignal` and `NationalInstruments.Analysis.Math.Statistics.Mean`, you will generate data, plot the generated data on a waveform graph, and calculate the mean of the data.
- **Customizing the user interface**—Using smart tags and the Collection Editor and Auto Format dialog boxes, you will display the mean value on the gauge and the numeric edit, as well as customize your user interface.

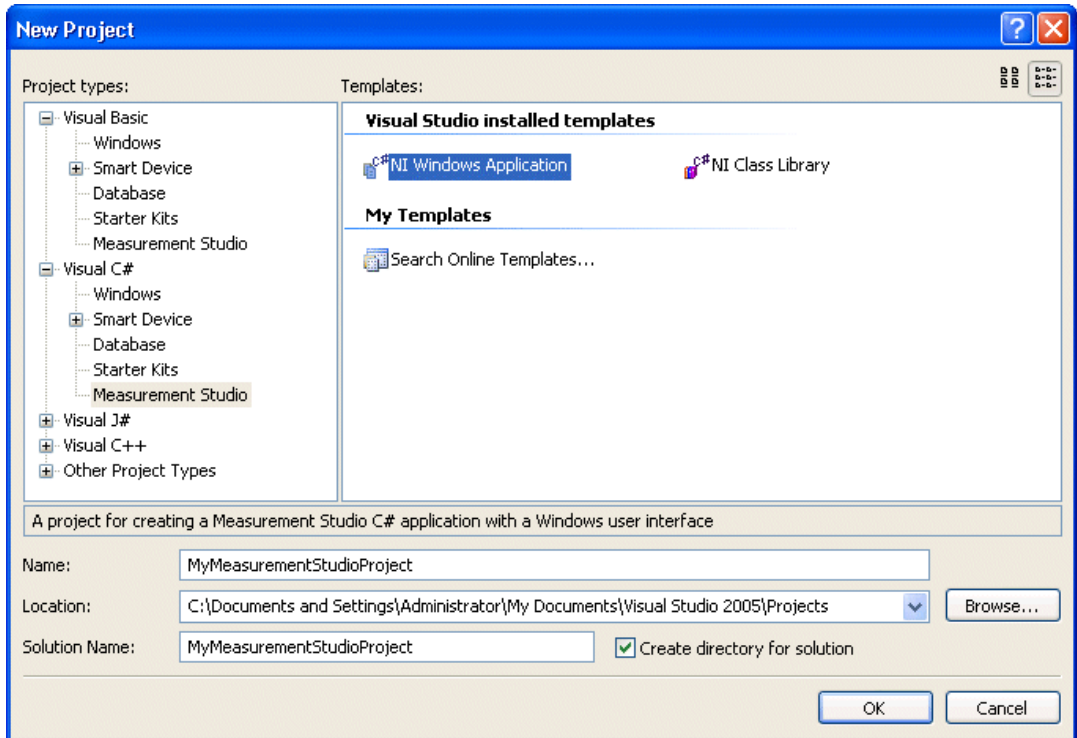
## Before you begin

The following components are required to complete this walkthrough:

- Microsoft Visual Studio 2005 or Visual Studio 2008
- Measurement Studio 8.0.1 or later for Visual Studio 2005 or Measurement Studio 8.5 or later for Visual Studio 2008

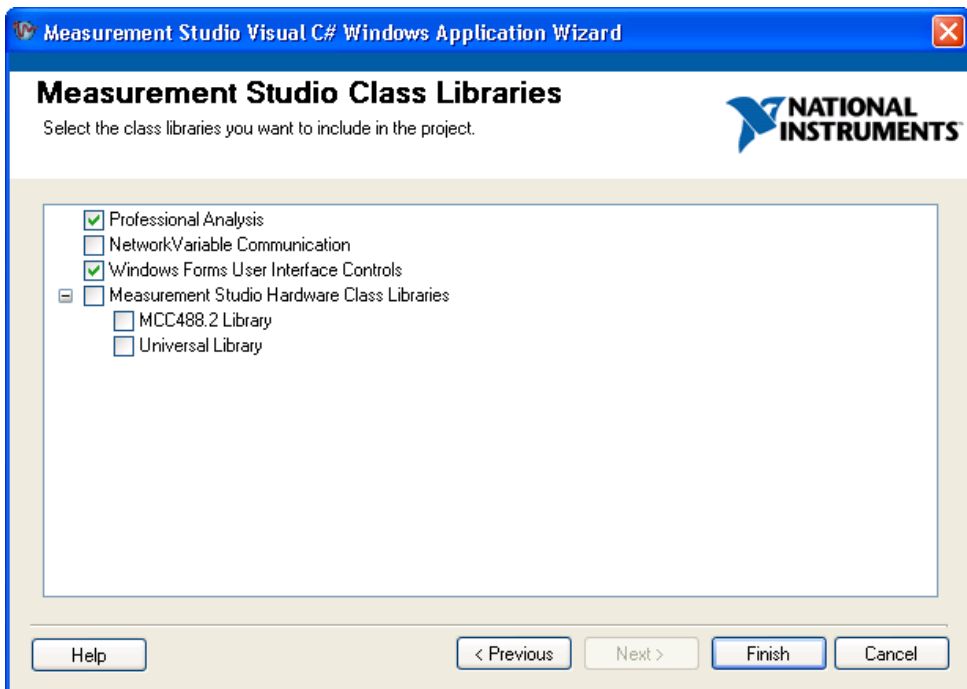
## Setting up the project

1. Select **Start»All Programs»Microsoft Visual Studio 2005»Microsoft Visual Studio 2005** or **Start»All Programs»Microsoft Visual Studio 2008»Microsoft Visual Studio 2008**.
2. Select **File»New»Project**. The New Project dialog box launches.



3. In the Project Types pane, select **Measurement Studio** under Visual C# or Visual Basic, depending on which language you want to create the project in.
4. In the Templates pane, select **NI Windows Application**. Specify `MyMeasurementStudioProject` for **Name** and specify a **Location** of your choice.
5. Click **OK**. The Measurement Studio Application Wizard launches.

6. Select **Analysis Library** and **Windows Forms User Interface Control Library**.



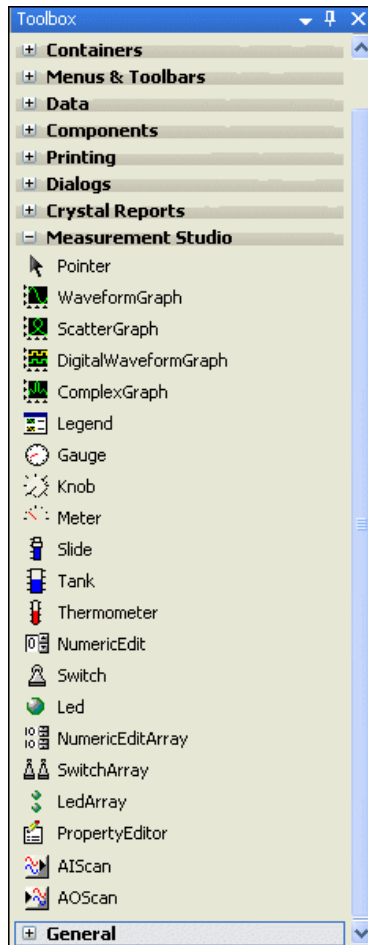
**Tip** If you are working with an existing project, you can access the Add/Remove Class Libraries dialog box by selecting **Measurement Studio»View .NET Class Library Wizard**.

7. Click **Finish** to display `Form1` in the Windows Forms Designer.

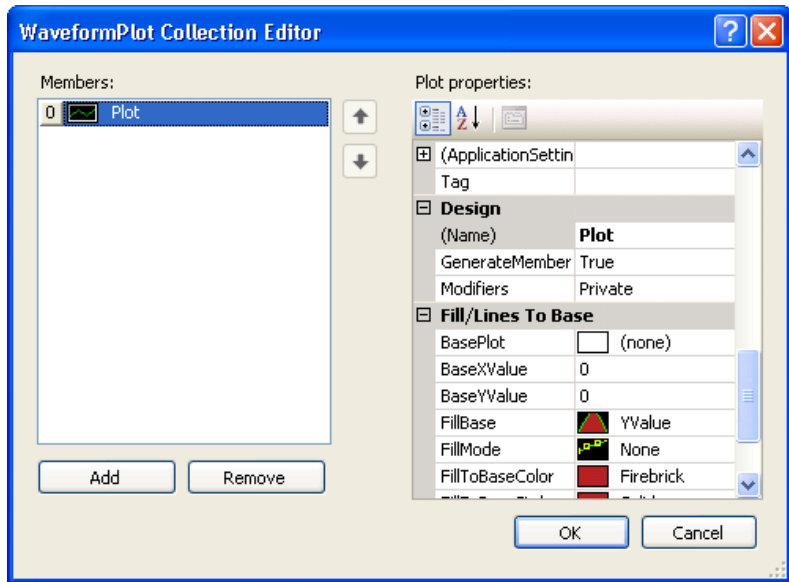
**Adding user interface controls to the project**

1. Select **View»Toolbox** to display the Toolbox. The Toolbox contains components and controls that you can add to your project.
2. Expand the **All Windows Forms** group. The All Windows Forms group contains controls and components included in the `System.WindowsForms` namespace.
3. Select the **Button** control and drag and drop it onto the form.
4. Right-click the button and select **Properties** to display the Properties window. You configure the properties of the control in the Properties window.

5. The Text property will be highlighted. Type `start` for the button text.
6. Expand the **Measurement Studio** group in the Toolbox.



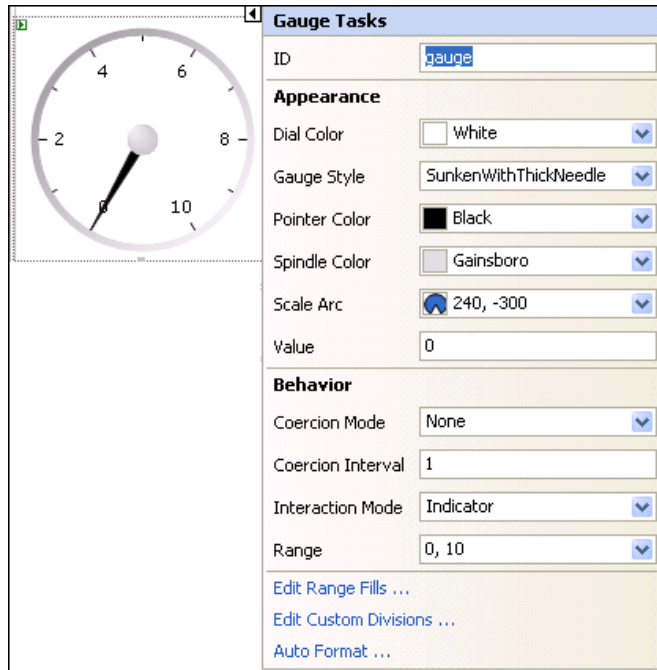
7. Select the **WaveformGraph** control and drag and drop it onto the form.
8. Right-click the waveform graph and select **Edit Plots** to display the WaveformPlot Collection Editor dialog box. You use the WaveformPlot Collection Editor dialog box to add or remove plots and to configure plot properties.



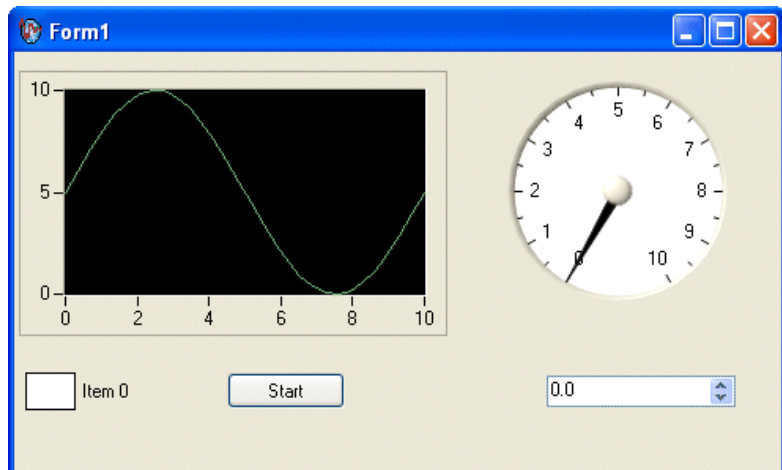
**Note** You can also access the WaveformPlot Collection Editor dialog box by clicking the waveform graph smart tag. To access the smart tag, left click on the control to select it and then left click on the arrow button in the upper right corner of the control.

9. Type `Plot` for the Name. Click **OK**.
10. Before you add the Measurement Studio legend, numeric edit, and gauge controls, you need to resize the form to accommodate them. Select the form and use the double-sided arrow to resize it.
11. Select the **Legend** control and drag and drop it onto the form.
12. Select the **NumericEdit** control and drag and drop it onto the form.
13. Select the **Gauge** control and drag and drop it onto the form.

14. Click the gauge smart tag to display the Gauge Tasks.



15. Type gauge for the name of the gauge.



### Generating, plotting, and analyzing the data

1. Double-click the button control to display the `Form1` code, with the cursor inside the click event handler of the button control.
2. Add the following code to generate random data, plot the data, calculate the mean of the data, and display the mean on the gauge.

```
[VB.NET]
```

```
' Declare and initialize an instance of WhiteNoiseSignal.
Dim whiteNoise As New WhiteNoiseSignal()

' Store the generated data in a double array named data.
Dim data As Double() = whiteNoise.Generate(1000.0, 256)

' Use the PlotY method to plot the data.
Plot.PlotY(data)

' Use the Mean method to calculate the mean of the data.
Dim mean As Double = Statistics.Mean(data)

' Display the mean on the gauge.
gauge.Value = mean

[C#]
```

```
// Declare and initialize an instance of WhiteNoiseSignal.
WhiteNoiseSignal whiteNoise = new WhiteNoiseSignal();

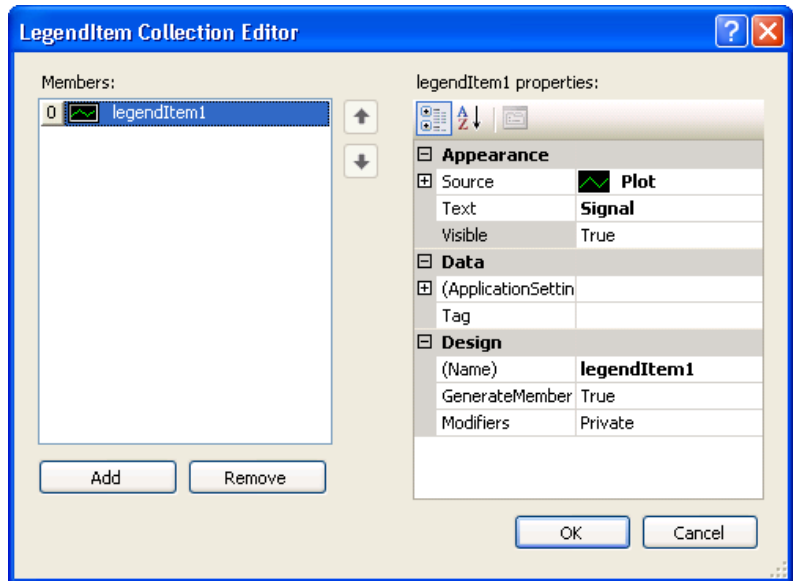
// Store the generated data in a double array named data.
double[] data = whiteNoise.Generate(1000.0, 256);
// Use the PlotY method to plot the data.
Plot.PlotY(data);

// Use the Mean method to calculate the mean of the data.
double mean = Statistics.Mean(data);

// Display the mean on the gauge.
gauge.Value = mean;
```

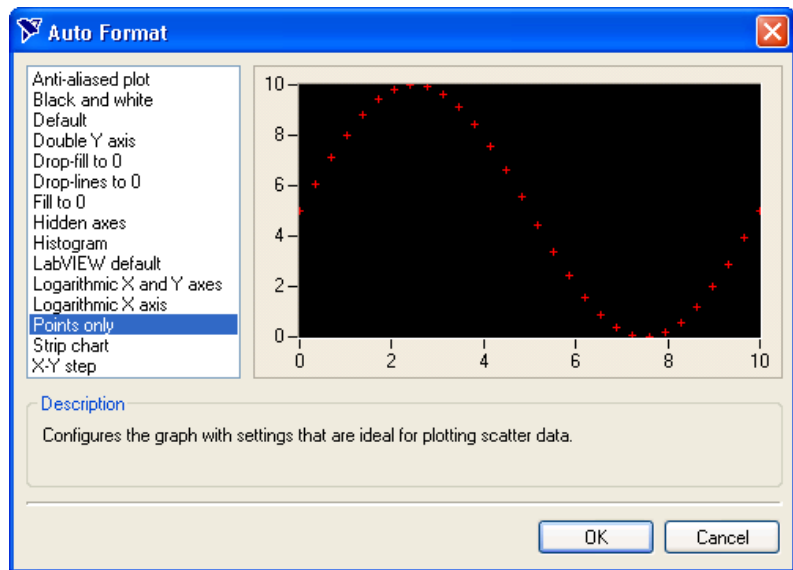
## Customizing your user interface

1. Right-click the legend and select **Edit Items** to display the LegendItem Collection Editor dialog box. You use the LegendItem Collection Editor dialog box to add or remove legend items and to configure legend item properties.



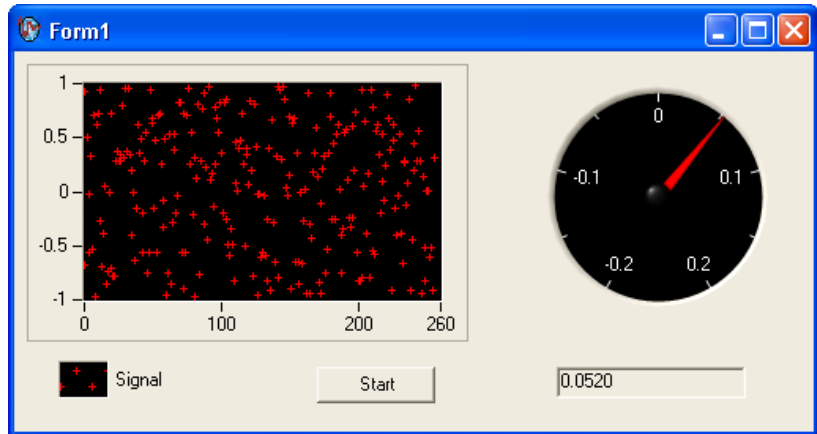
2. Select **Plot** in the **Source** drop-down list and enter `Signal` in the **Text** box. Click **OK**. Now that you have specified a legend item for the plot, changes you make to the plot will be reflected on the legend.
3. Right-click the graph and select **Auto Format** to display the Auto Format dialog box. The Auto Format dialog box provides a set of pre-configured control styles. When you select a style and click **OK**, the Auto Format feature configures the appropriate control properties to reflect the style you chose.

4. Select **Points Only**. Click **OK**. Notice that the legend changed automatically to match the formatting of the graph.



5. Click the gauge smart tag to display the Gauge Tasks.
6. Select **Auto Format** to display the Auto Format dialog box.
7. Select **Dark** and click **OK**.
8. Right-click the gauge and select **Properties** to display the Properties window.
9. Set the Range property for the gauge with the drop-down Range type editor. Type  $-0.2$  for the minimum value and type  $0.2$  for the maximum value.
10. Click the numeric edit smart tag to display the Numeric Edit Tasks.
11. Select **Gauge** in the **Source** drop-down list. Setting the Source property to the gauge allows two-way binding between the controls.
12. Deselect **ArrowKeys**, **Buttons**, and **Text** for the **InteractionMode** property of the numeric edit control. Deselecting these interaction modes makes the numeric edit an indicator. The numeric edit control only displays the calculated mean.
13. Select the Format Mode property and in the Numeric Edit Format Mode Editor dialog box, change the Precision to 4 to show four decimal places of precision.
14. Select **File>Save Form1.cs** to save your application.

15. Select **Debug»Start Without Debugging** to run the application.
16. After your program builds, click **Start**. Notice the graph shows the data plot, and the gauge and the numeric edit display the mean of the data.



## Walkthrough: Creating a Measurement Studio Application with Web Forms Controls and Analysis

Measurement Studio includes user interface controls, such as a waveform graph control and a gauge control, and Analysis functionality, such as signal generation and mathematical functions. This walkthrough is designed to help you learn how to add analysis and presentation functionality to a Web Forms application by taking you through the following steps:

- **Setting up the project**—Using the Measurement Studio Application Wizard, you will create a new project that references the Measurement Studio Analysis class library and Web Forms controls.
- **Adding user interface controls to the project**—Using the Toolbox and the Properties window, you will add and configure a button, waveform graph, legend, gauge, and numeric edit user interface control.
- **Generating, plotting, and analyzing the data**—Using `NationalInstruments.Analysis.SignalGeneration.WhiteNoiseSignal` and `NationalInstruments.Analysis.Math.Statistics.Mean`, you will generate data, plot the generated data on a waveform graph, and calculate the mean of the data.

- **Customizing the user interface**—Using the Collection Editor and Auto Format dialog boxes, you will display the mean value on the gauge and the numeric edit, as well as customize your user interface.

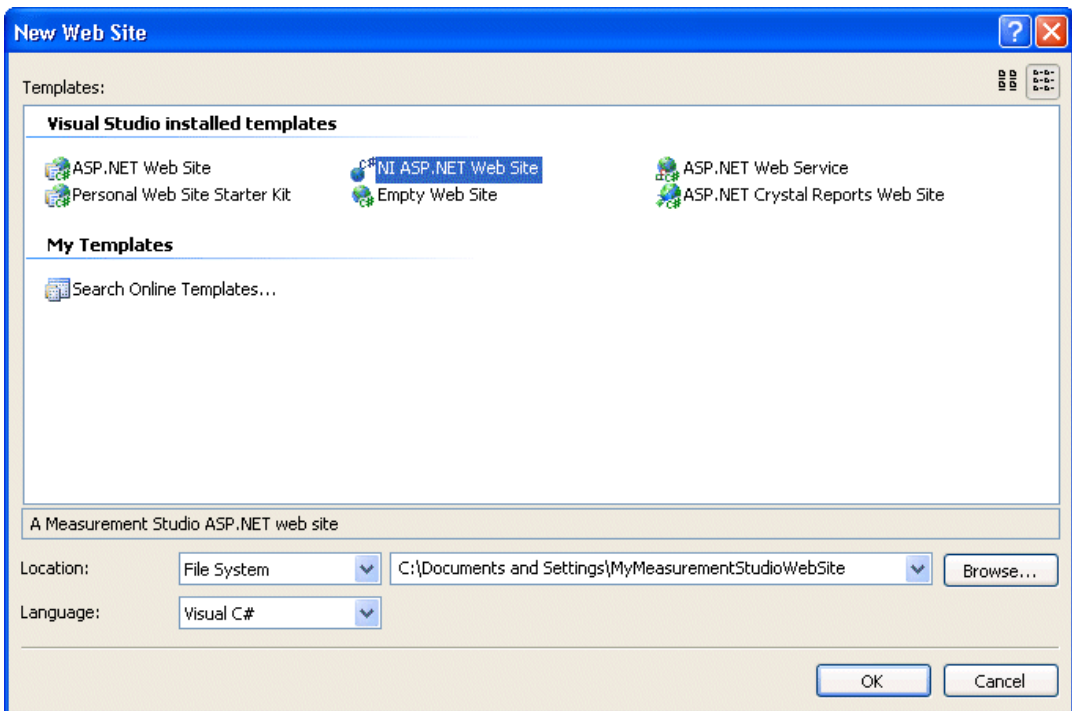
### Before you begin

The following components are required to complete this walkthrough:

- Microsoft Visual Studio 2005 or Visual Studio 2008
- Measurement Studio 8.0.1 or later for Visual Studio 2005 or Measurement Studio 8.5 or later for Visual Studio 2008

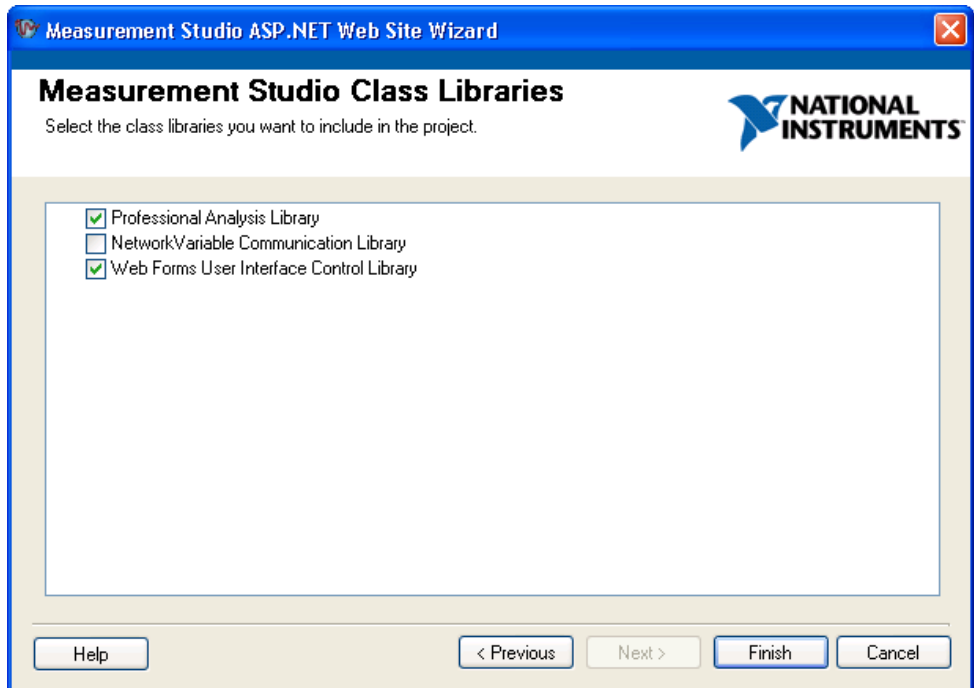
### Setting up the project

1. Select **Start»All Programs»Microsoft Visual Studio 2005»Microsoft Visual Studio 2005** or **Start»All Programs»Microsoft Visual Studio 2008»Microsoft Visual Studio 2008**.
2. Select **File»New»Web Site**. The New Web Site dialog box launches.



3. In the Templates pane, select **NI ASP.NET Web Site**. Select **File System** and specify a file path of your choice.

4. Use the drop-down box to select **Visual C#** or **Visual Basic**, depending on which language you want to create the project in.
5. Click **OK**. The Measurement Studio ASP.NET Web Site Wizard launches.
6. Select **Analysis Library** and **Web Forms User Interface Control Library**.

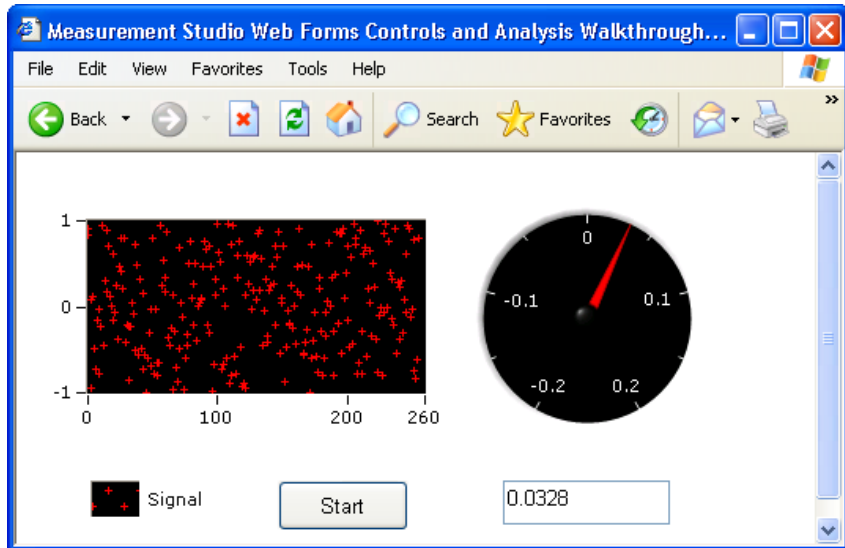


**Tip** If you are working with an existing project, you can access the Add/Remove Class Libraries dialog box by selecting **Measurement Studio»Add/Remove .NET Class Libraries Wizard**.

7. Click **Finish** to display `Default.aspx` in the Web Forms Designer.
8. You can change the title of your Web page. Click inside the `<title>` tag and rename the title to **Measurement Studio Web Forms Controls and Analysis Walkthrough**.

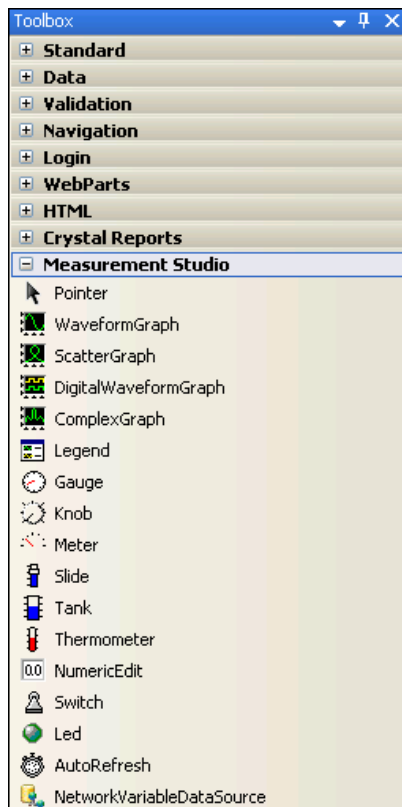
## Adding user interface controls to the project

1. In this section, you will build a Web page that looks like the following screenshot.



2. Click **Design** in the lower left corner to switch from Source View to Design View.
3. Select **View»Toolbox** to display the Toolbox. The Toolbox contains components and controls that you can add to your project.
4. Expand the **HTML** group on the Toolbox. Select the Table control in the Toolbox and drag and drop it on the form. You use the table cells to arrange the user interface controls on your Web page, as shown in the previous screenshot.
5. The default table that appears is  $3 \times 3$ . This table provides a customizable form for arranging the user interface controls for your Web page. Expand the table to approximately 300 px (pixels) tall by 550 px wide by clicking and dragging the table borders.
6. If you are using Visual Studio 2005, merge the top two cells of all three columns by selecting the cells, right-clicking, and selecting **Merge Cells**. If you are using Visual Studio 2008, merge the top two cells of all three columns by selecting the cells, right-clicking, and selecting **Modify»Merge Cells**.
7. Expand the **Standard** group on the Toolbox. The Standard group contains ASP.NET server controls included in the `System.Web.UI` namespace.

8. Select the **Button** control and drag and drop it into the lower right table cell.
9. Right-click the button and select **Properties** to display the Properties window. You configure the properties of the control in the Properties window.
10. Scroll to the Text property in the Properties window. Type `Start` for the button text.
11. Expand the **Measurement Studio** group on the Toolbox.

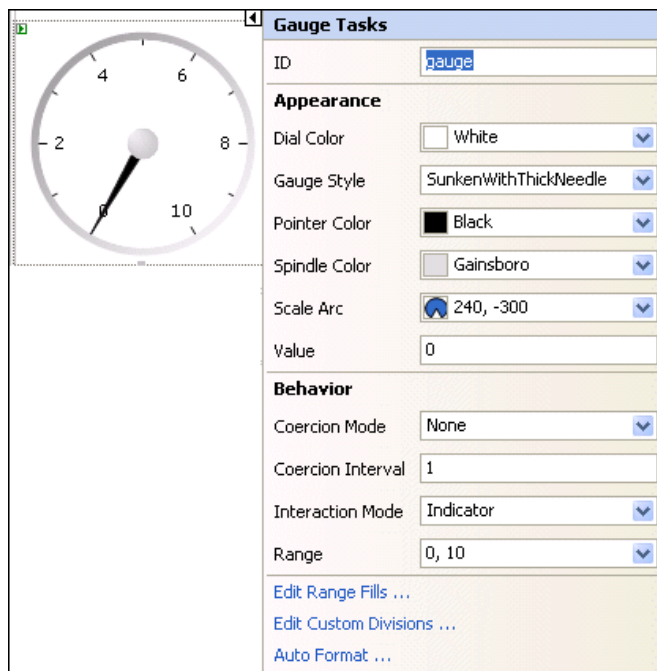


12. Select the **WaveformGraph** control and drag and drop it into the top table cell.
13. On the waveform graph smart tag, type `graph` for the name of the waveform graph ID.

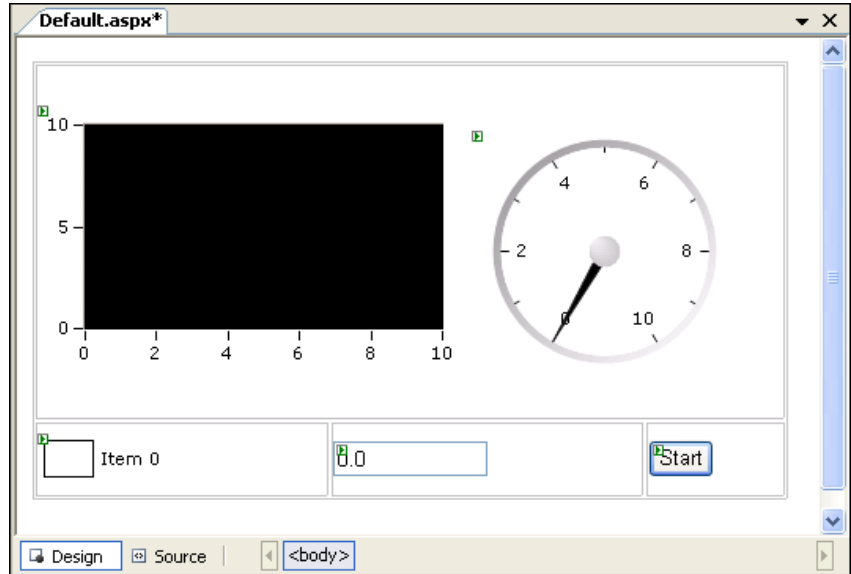


**Tip** To access the smart tag, left click on a control to select it and then left click on the arrow button in the upper right corner of the control.

14. Select the **Legend** control and drag and drop it into the bottom left table cell.
15. Select the **NumericEdit** control and drag and drop it into the bottom center table cell.
16. On the numeric edit smart tag, type `numericedit` for the name of the numeric edit ID.
17. Select the **Gauge** control and drag and drop it into the top table cell, to the right of the waveform graph. Resize controls and table cells as necessary.
18. On the gauge smart tag, type `gauge` for the name of the gauge ID.



The following screenshot shows `Default.aspx` with the user controls.



### Generating, plotting, and analyzing the data

1. Double-click the button control to display the `Default.aspx.cs` code, with the cursor inside the click event handler of the button control.
2. Add the following code to generate random data, plot the data, calculate the mean of the data, and display the mean on the gauge.

[VB.NET]

```
' Declare and initialize an instance of WhiteNoiseSignal.
Dim whiteNoise As New WhiteNoiseSignal()

' Store the generated data in a double array named data.
Dim data As Double() = whiteNoise.Generate(1000.0, 256)

' Use the PlotY method to plot the data.
graph.PlotY(data)

' Use the Mean method to calculate the mean of the data.
Dim mean As Double = Statistics.Mean(data)

' Display the mean on the numeric edit.
numericedit.Value = mean

' Display the mean on the gauge.
gauge.Value = mean
```

```
[C#]
// Declare and initialize an instance of WhiteNoiseSignal.
WhiteNoiseSignal whiteNoise = new WhiteNoiseSignal();

// Store the generated data in a double array named data.
double[] data = whiteNoise.Generate(1000.0, 256);

// Use the PlotY method to plot the data.
graph.PlotY(data);

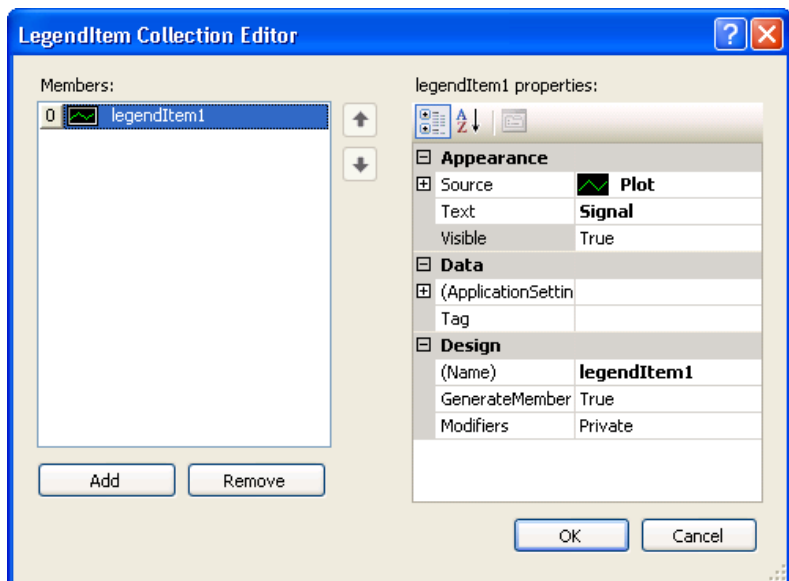
// Use the Mean method to calculate the mean of the data.
double mean = Statistics.Mean(data);

// Display the mean on the numeric edit.
numericedit.Value = mean;

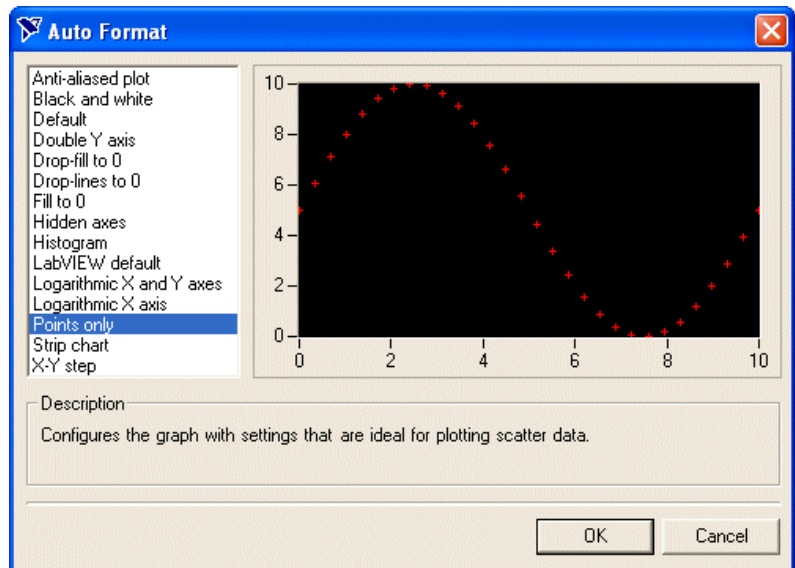
// Display the mean on the gauge.
gauge.Value = mean;
```

### Customizing your user interface

1. Select the **Default.aspx** tab to return to the Web Forms Designer.
2. Right-click the legend and select **Edit Items** to display the LegendItem Collection Editor dialog box. You use the LegendItem Collection Editor dialog box to add or remove legend items and to configure legend item properties.

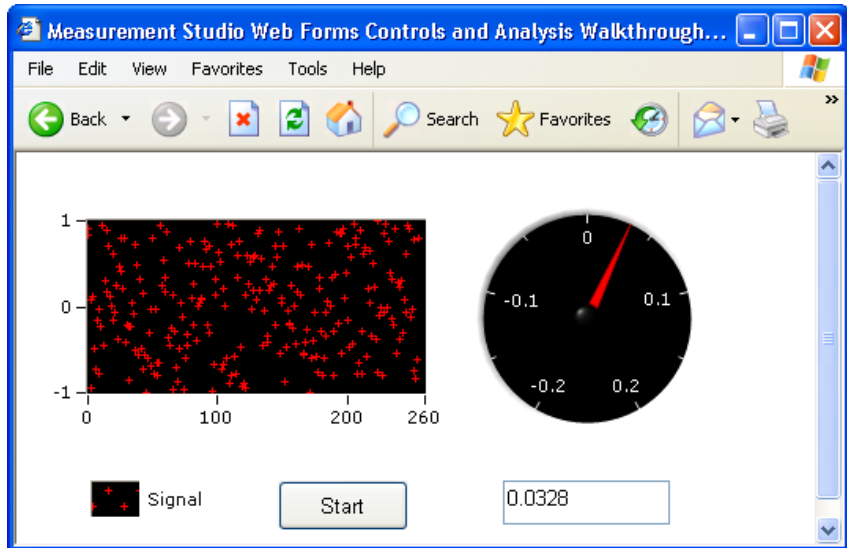


3. Select **Plots[0]** in the **Source** drop-down list and enter `Signal` in the **Text** box. Click **OK**. Now that you have specified a legend item for the plot, changes you make to the plot will be reflected on the legend.
4. Right-click the graph and select **Auto Format** to display the Auto Format dialog box. The Auto Format dialog box provides a set of pre-configured control styles. When you select a style and click **OK**, the Auto Format feature configures the appropriate control properties to reflect the style you chose.
5. Select **Points Only**. Click **OK**. Notice that the legend changed automatically to match the formatting of the graph.



6. Right-click the gauge and select **Auto Format** to display the Auto Format dialog box.
7. Select **Dark** and click **OK**.
8. On the gauge smart tag, set the Range property for the gauge with the drop-down Range type editor. Type `-0.2` for the minimum value and type `0.2` for the maximum value.
9. On the numeric edit smart tag, select **Indicator** for the **InteractionMode** property of the numeric edit control.
10. On the numeric edit smart tag, select Format Mode and in the Numeric Format Mode Editor dialog box, change the Precision to 4 to show four decimal places of precision. Click **OK**.

11. Select **File»Save Default.aspx** to save your application.
12. Select **Debug»Start Without Debugging** to run the application.
13. After your program builds, click **Start**. Notice the graph shows the data plot, and the gauge and the numeric edit display the mean of the data. The following screenshot shows `Default.aspx` in its final form.



# Walkthrough: Creating a Measurement Studio Application with Windows Forms Controls and Network Variable

---

Measurement Studio includes user interface controls, such as a waveform graph control, and network variable functionality to transfer live measurement data between applications over the network. This walkthrough is designed to help you learn how to add network variable functionality to a Windows Forms application by taking you through the following steps:

- **Writing an array of data to the server**—Using `NationalInstruments.NetworkVariable.NetworkVariableBufferedWriter<TValue>`, you will create and run a console application that writes an array of values to the server.
- **Setting up a Windows Forms project**—Using the Measurement Studio Application Wizard, you will create a new project that references the Measurement Studio Network Variable class library and Windows Forms controls.
- **Configuring the network variable data source control**—Using the Toolbox and the `NationalInstruments.NetworkVariable.WindowsForms.NetworkVariableDataSource` smart tag, you will add and configure a data source control to your application.
- **Displaying the array of data on a Windows Forms page**—Using the Toolbox, you will add and configure a `NationalInstruments.WaveformGraph` control to display the data.

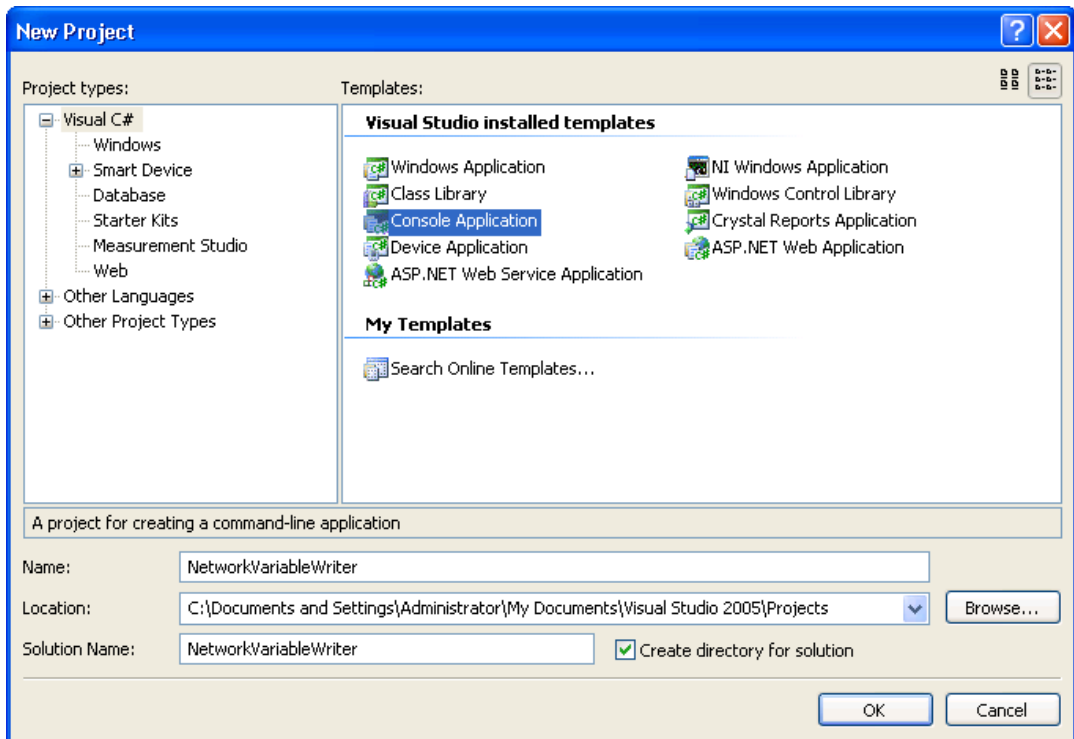
## Before you begin

The following components are required to complete this walkthrough:

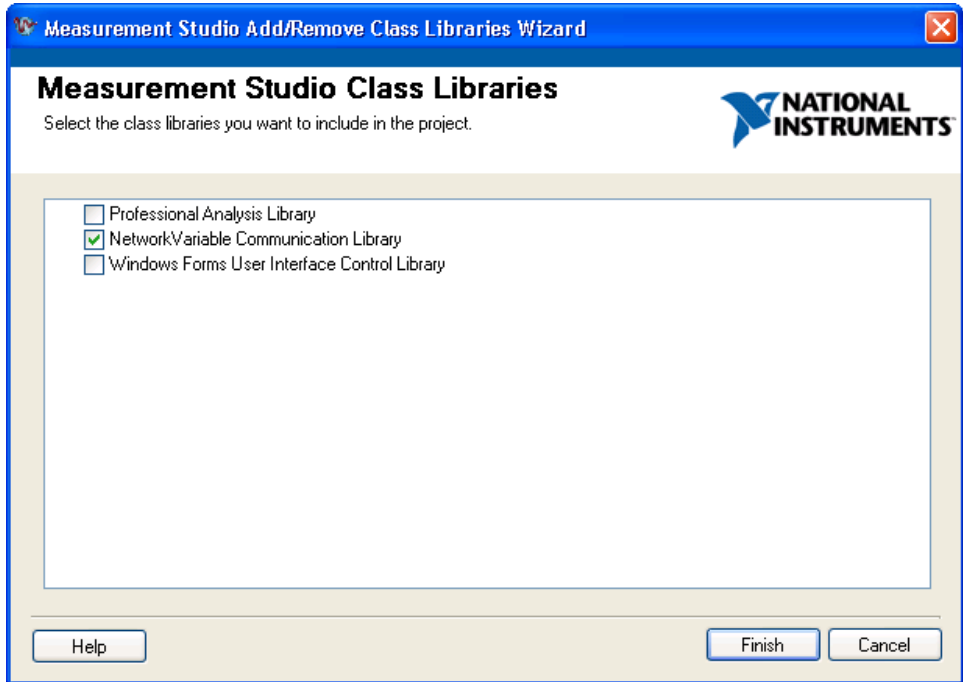
- Microsoft Visual Studio 2005 or Visual Studio 2008
- Measurement Studio 8.1 or later for Visual Studio 2005 or Measurement Studio 8.5 or later for Visual Studio 2008

### Writing an array of data to the server

1. Select **Start>All Programs>Microsoft Visual Studio 2005>Microsoft Visual Studio 2005** or **Start>All Programs>Microsoft Visual Studio 2008>Microsoft Visual Studio 2008**.
2. Select **File>New>Project**. The New Project dialog box launches.



3. In the Project Types pane, select **Visual C#** or **Visual Basic**, depending on which language you want to create the project in.
4. In the Templates pane, select **Console Application**. Specify `NetworkVariableWriter` for **Name** and specify a **Location** of your choice.
5. Click **OK**.
6. Select **Measurement Studio>Add/Remove .NET Class Libraries**. The Measurement Studio Add/Remove Class Libraries Wizard launches. You use this wizard to add Measurement Studio components to your project.

7. Select **NetworkVariable Communication Library**. Click **Finish**.8. In `Program.cs`, add the following code to write an array of data to the server:

```
[VB.NET]
Imports NationalInstruments.NetworkVariable
Imports System.Threading
Module Module1
Private Function GenerateDoubleArray(ByVal phase As Double) As Double()
    Dim values(999) As Double
    Dim x As Integer
    For x = 0 To 999
        values(x) = Math.Sin((2 * Math.PI * x) / 1000) + phase) * 2
    Next x
    Return values
End Function
Sub Main()
    Const location As String = "\\localhost\system\double"
    Dim bufferedWriter As NetworkVariableBufferedWriter(Of Double()) = New
NetworkVariableBufferedWriter(Of Double())(location)
    bufferedWriter.Connect()
```

```

Dim phase As Integer = 0
While (True)
Dim values As Double() = GenerateDoubleArray(phase)
Console.WriteLine("Writing Array")
bufferedWriter.WriteValue(values)
Thread.Sleep(500)
phase = phase + 1
End While
End Sub
End Module

[C#]
using System;
using System.Collections.Generic;
using System.Text;
using System.Threading;
using NationalInstruments.NetworkVariable;
namespace NetworkVariableWriter
{
class Program
{
private static double[] GenerateDoubleArray(double phase)
{
double[] values = new double[1000];
for (int x = 0; x < 1000; x++)
values[x] = Math.Sin(((2 * Math.PI * x) / 1000) + phase) * 2;
return values;
}
static void Main(string[] args)
{
const string Location = @"\\localhost\system\double";
NetworkVariableBufferedWriter<double[]> bufferedWrite = new
NetworkVariableBufferedWriter<double[]>(Location);
bufferedWrite.Connect();
int phase = 0;
while (true)
{
double[] value = GenerateDoubleArray(phase);
Console.WriteLine("Writing array");
bufferedWrite.WriteValue(value);
Thread.Sleep(500);
phase++;
}
}
}

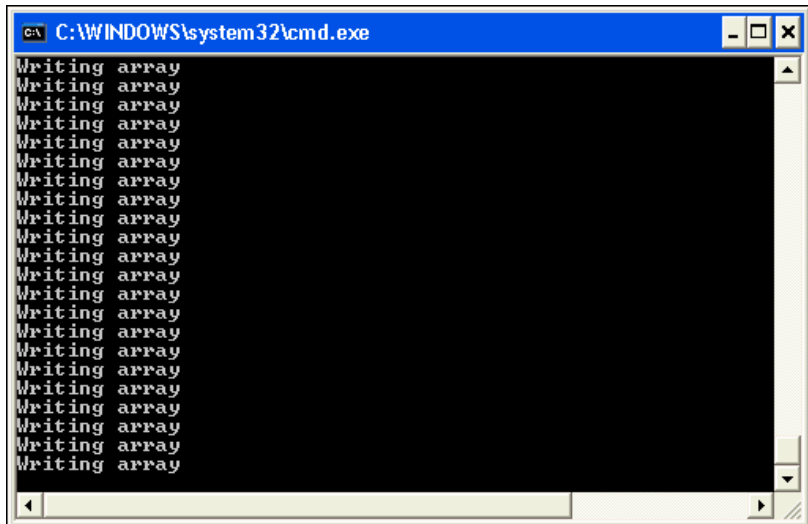
```

```
}  
}
```



**Note** You should choose the appropriate code depending on whether you created a VB or C# project.

9. Select **Debug»Start Without Debugging** to run the application.

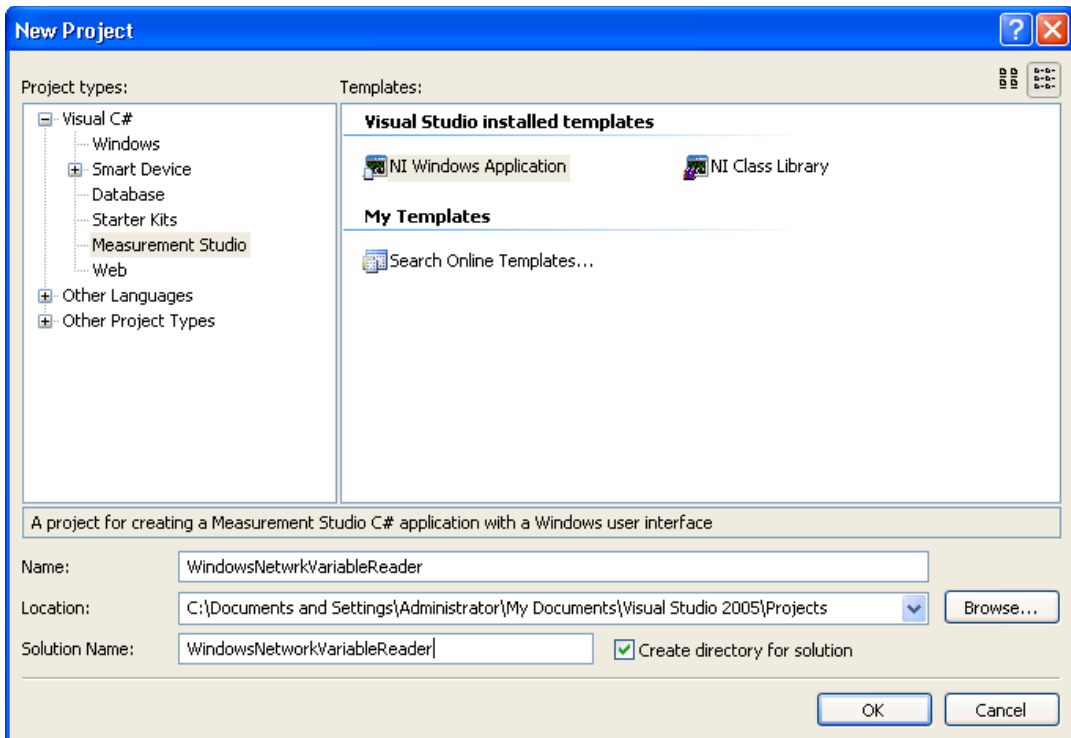


```
C:\WINDOWS\system32\cmd.exe  
Writing array  
Writing array  
Writing array  
Writing array  
Writing array  
Writing array  
Writing array  
Writing array  
Writing array  
Writing array  
Writing array  
Writing array  
Writing array  
Writing array  
Writing array  
Writing array  
Writing array  
Writing array  
Writing array  
Writing array
```

10. Minimize the console, but keep the application running.

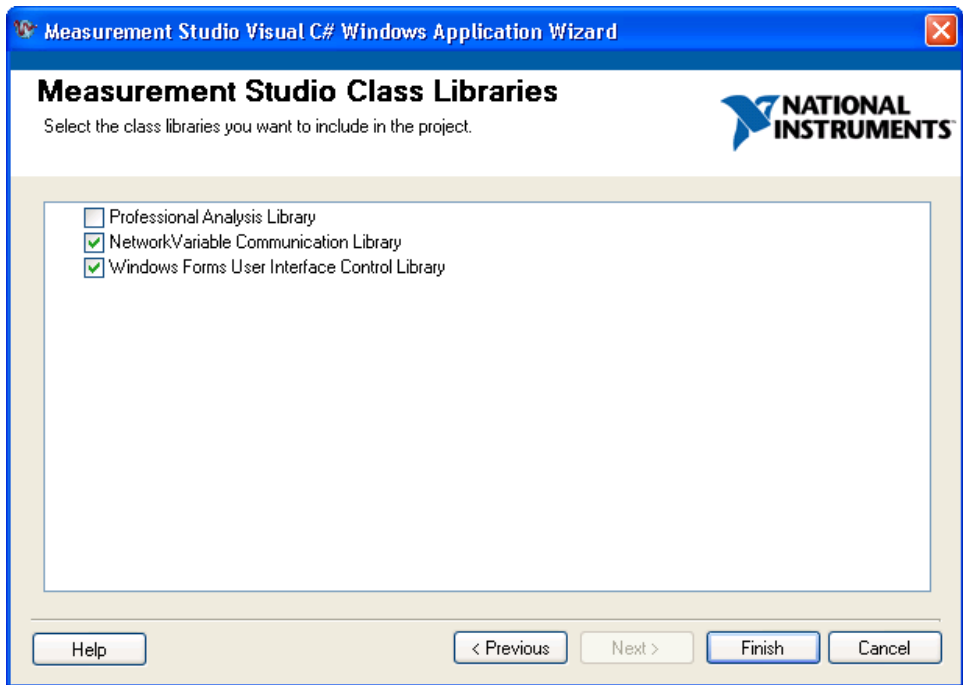
## Setting up a Windows Forms project

1. Select **Start»All Programs»Microsoft Visual Studio 2005»Microsoft Visual Studio 2005** or **Start»All Programs»Microsoft Visual Studio 2008»Microsoft Visual Studio 2008**.
2. Select **File»New»Project**. The New Project dialog box launches.



3. In the Project types pane, select **Measurement Studio** under **Visual C#** or **Visual Basic**, depending on which language you want to create the project in.
4. In the Templates pane, select **NI Windows Application**. Name the project `WindowsNetworkVariableReader` and specify a Location you wish to save to project by clicking **Browse** and navigating to a directory of your choice.
5. Click **OK**. The Measurement Studio Application Wizard launches.

6. Select **Network Variable Communication Library** and **Windows Forms User Interface Control Library**.



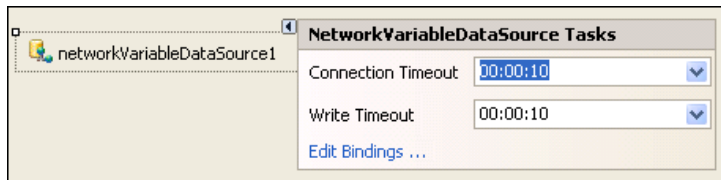
**Tip** If you are working with an existing project, you can access the Add/Remove Class Libraries dialog box by selecting **Measurement Studio»Add/Remove Class Libraries Wizard**.

7. Click **Finish** to display `Form1` in the Windows Forms Designer.

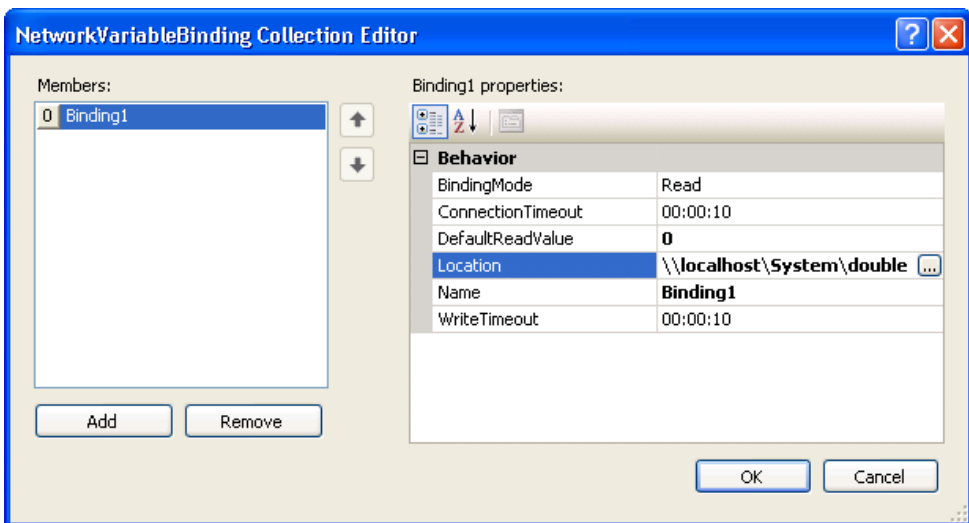
#### **Configuring the network variable data source control**

1. Select **View»Toolbox** to display the Toolbox. The toolbox contains components and controls that you can add to your project.
2. Expand the **Measurement Studio** group on the Toolbox.

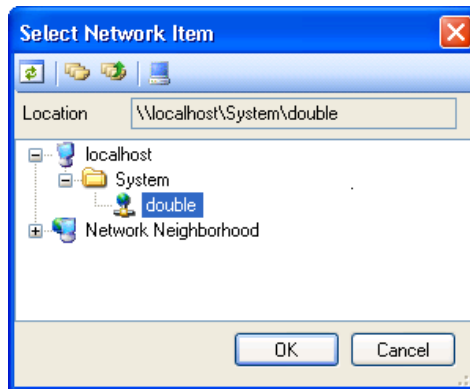
3. Select the `NetworkVariableDataSource` control in the toolbox and drag and drop it on the form. The `NationalInstruments.NetworkVariable.WindowsForms.NetworkVariableDataSource` control is a data source control with functionality similar to `System.Web.UI.WebControls.ObjectDataSource` and `System.Web.UI.WebControls.SqlDataSource` in the .NET Framework. The `NationalInstruments.NetworkVariable.WindowsForms.NetworkVariableDataSource` control encapsulates `NationalInstruments.NetworkVariable` functionality.
4. In the `NetworkVariableDataSource` smart tag, select **Edit Bindings** to launch the `NetworkVariableBinding Collection Editor` dialog box.



5. Select **Add** to create a connection with the underlying network variable, You can use the `NetworkVariableBinding Collection Editor` to configure the binding properties. Enter **0** as the **DefaultRead Value**.



- For the **Location**, browse to the `\\localhost\System\double` location in the Select Network Item dialog box.

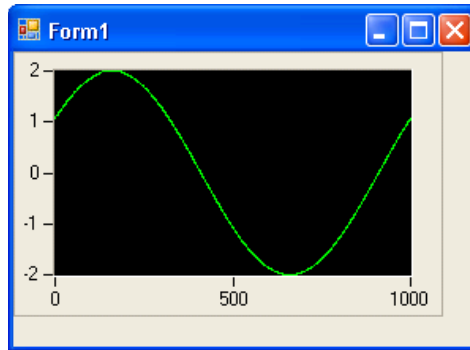


- Click **OK** to return to the NetworkVariableBinding Collection Editor dialog box.
- After you configure the binding properties, click **OK** to return to the Windows Forms Designer.

### Displaying the array of data on a Windows form

- Select **WaveformGraph** in the Toolbox and drag and drop it on the form.
- Right-click the waveform graph and select **Properties** to display the Properties window for the graph. You can configure the properties of the control in the Properties window.
- Expand the **Data Bindings** group in the Properties window. Select **Other Data Sources»Form 1 List Instances»networkVariableDataSource1»Binding1** from the **Binding Data** drop-down list. This will bind the waveform graph to the network variable that you are writing to in the console application. The waveform graph will then read and display the data being written to the network variable.
- Select **File»Save Form1** to save your application.

5. Select **Debug»Start Without Debugging** to run the application. The waveform graph displays the array of data.



## Walkthrough: Creating a Measurement Studio Application with Web Forms Controls and Network Variable

---

Measurement Studio includes user interface controls, such as a waveform graph control, and network variable functionality to transfer live measurement data between applications over the network. This walkthrough is designed to help you learn how to add network variable functionality to a Web Forms application by taking you through the following steps:

- **Writing an array of data to the server**—Using `NationalInstruments.NetworkVariable.NetworkVariableBufferedWriter<TValue>`, you will create and run a console application that writes an array of values to the server.
- **Setting up a Web Forms project**—Using the Measurement Studio Application Wizard, you will *create a new project* that references the Measurement Studio Network Variable class library and Web Forms controls.
- **Configuring the network variable data source control**—Using the Toolbox and the `NationalInstruments.NetworkVariable.WebForms.NetworkVariableDataSource` smart tag, you will add and configure a data source control to your application.

- **Displaying the array of data on a Web page**—Using the Toolbox, you will add and configure an `NationalInstruments.UI.WebForms.AutoRefresh` control and a `NationalInstruments.UI.WebForms.WaveformGraph` control to display the data.

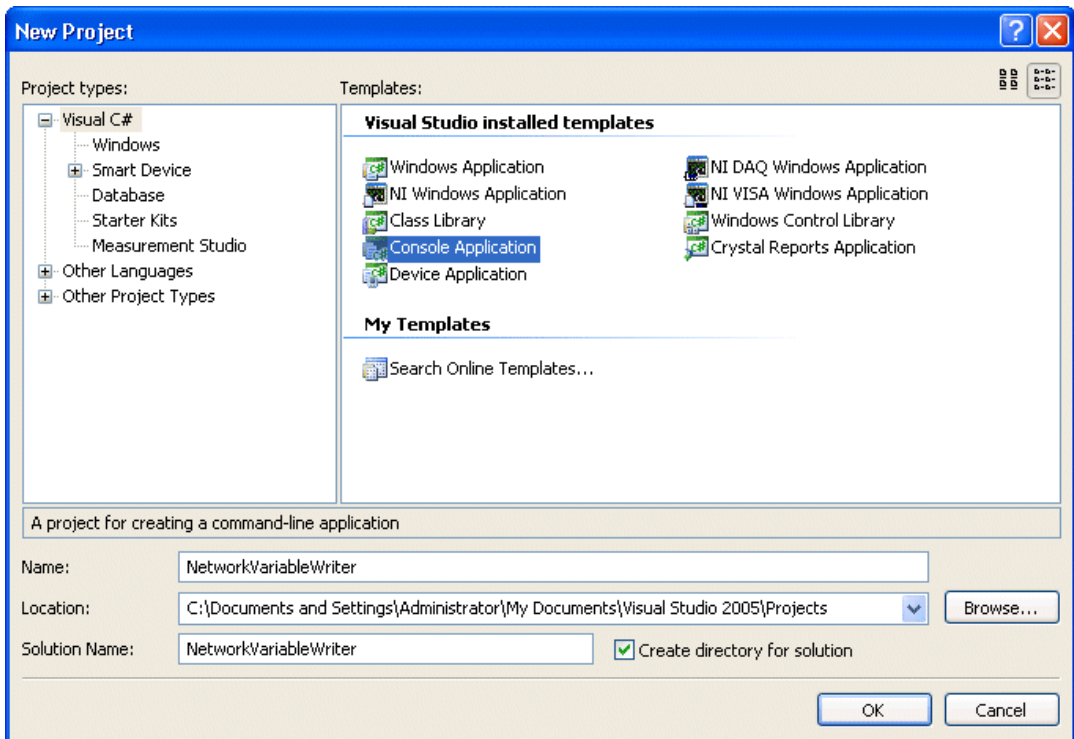
### Before you begin

The following components are required to complete this walkthrough:

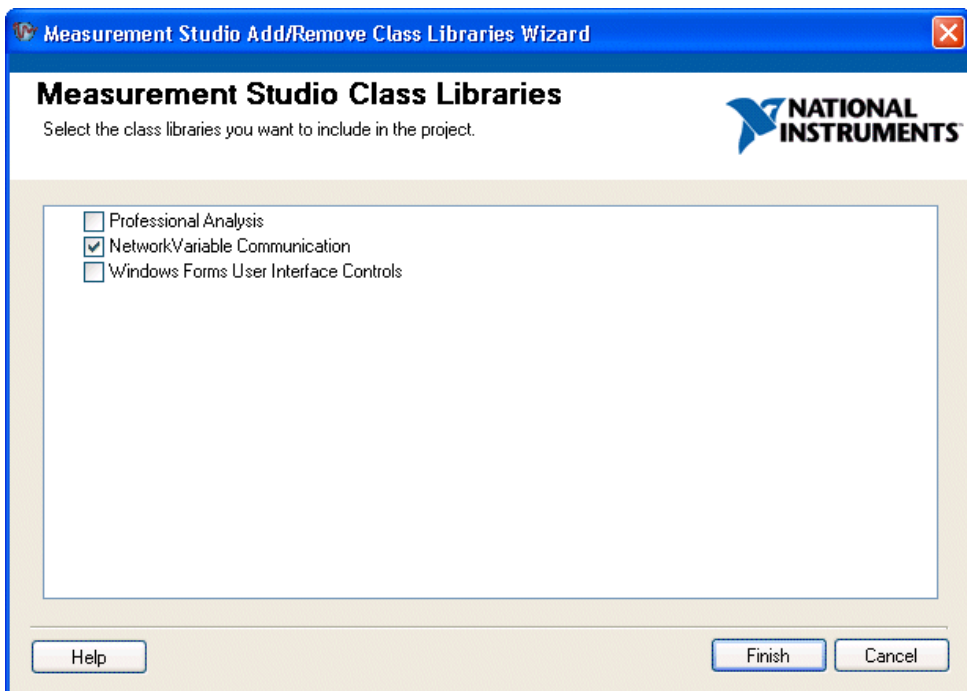
- Microsoft Visual Studio 2005 or Visual Studio 2008
- Measurement Studio 8.0.1 or later for Visual Studio 2005 or Measurement Studio 8.5 or later for Visual Studio 2008

### Writing an array of data to the server

1. Select **Start»All Programs»Microsoft Visual Studio 2005»Microsoft Visual Studio 2005** or **Start»All Programs»Microsoft Visual Studio 2008»Microsoft Visual Studio 2008**.
2. Select **File»New»Project**. The New Project dialog launches.



3. In the Project Types pane, select **Visual C#** or **Visual Basic**, depending on which language you want to create the project in.
4. In the Templates pane, select **Console Application**. Specify `NetworkVariableWriter` for **Name** and specify a **Location** of your choice.
5. Click **OK**.
6. Select **Measurement Studio»Add/Remove .NET Class Libraries**. The Measurement Studio Add/Remove Class Libraries Wizard launches. You use this wizard to add Measurement Studio components to your project.
7. Select **NetworkVariable Communication Library**. Click **Finish**.



8. In `Program.cs`, add the following code to write an array of data to the server:

```
[VB.NET]
Imports NationalInstruments.NetworkVariable
Imports System.Threading
Module Module1
Private Function GenerateDoubleArray(ByVal phase As Double) As Double()
    Dim values(999) As Double
    Dim x As Integer
    For x = 0 To 999
        values(x) = Math.Sin(((2 * Math.PI * x) / 1000) + phase) * 2
    Next x
    Return values
End Function
Sub Main()
    Const location As String = "\\localhost\system\double"
    Dim bufferedWriter As NetworkVariableBufferedWriter(Of Double()) = New
NetworkVariableBufferedWriter(Of Double())(location)
    bufferedWriter.Connect()
    Dim phase As Integer = 0
    While (True)
        Dim values As Double() = GenerateDoubleArray(phase)
        Console.WriteLine("Writing Array")
        bufferedWriter.WriteValue(values)
        Thread.Sleep(500)
        phase = phase + 1
    End While
End Sub
End Module

[C#]
using System;
using System.Threading;
using NationalInstruments.NetworkVariable;
namespace NetworkVariableWriter
{
class Program
{
    private static double[] GenerateDoubleArray(double phase)
    {
        double[] values = new double[1000];
        for (int x = 0; x < 1000; x++)
            values[x] = Math.Sin(((2 * Math.PI * x) / 1000) + phase) * 2;
    }
}
```

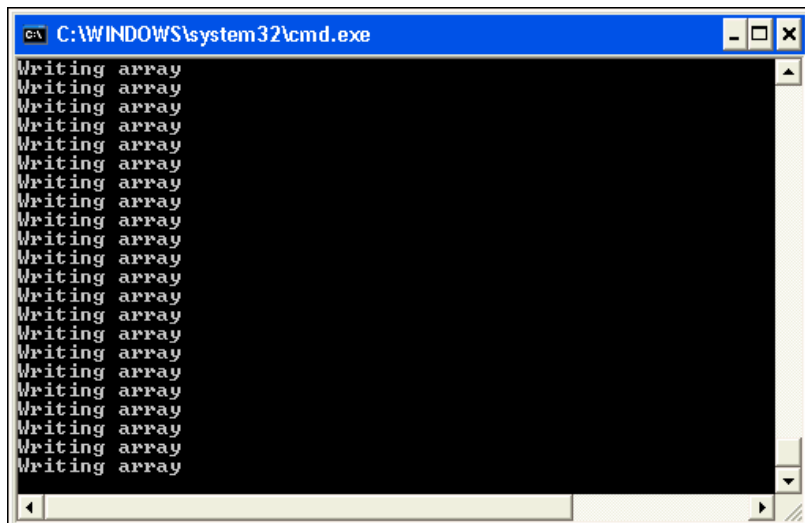
```

        return values;
    }

    static void Main(string[] args)
    {
        const string Location = @"\\localhost\system\double";
        NetworkVariableBufferedWriter<double[]> bufferedWriter = new
NetworkVariableBufferedWriter<double[]>(Location);
        bufferedWriter.Connect();
        int phase = 0;
        while (true)
        {
            double[] value = GenerateDoubleArray(phase);
            Console.WriteLine("Writing array");
            bufferedWriter.WriteValue(value);
            Thread.Sleep(500);
            phase++;
        }
    }
}
}

```

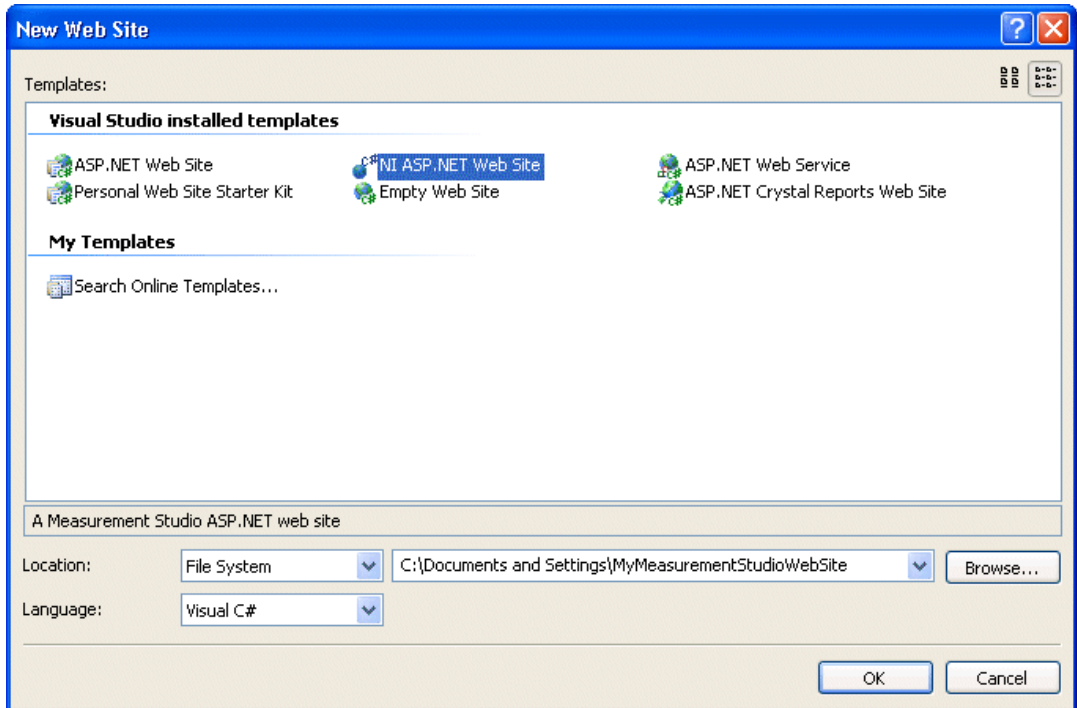
9. Select **Debug>Start Without Debugging** to run the application.



10. Minimize the console application, but keep the application running.

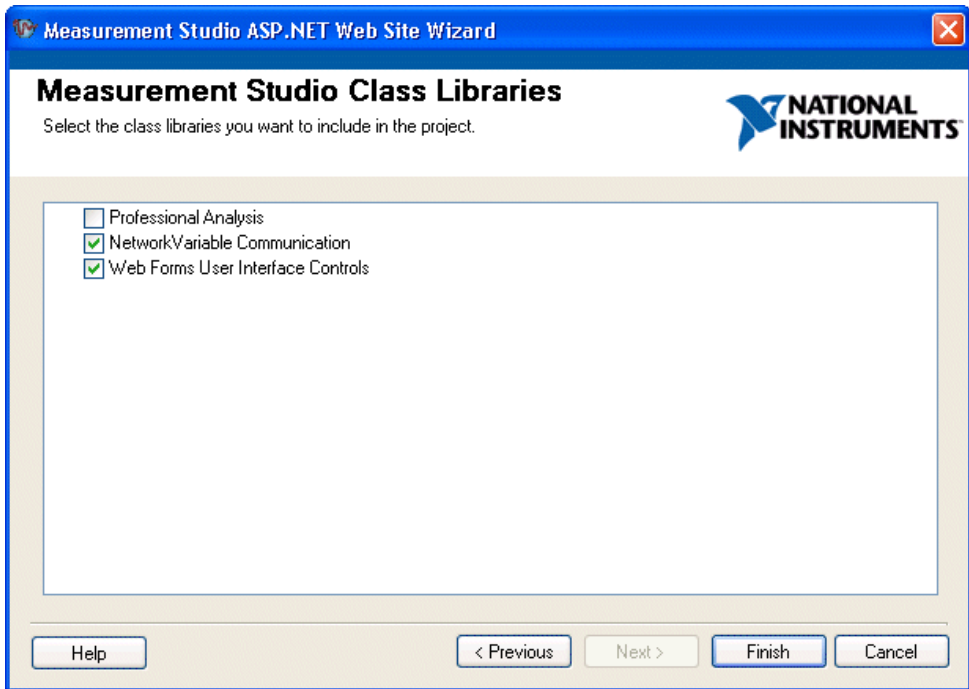
## Setting up a Web Forms project

1. Select **Start»All Programs»Microsoft Visual Studio 2005»Microsoft Visual Studio 2005** or **Start»All Programs»Microsoft Visual Studio 2008»Microsoft Visual Studio 2008**.
2. Select **File»New»Web Site**. The New Web Site dialog box launches.



3. In the Templates pane, select **NI ASP.NET Web Site**. Select **File System** for Location and specify a file path of your choice.
4. Use the drop-down box to select **Visual C#** or **Visual Basic**, depending on which language you want to create the project in.
5. Click **OK**. The Measurement Studio ASP.NET Web Site Wizard launches.

6. Select **Network Variable Communication Library** and **Web Forms User Interface Control Library**.

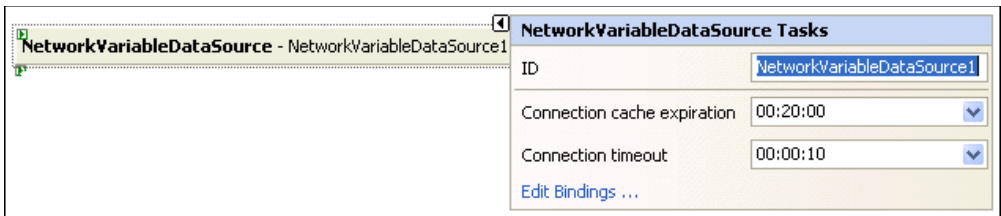


**Tip** If you are working with an existing project, you can access the Add/Remove Class Libraries dialog box by selecting **Measurement Studio»Add/Remove Class Libraries Wizard**.

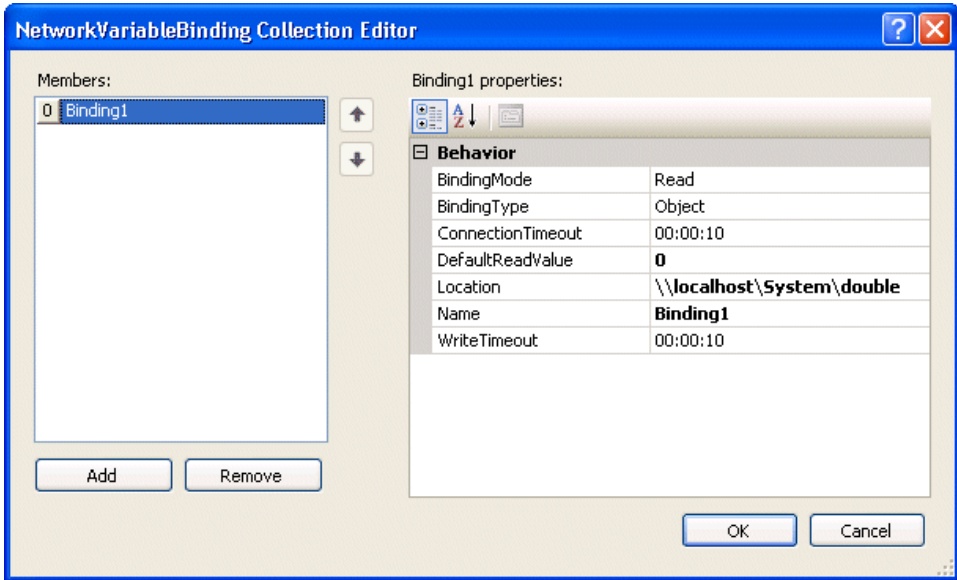
7. Click **Finish** to display `Default.aspx` in the Web Forms Designer.
8. You can rename the title of your Web page. Click inside the `<title>` tag and rename the title to **Measurement Studio Network Variable and Web Forms Controls Walkthrough**.

### Configuring the network variable data source control

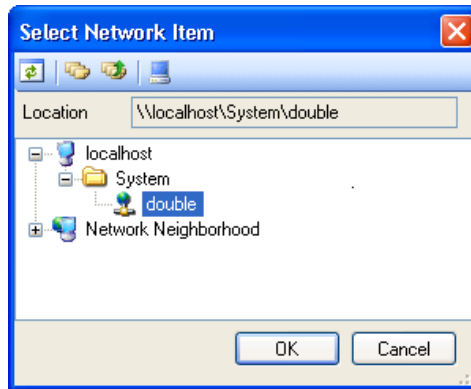
1. Click **Design** in the lower left corner to switch from Source View to Design View.
2. Select **View»Toolbox** to display the Toolbox. The toolbox contains components and controls that you can add to your project.
3. Expand the **Measurement Studio** group on the Toolbox.
4. Select the `NetworkVariableDataSource` control in the toolbox and drag and drop it on the form. The `NationalInstruments.NetworkVariable.WebForms.NetworkVariableDataSource` control is a data source control with functionality similar to `System.Web.UI.WebControls.ObjectDataSource` and `System.Web.UI.WebControls.SqlDataSource` in the .NET Framework. The `NationalInstruments.NetworkVariable.WebForms.NetworkVariableDataSource` control encapsulates `NationalInstruments.NetworkVariable` functionality.
5. In the `NetworkVariableDataSource` smart tag, select **Edit Bindings** to launch the `NetworkVariableBinding` Collection Editor dialog box.

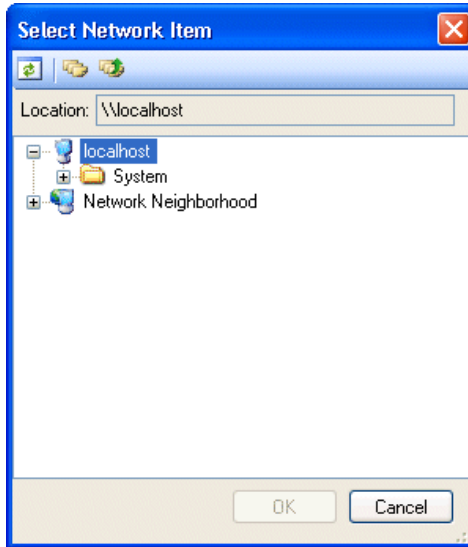


6. Select **Add**. You add a binding to create a connection with the underlying network variable, and you use the `NetworkVariableBinding` Collection Editor to configure the binding properties. Select **Object** for the `BindingType`. You select **Object** because this walkthrough binds to `NationalInstruments.UI.WebForms.WaveformGraph.BindingData`. Enter **0** as the **DefaultReadValue**.



7. Browse to the \\localhost\System\double location in the Select Network Item dialog box.

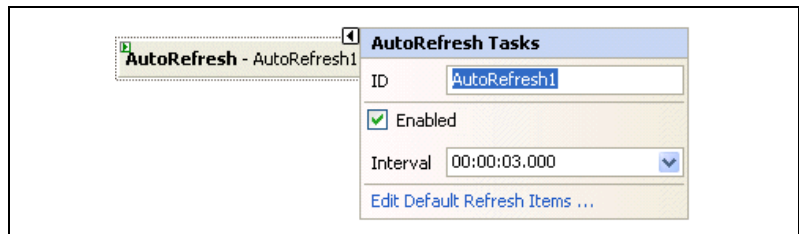




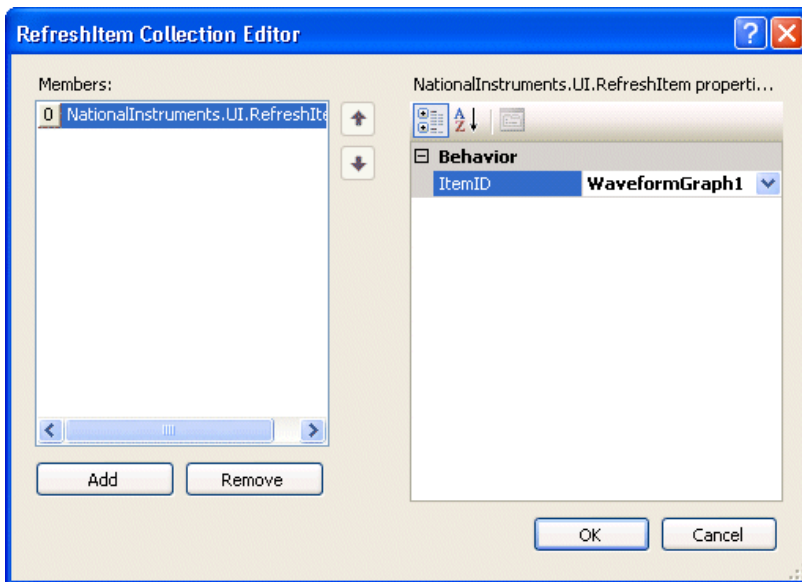
8. Click **OK** to return to the NetworkVariableBinding Collection Editor dialog box.
9. After you configure the binding properties, click **OK** to return to the ASP.NET Designer.

### Displaying the array of data on a Web page

1. Select **WaveformGraph** in the Toolbox and drag and drop it on the form.
2. Select **AutoRefresh** in the Toolbox and drag and drop it on the form.
3. In the AutoRefresh smart tag, check **Enabled**. Select **Edit Default Refresh Items** to launch the RefreshItem Collection Editor dialog box.



4. Select **Add**. Select **WaveformGraph1** for the ItemID and click **OK**.



5. Double-click the AutoRefresh control. Add the following code to the AutoRefresh event handler to bind the waveform graph control to the network variable data source control:

[VB.NET]

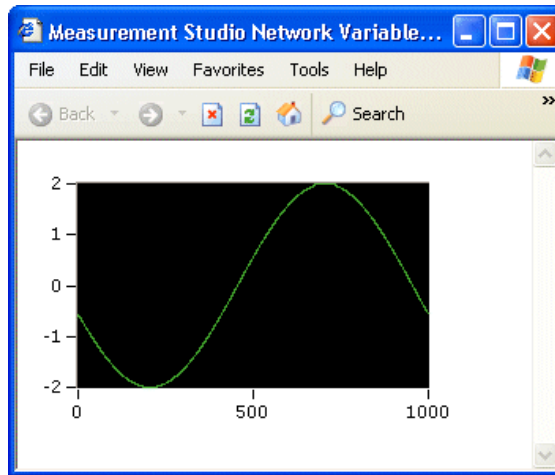
```
WaveformGraph1.BindingData =
NetworkVariableDataSource1.Bindings(0).GetValue()
```

[C#]

```
WaveformGraph1.BindingData =
NetworkVariableDataSource1.Bindings[0].GetValue();
```

6. Select **File»Save Default.aspx** to save your application.

7. Select **Debug»Start Without Debugging** to run the application. The waveform graph displays the array of data.



**Note** You can also use the FormView control to bind to `NetworkVariableDataSource`. Refer to *Using the Measurement Studio Network Variable Data Source in Web Forms* for more information.

## Walkthrough: Creating a Measurement Studio Measurement Computing DAQ Application

Measurement Studio includes class library and application templates that you can use to quickly create Measurement Computing DAQ applications with Visual Basic .NET and Visual C#.

Measurement Studio Measurement Computing Edition includes user interface controls, such as a meter control, and Measurement Computing DAQ functionality, such as analog input and digital I/O. This walkthrough is designed to help you learn how to add Measurement Computing DAQ functionality to a Windows Forms application by taking you through the following steps:

- **Setting up the project**—Using the Visual Studio New Project dialog box, you will create a new project that references the Measurement Studio Measurement Computing DAQ class library and Windows Forms controls.

- **Adding user interface controls to the project**—Using the Toolbox and the Properties window, you will add and configure user interface controls, including a button and meter.
- **Generating and displaying the data**—Using `MccDaq.MccBoard.AIn` and `MccDaq.MccBoard.ToEngUnits`, you will read a raw data point from a channel on a Measurement Computing device, convert the data point to volts, and show the value on a meter.

### Before You Begin

The following components are required to complete this walkthrough:

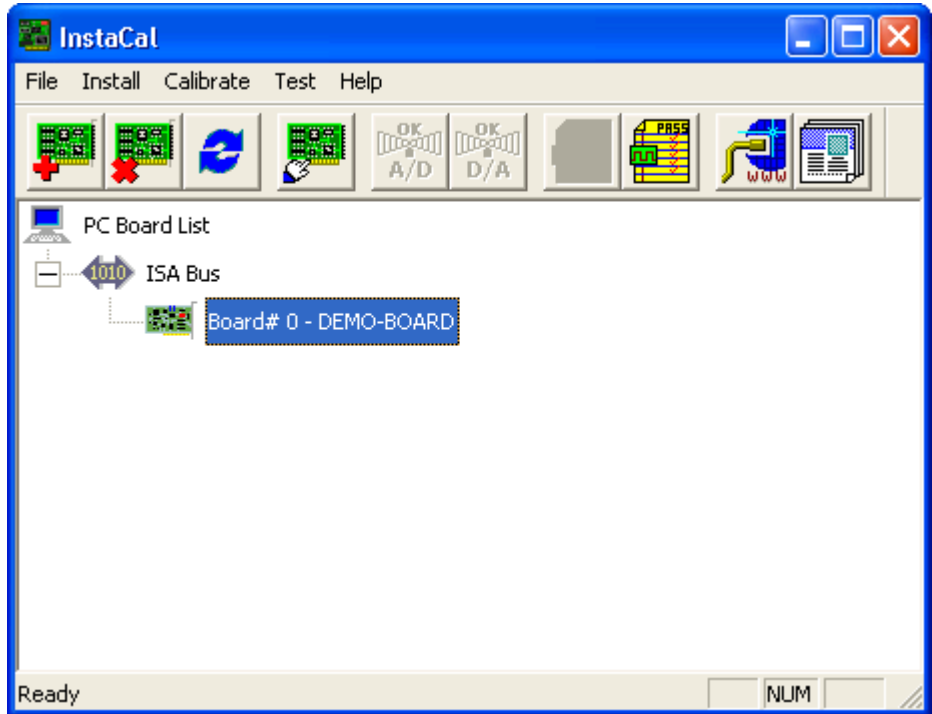
- Microsoft Visual Studio 2005 or Microsoft Visual Studio 2008
- Measurement Studio Measurement Computing Edition
- *InstaCal/Universal Library*
- Measurement Computing DAQ device or DEMO-BOARD simulated DAQ device



**Note** For information about installing and configuring your Measurement Computing DAQ device, refer to the *Quick Start Guide* that ships with your device. Alternately, you can use the DEMO-BOARD simulated DAQ device to complete this walkthrough.

### Setting up the DEMO-BOARD simulated DAQ device

1. Run *InstaCal* by selecting **Start»All Programs»Measurement Computing»InstaCal**.
2. Right-click on **PC Board List**, and select **Add Board** from the popup menu. The **Board Selection List** dialog opens.
3. Select the **ISA** tab, scroll down to select **DEMO-BOARD**, and then click on the **Add** button. The DEMO-BOARD has been added to *InstaCal*'s main form.



4. Close *InstaCal*.

### Setting up the project

1. Select **Start»All Programs»Microsoft Visual Studio 2005»Microsoft Visual Studio 2005** or **Start»All Programs»Microsoft Visual Studio 2008»Microsoft Visual Studio 2008**.
2. Select **File»New»Project**. The New Project dialog box launches.
3. In the Project Types pane, expand the **Visual Basic** or **Visual C#** folder, depending on which language you want to create the project in, and then select **Measurement Studio**.
4. In the Templates pane, select **NI Windows Application**. Specify `MyMCCDAQProject` for **Name** and specify a **Location** of your choice.
5. Click **OK**. The Measurement Studio Application Wizard launches.
6. Select **Universal Library** and **Windows Forms User Interface Control Library**. When you select these libraries, the Measurement Studio Application Wizard automatically adds references to the appropriate class libraries.



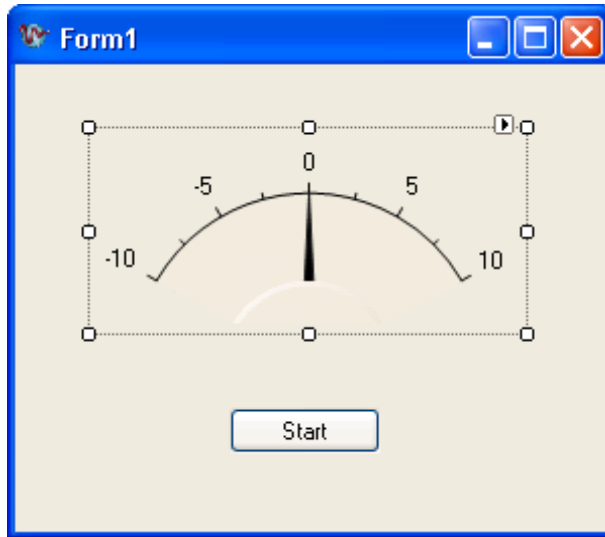
**Tip** If you are working with an existing project, you can access the Add Class Libraries dialog box by selecting **Measurement Studio»Add/Remove Class Libraries Wizard**.

7. Click **Finish** to display `Form1` in the Windows Forms Designer.

#### **Adding user interface controls to the project**

1. Select **View»Toolbox** to display the Toolbox. The Toolbox contains components and controls that you can add to your project.
2. Select the **All Windows Forms** tab. The All Windows Forms tab contains controls and components included in the `System.Windows.Forms` namespace.
3. Select the **Button** control and drag and drop it onto the form.
4. Right-click the button and select **Properties** to display the Properties window. You configure the properties of the control in the Properties window.
5. The Text property will be highlighted. Type `start` for the button text.
6. Select the **Measurement Studio Tools** tab on the Toolbox.
7. Select the **Meter** control and drag and drop it onto the form.
8. Right-click the meter and select **Properties** to display the Properties window.
9. Set the `CoercionIntervalBase` property for the meter to `-10`.
10. Set the Range property for the meter with the drop-down Range type editor. Type `-10` for the minimum value. Leave the default of `10` for the maximum value.

The following screenshot shows Form1 with the user controls.



### Generating and displaying the data

1. Double-click on Form1 to display the Form1 code.
2. Add the following code to declare a new Measurement Computing board object. To move to Code View, select **View»Code**. Add the code below the Form1 class definition.

[VB.NET]

```
' Declare a new Measurement Computing board object that uses board 0
Private DaqBoard As MccDaq.MccBoard
```

[C#]

```
// Declare a new Measurement Computing board object that uses board 0
private MccDaq.MccBoard daqBoard;
```

3. Add the following code to the constructor to instantiate a new Measurement Computing board object.

[VB.NET]

```
' Instantiate the board object using board # 0
DaqBoard = New MccBoard(0)
```

[C#]

```
// Instantiate the board object using board # 0
daqBoard = new MccDaq.MccBoard(0);
```

4. Double-click the **Start** button to display the Start button click code.
5. Add the following code to read a raw data point from a specified channel on the Measurement Computing device, convert the data to volts, and display the value on the meter.

[VB.NET]

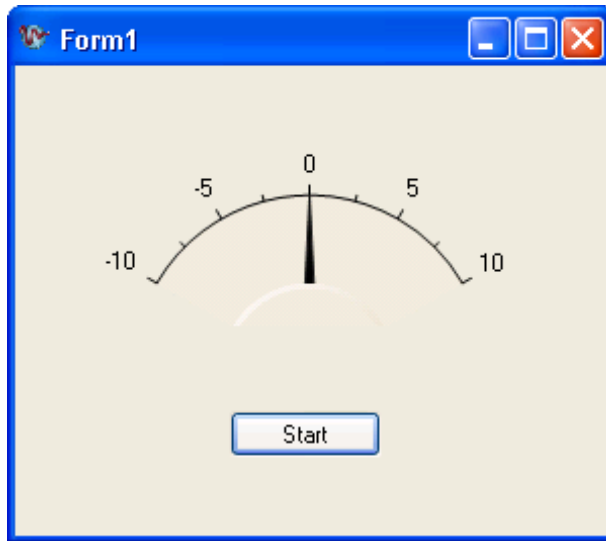
```
'Set channel, range, raw value, and volt variables.
Dim Channel As Integer = 0
Dim Range As MccDaq.Range = MccDaq.Range.Bip10Volts
Dim RawValue As Short = 0
Dim Volts As Single = 0.0F
' Perform analog input operation with Measurement Computing board,
' channel, and range, and return raw value.
DaqBoard.AIn(Channel, Range, RawValue)
' Convert raw value to engineering units.
DaqBoard.ToEngUnits(Range, RawValue, Volts)
' Display value on meter.
Meter1.Value = Volts
```

[C#]

```
// Set channel, range, raw value, and volt variables.
int channel = 0;
MccDaq.Range range = MccDaq.Range.Bip10Volts;
ushort rawValue = 0;
float volts = 0.0f;
// Perform analog input operation with Measurement Computing board,
// channel, and range, and return raw value.
daqBoard.AIn(channel, range, out rawValue);
// Convert raw value to engineering units.
daqBoard.ToEngUnits(range, rawValue, out volts);
// Display value on meter.
meter1.Value = volts;
```

6. Select **File»Save Form1.cs** to save your application.
7. Select **Debug»Start Without Debugging** to run the application.

8. After your program builds and runs, click **Start**. Notice each time you click the Start button, the meter shows the acquired value. The following screenshot shows Form1 with the meter displaying the acquired value.



## Walkthrough: Creating a Measurement Studio MccDaq Scan Components Application

---

Measurement Studio includes a component library and application templates that you can use to quickly create MccDaq Components applications with Visual Basic .NET and Visual C#.

Measurement Studio Measurement Computing Edition includes user interface controls, such as a waveform graph control, and MccDaq scan components that perform analog input scans and analog output scans. This walkthrough is designed to help you learn how to add analog scan and presentation functionality to a Windows Forms application by taking you through the following steps:

- **Setting up the project**—Using the Visual Studio New Project dialog box, you will create a new project that references the Measurement Studio MccDaq Scan Components library and Windows Forms controls.
- **Adding user interface controls to the project**—Using the Toolbox and the Properties window, you will add and configure user interface

controls and `MccDaq.Scan` components, including a button, waveform graph, and an `AiScan` component.

- **Generating and displaying the data**—Using the `MccDaq.Scan` components, you will read data from a channel on a Measurement Computing device, convert the data object to an array, and show the value on a waveform graph.

### Before You Begin

The following components are required to complete this walkthrough:

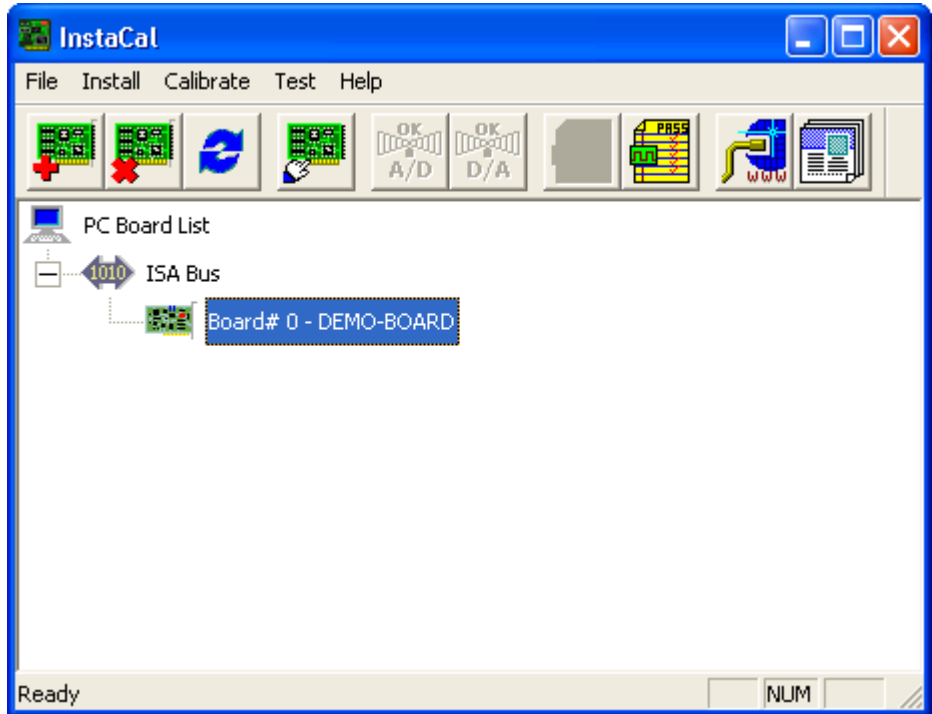
- Microsoft Visual Studio 2005 or Microsoft Visual Studio 2008
- Measurement Studio Measurement Computing Edition
- MccDaq Scan Components
- Measurement Computing DAQ device or DEMO-BOARD simulated DAQ device



**Note** For information about installing and configuring your Measurement Computing DAQ device, refer to the *Quick Start Guide* that ships with your device. You can also use the DEMO-BOARD simulated DAQ device to complete this walkthrough.

### Setting up the DEMO-BOARD simulated DAQ device

1. Run *InstaCal* by selecting **Start»All Programs»Measurement Computing»InstaCal**.
2. Right-click on **PC Board List**, and select **Add Board** from the popup menu. The **Board Selection List** dialog opens.
3. Select the **ISA** tab, scroll down to select **DEMO-BOARD**, and then click on the **Add** button. The DEMO-BOARD has been added to the *InstaCal* main form.



4. Close *InstaCal*.

### Setting up the project

1. Select **Start»All Programs»Microsoft Visual Studio 2005»Microsoft Visual Studio 2005** or **Start»All Programs»Microsoft Visual Studio 2008»Microsoft Visual Studio 2008**.
2. Select **File»New»Project**. The New Project dialog box launches.
3. In the Project types pane, select the **Visual Basic** or **Visual C#** folder, depending on which language you want to create the project in, and then select **Measurement Studio**.
4. In the Templates pane, select **NI Windows Application**. Specify `MyMCCScanProject` for **Name** and specify a **Location** of your choice.
5. Click **OK**. The Measurement Studio Application Wizard launches.
6. Select **Windows Forms User Interface Control Library**. When you select this library, the Measurement Studio Application Wizard automatically adds references to the appropriate class libraries.



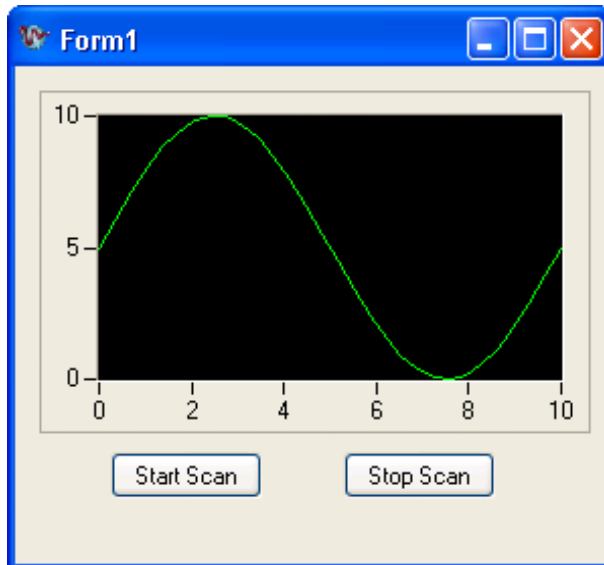
**Tip** If you are working with an existing project, you can access the Add Class Libraries dialog box by selecting **Measurement Studio»Add/Remove Class Libraries Wizard**.

7. Click **Finish** to display `Form1` in the Windows Forms Designer.

### **Adding user interface controls to the project**

1. Select **View»Toolbox** to display the Toolbox. The Toolbox contains components and controls that you can add to your project.
2. Select the **All Windows Forms** tab. The All Windows Forms tab contains controls and components included in the `System.Windows.Forms` namespace.
3. Select the **Button** control and drag and drop it onto the form.
4. Right-click the button and select **Properties** to display the Properties window. You configure the properties of the control in the Properties window.
5. The **Text** property is highlighted. Type `Start Scan` for the button text.
6. Select another button control and drag and drop it onto the form. Type `Stop Scan` for the button text.
7. Select the **Measurement Studio Tools** tab on the Toolbox.
8. Select the **Waveform graph** control and drag and drop it onto the form.
9. Double-click the **AI Scan** component (`aiScan1`) to add it to the component tray beneath the form.
10. Right-click the **AI Scan** component (`aiScan1`) and select **Properties** to display the Properties window.
11. Click on the `ClockRate` property and type `500` for this property setting.

The following screenshot shows Form1 with the user controls.



### Generating and displaying the data

1. Double-click the **Start** button to display the Form1 code.
2. Add the following line of code to start an analog in scan.

```
[VB.NET]
' This starts the scan
AIScan1.Start()

[C#]
// This starts the scan
aiScan1.Start();
```

3. Double-click on the **Stop Scan** button to open the code window.
4. Add the following line of code that stops the analog in scan.

```
[VB.NET]
' This stops the scan
AiScan1.Stop()

[C#]
// This stops the scan
aiScan1.Stop();
```

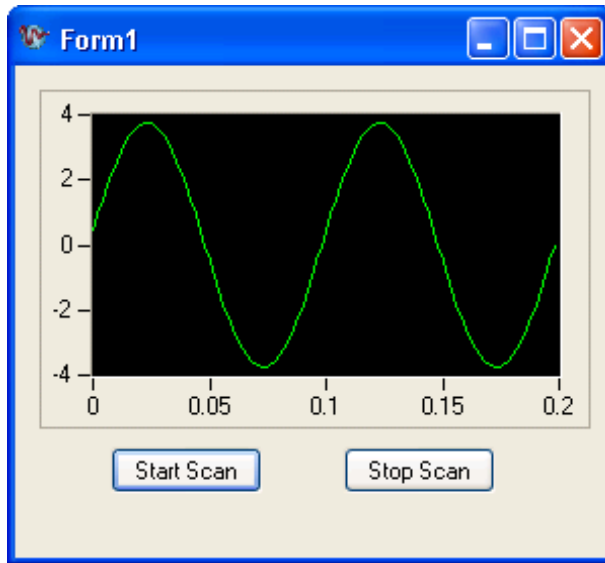
5. Double-click the `AiScan` component in the component tray below the Form Designer and add the following lines of code to the `aiScan1` component to copy the analog data and display a message box if an error occurs.

```
[VB.NET]
'This displays the analog data on a graph
WaveformGraph1.PlotY(AiScan1.GetSingleChannelValues(), 0, _
1.0 / AiScan1.ActualRate)
' This stops the scan and displays the error message
AiScan1.Stop()
MessageBox.Show(AiScan1.Status, "AI Scan Error")

[C#]
// This displays the analog data on a graph
waveformGraph1.PlotY(aiScan1.GetSingleChannelValues(), 0,
1.0 / aiScan1.ActualRate);
// This stops the scan and displays the error message
aiScan1.Stop();
MessageBox.Show(aiScan1.Status, "AI Scan Error");
```

6. Select **File»Save Form1.cs** to save your application.
7. Select **Debug»Start Without Debugging** to run the application.
8. After your program builds and runs, click **Start Scan**.

The following screenshot shows Form1 with the waveform graph displaying the acquired values.



## Walkthrough: Creating a Measurement Studio MCC-488.2 Application

---

Measurement Studio includes a component library and application templates that you can use to quickly create MCC-488.2 applications with Visual Basic .NET and Visual C#.

Measurement Studio Measurement Computing Edition includes user interface controls, such as a waveform graph control, and MCC-488.2 components that read and plot data points from a GPIB device. This walkthrough is designed to help you learn how to add data reading and presentation functionality to a Windows Forms application by taking you through the following steps:

- **Setting up the project**—Using the Visual Studio New Project dialog box, you will create a new project that references the Measurement Studio MCC-488.2 class library and Windows Forms controls.
- **Adding user interface controls to the project**—Using the Toolbox and the Properties window, you will add and configure user interface controls, including a button and waveform graph.

- **Generating and displaying data**—Using `MCC.488.2.Device` and `MCC.488.2.Address`, you will read and plot 100 data points from a GPIB device at the specified address.

### Before You Begin

The following components are required to complete this walkthrough:

- Microsoft Visual Studio 2005 or Microsoft Visual Studio 2008
- Measurement Studio Measurement Computing Edition
- MCC-488.2 Library
- Measurement Computing GPIB Device

### Configuring the GPIB device

1. Select **Start»All Programs»GPIB-488»GPIB Configuration** to configure the MCC GPIB device.
2. Go to the **Advanced** tab and enable the **Assert REN when SC** option.

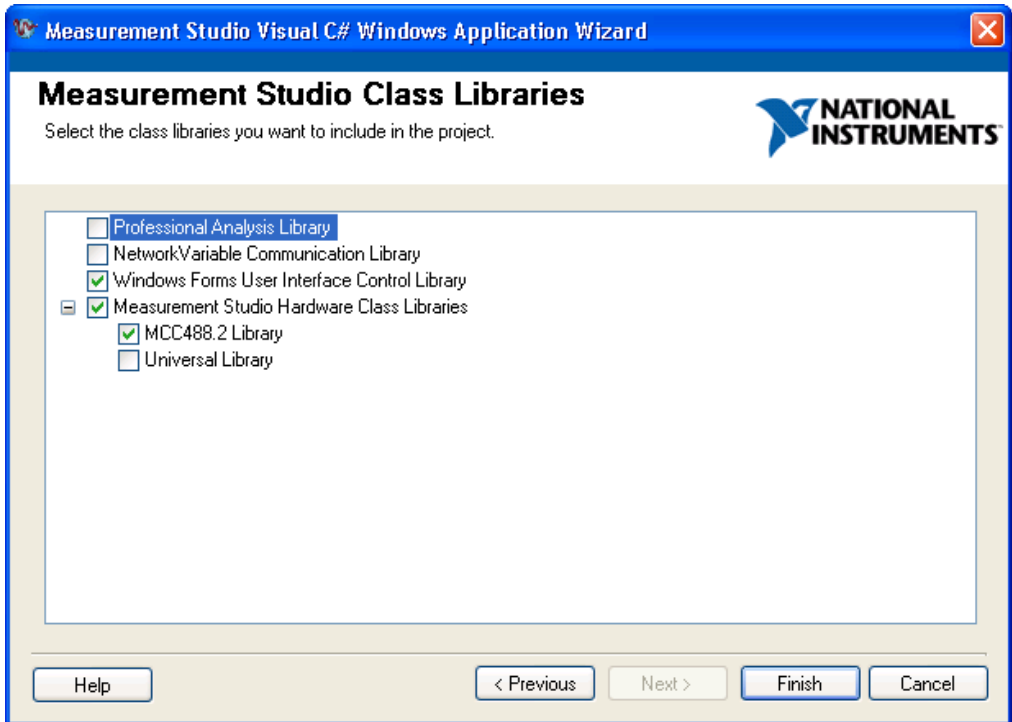
### Setting up the project

1. Select **Start»All Programs»Microsoft Visual Studio 2005»Microsoft Visual Studio 2005** or **Start»All Programs»Microsoft Visual Studio 2008»Microsoft Visual Studio 2008**.
2. Select **File»New»Project**. The New Project dialog box launches.
3. In the Project Types pane, select the **Visual Basic Projects** or **Visual C# Projects** folder, depending on which language you want to create the project in, and then select **Measurement Studio**.
4. In the Templates pane, select **NI Windows Application**. Specify `MyMCCGPIBProject` for **Name** and select a **Location** of your choice.
5. Click **OK**. The Measurement Studio Application Wizard launches.



**Tip** If you are working with an existing project, you can access the Add Class Libraries dialog box by selecting **Measurement Studio»Add/Remove Class Libraries Wizard**.

- In the Application Wizard dialog box, select **Windows Forms User Interface Control Library** and **MCC488.2 Library**. The wizard automatically adds references to the appropriate class libraries and sets up the project for you.

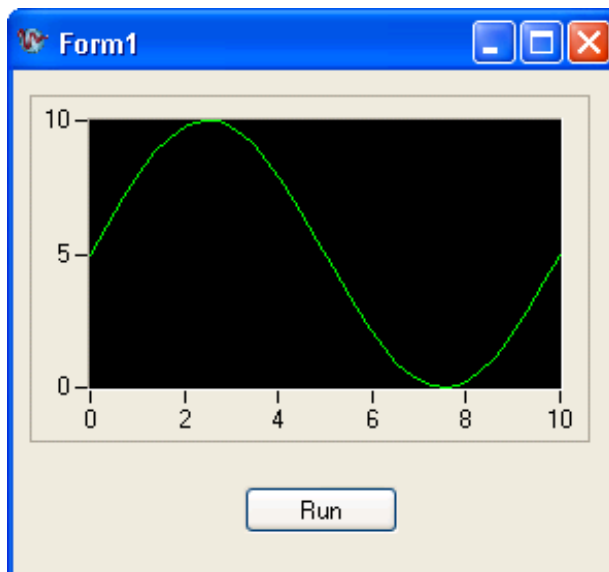


- Click **Finish** to display `Form1` in the Windows Forms Designer.

### Adding user interface controls to the project

- Select **View»Toolbox** to display the Toolbox. The Toolbox contains components and controls that you can add to your project.
- Select the **All Windows Forms** tab. The Windows Forms tab contains controls and components included in the `System.Windows.Forms` namespace.
- Select the **Button** control and drag and drop it onto the form.
- Right-click the button and select **Properties** to display the Properties window. You configure the properties of the control in the Properties window.
- The Text property is highlighted. Type `Run` for the button text.

6. Select the **Measurement Studio** tab on the Toolbox.
7. Select the **WaveformGraph** control and drag and drop it onto the form.
8. Right-click the WaveformGraph and select **Edit YAxes** to display the yAxis properties. Set the **Maximum** and **Minimum** values of the **Range** property to an appropriate range for the input signal.
9. The following screenshot shows Form1 with the user controls.



### Generating and displaying the data

1. Double-click the button control to display the Form1 code, with the cursor inside the click event handler of the button control.
2. Add the following code to read a raw data point from a specified channel on the Measurement Computing device, convert the data to volts, and display the value on the graph.

[VB.NET]

```
Dim I As Integer
Dim WrtString As String = "val?"
Dim RdBufSize As Integer = 100
Dim NlChar As Char = "\n"
Dim NullChar As Char = "\0"
Dim PrimaryAddress As New Address(2)
Dim BoardNum As Integer = 0
' Open a gpib device
Dim Device As New Device(BoardNum, PrimaryAddress)
```

```

' Allocate a buffer to hold the data
Dim Buffer As IntPtr = _
System.Runtime.InteropServices.Marshal.AllocHGlobal(RdBufSize)
' Read and plot 100 samples
For I = 0 To 99
' Write the string (val?) to the Fluke45
Device.Write(WrtString)
' Read the response from the Fluke45
Dim S As String = Device.ReadString(RdBufSize)
' Replace the newline character with a null and
' convert the string to a double
Dim D As Double = Convert.ToDouble(S.Replace(NlChar, NullChar))
'Plot the point
WaveformGraph1.PlotYAppend(D, 1)
Next
System.Runtime.InteropServices.Marshal.FreeHGlobal(Buffer)

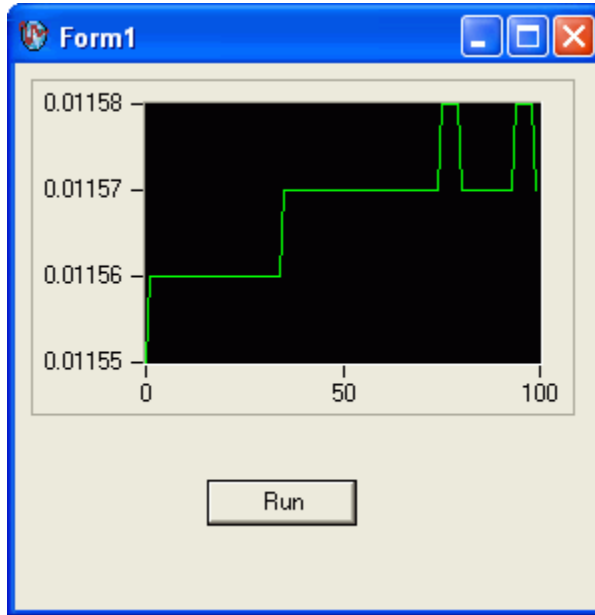
[C#]

string wrtString = "val?";
int rdBufSize = 100;
char nlChar = '\n';
char nullChar = '\0';
Address primaryAddress = new Address(2);
int boardNum = 0;
// open a gpib device
Device device = new Device(boardNum, primaryAddress);
// allocate a buffer to hold the data
IntPtr buffer =
System.Runtime.InteropServices.Marshal.AllocHGlobal(rdBufSize);
// read and plot 100 samples
for (int i = 0; i < 100; i++)
{
// write the string (val?) to the Fluke45
device.Write(wrtString);
// read the response from the Fluke45
string s = device.ReadString(rdBufSize);
// replace the newline character with a null and
// convert the string to a double
double d = Convert.ToDouble(s.Replace(nlChar, nullChar));
// plot the point
waveformGraph1.PlotYAppend(d, 1);
}
System.Runtime.InteropServices.Marshal.FreeHGlobal(buffer);

```

3. Select **File»Save Form1.cs** to save your application.
4. Select **Debug»Start Without Debugging** to run the application.
5. After your program builds and runs, click **Run**. Notice each time you click the Run button, the graph shows the acquired value.

The following screenshot shows Form1 with the graph displaying the acquired value.





---

# Contacting Measurement Computing Corporation

You can reach Measurement Computing Corporation through the following ways:

## **Mail**

Measurement Computing Corporation  
10 Commerce Way  
Suite 1008  
Norton, MA 02766

## **Telephone**

508-946-5100

## **FAX**

508-946-9500

## **Technical Support**

[techsupport@MeasurementComputing.com](mailto:techsupport@MeasurementComputing.com)

## **Sales**

[sales@measurementcomputing.com](mailto:sales@measurementcomputing.com)

## **Other correspondence**

[info@measurementcomputing.com](mailto:info@measurementcomputing.com)

Visit our Web site at [www.measurementcomputing.com](http://www.measurementcomputing.com).

# Glossary

---

## A

analog I/O	Reading or writing data in continuously variable physical quantities, such as voltage or current.
annotate	Adding text, arrows, or shapes to describe or highlight a point or region on a graph.
API	Application Programming Interface. A specification of software functions and their input and return parameters.
array control	An array of Measurement Studio user interface controls that behave as a single unit.
assembly	A collection of one or more files that are versioned and deployed as a unit. An assembly is the primary building block of a .NET Framework application. All managed types and resources are contained within an assembly and are marked either as accessible only within the assembly or as accessible from code in other assemblies.
asynchronous	Function that begins an operation and returns control to the program prior to the completion or termination of the operation.

## B

button	A control used to input or display Boolean information or to initiate an action in a program.
--------	-----------------------------------------------------------------------------------------------

## C

chart	To append new data points to the end of an existing plot over time.
client callback	In Web Forms, page calls back to the server without fully posting back. Callbacks are asynchronous and are accomplished with XML-HTTP. Client callbacks do not include postback data, and they do not force the page to refresh. Client callbacks do require a browser that supports the XML-HTTP protocol.

coercion	Automatic conversion that Measurement Studio controls perform to change the numeric representation of a data element.
complex graph	A control that displays a <code>ComplexDouble</code> data type; the <code>ComplexDouble</code> data type represents a complex number of type <code>Double</code> that is composed of a real part and an imaginary part.
context-sensitive help	Help for dialog boxes, the controls in dialog boxes, and keywords in source code that you can access with the key or a Help button, or by clicking the link that appears in the Dynamic Help window in Visual Studio.
control	Object for entering, displaying, or manipulating data on a user interface.
counter/timer I/O	Reading or writing data based on high-precision timing through a counter or timer. By combining a counter with a highly accurate clock, you can create a wide variety of timing and counting applications, such as monitoring and analyzing digital waveforms and generating complex square waves.
cursor	Flashing rectangle that shows where you may enter text on the screen. If you have a mouse installed, there is a rectangular mouse cursor, or pointer.
cursor label	Text object used to display X and Y coordinates that a cursor crosshair points to on a graph.
<b>D</b>	
DAQ	Data acquisition. Process of acquiring data, typically from A/D or digital input plug-in boards.
DAQ device	A device that acquires or generates data and can contain multiple channels and conversion devices. DAQ devices include plug-in devices which connect to a computer USB port or PCI bus.
device	An instrument or controller you can access as a single entity that controls or monitors real-world I/O points. A device is often connected to a host computer through some type of communication network.
digital I/O	Reading or writing digital representations of data in discrete units (the binary digits 1 and 0). Digital information is either on or off.
digital waveform graph	A control that displays <code>DigitalWaveform</code> data on a Windows Forms or Web Forms user interface; the <code>DigitalWaveform</code> data type represents a set of digital states that are grouped by samples or signals.

distribution	Ability to install programs you develop with Measurement Studio to others working on different computers.
DLL	Dynamic Link Library. A library of functions that link to a program and load at run time rather than being compiled into the program. Loading libraries only when they are needed saves memory in software applications.
DMM	Digital Multimeter. A common measurement instrument that measures resistance, current, and voltage in a wide variety of applications.
downlevel browser	Previous generation Web browser with limited client interaction. <i>See also</i> <a href="#">uplevel browser</a> .
driver	Software that controls a specific hardware device, such as a data acquisition board or GPIB interface board. <i>See also</i> <a href="#">instrument driver</a> .
<b>E</b>	
Ethernet	Standard connection type for networks, where computers are connected by coaxial or twisted-pair cable.
event	Object-generated response to some action or change in state, such as a mouse click or a completed acquisition. The event calls an event procedure that processes the event.
executable	Program file with a <code>.exe</code> extension that you can run independently of the development environment in which it was created.
<b>F</b>	
form	Window or area on the screen on which you place controls and indicators to create the user interface for your program.
front panel	Interactive user interface of a virtual instrument. Modeled after the front panel of physical instruments, it is composed of switches, slides, meters, graphs, charts, gauges, LEDs, and other controls and indicators.
FTP	File Transfer Protocol. Protocol based on TCP/IP to exchange files between computers.

## G

- gauge A control used to input or display numerical data.
- GPIB General Purpose Interface Bus. The standard bus used for controlling electronic instruments with a computer. Also called IEEE 488 bus because it is defined by ANSI/IEEE Standards 488-1978, 488.1-1987, and 488.2-1987.
- graph A 2D or 3D display of one or more plots.

## H

- HTTP HyperText Transfer Protocol. Protocol based on TCP/IP, which is used to download Web pages from an HTTP server to a Web browser.

## I

- IEEE 488 Shortened notation for ANSI/IEEE Standards 488-1978, 488.1-1987, and 488.2-1987. *See also* GPIB.
- indicator A control in read-only mode.
- installer Software program that copies program, system, and other necessary files to computers.
- instrument driver Library of functions to control and use one specific physical instrument. Also a set of functions that adds specific functionality to an application.
- interface Connection between one or more of the following: hardware, software, and the user. For example, hardware interfaces connect two other pieces of hardware.

## K

- knob A control used to input or display numerical data.

**L**

- LED** Light-Emitting Diode. An indicator that emits a light when current passes through it. For example, an LED shows if your computer or printer is turned on.
- legend** A control that displays symbols and descriptions for a specific set of elements of another object, such as the plots or cursors of a graph.

**M**

- matrix** A rectangular array of numbers or mathematical elements that represent the coefficients in a system of linear equations.
- MB** Megabytes of memory.
- MCC-488.2** Driver-level software to control and communicate with Measurement Computing GPIB hardware.
- Measurement Studio** National Instruments software that includes tools to build measurement applications in Visual Basic .NET and Visual C#.
- meter** A control used to input or display numerical data.
- method** Function that performs a specific action on or with an object. The operation of the method often depends on the values of the object properties.

**N**

- numeric edit** A control used to display and edit numeric values.

**O**

- oscilloscope** Measurement instrument widely used in high-speed testing applications, such as telecommunication physical layer testing, video testing, and high-speed digital design verification.

## P

PCI	Peripheral Component Interconnect. High-performance expansion bus architecture commonly found in PCs.
plot	<ol style="list-style-type: none"><li>1. Trace (data line) on a graph representing the data in one row or column of an array.</li><li>2. To display a new set of data while deleting any previous data on the graph.</li></ol>
point	Structure that contains two 16-bit integers that represent horizontal and vertical coordinates.
postback	The process in which a Web page sends data back to the same page on the server.
property	Attribute that defines the appearance or state of an object. The property can be a specific value or another object with its own properties and methods. For example, a value property is the color (property) of a plot (object), while an object property is a specific Y axis (property) on a graph (object). The Y axis itself is another object with properties, such as minimum and maximum values.
property editor	A control used to configure properties for Windows Forms controls at run time.
property pages	Window or dialog box that displays current configuration information and allows users to modify the configuration.

## R

range	Region between the limits within which a quantity is measured, received, or transmitted. The range is expressed by stating the lower and upper range values.
-------	--------------------------------------------------------------------------------------------------------------------------------------------------------------

## S

scalar	Number that a point on a scale can represent. The number is a single value as opposed to an array.
scale	Part of graph, chart, and some numeric controls and indicators that contains a series of marks or points at known intervals to denote units of measure.

scatter graph	A control that displays two-dimensional data on a Windows Forms or Web Forms user interface; displays a graph of X and Y data pairs.
scope	See <a href="#">oscilloscope</a> .
serial	Standard serial bus on a computer used to communicate with instruments. Also known as RS-232.
slide	A control used to input or display numerical data.
slider	Moveable part of a slide control.
smart tag	A glyph attached to a Measurement Studio control or component that exposes commonly performed tasks.
switch	A control used to receive and control Boolean input in an application user interface.
synchronous	Property or operation that begins and returns control to the program only when the operation is complete.

## T

tank	A control used to input or display numerical data.
TCP/IP	Transmission Control Protocol/Internet Protocol. A standard format for transferring data in packets from one computer to another. The two parts of TCP/IP are TCP, which deals with the construction of data packets, and IP, which routes them from computer to computer.
thermometer	A control used to input or display numerical data.

## U

UI	User Interface.
uplevel browser	Recent generation Web browser that supports rich client interaction and functionality. See also <a href="#">downlevel browser</a> .

## **V**

vector                      1D array.

VXI                          VME eXtension for Instrumentation. Instrumentation architecture and bus based on the VME standard. Used in high-end test applications.

## **W**

waveform graph            A control that displays two-dimensional data on a Windows Forms or Web Forms user interface; displays data that is uniformly spaced in one dimension.

# Index

---

## A

- Add/Remove Class Libraries wizard, 3-5
- adding or removing Measurement Studio class libraries, 3-5
- Analysis
  - .NET class library, 2-2
  - Array and Numeric Operations (list), 2-5
  - Curve Fitting (list), 2-5
  - Filters (list), 2-3
  - Linear Algebra (list), 2-4
  - Measurements (list), 2-2
  - Signal Generation (list), 2-2
  - Signal Processing (list), 2-4
  - Statistics (list), 2-6
  - Windowing (list), 2-3
- AutoRefresh control, 2-40

## C

- Common .NET class library, 2-6
- complex graph control, 2-16, 2-32
- conventions used in the manual, *x*
- creating
  - Measurement Studio Application with Web Forms Controls and Analysis in Visual Studio 2005 (walkthrough), 4-11
  - Measurement Studio Application with Web Forms Controls and Network Variable in Visual Studio 2005 (walkthrough), 4-30
  - Measurement Studio Application with Windows Forms Controls and Analysis (walkthrough), 4-2
  - Measurement Studio Application with Windows Forms Controls and Network Variable (walkthrough), 4-21

- Measurement Studio MCC 488.2 Application (walkthrough), 4-53
- Measurement Studio MCC DAQ Application (walkthrough), 4-41
- Measurement Studio MCC Scan Components Application (walkthrough), 4-47
- new Measurement Studio project, 3-4

## D

- data acquisition (DAQ), 2-8, 2-9
- deployment requirements, 1-2
- developing with Measurement Studio, 3-1
- digital waveform graph control, 2-14, 2-31
- documentation
  - conventions used in the manual, *x*
  - how to use manual set, *ix*
  - NI resources, A-1

## G

- gauge control, 2-18, 2-35
- GPIBConfig, 3-2
- graph control
  - complex, 2-16, 2-32
  - digital waveform, 2-14, 2-31
  - scatter, 2-11, 2-28
  - waveform, 2-11, 2-28

## H

- help
  - NI Measurement Studio Help, 1-5
  - technical support, A-1
- how to use manual set, *ix*

## I

InstaCal, 3-2  
installation, optional, 1-2

## K

knob  
    .NET control, 2-19  
    .NET Web Forms control, 2-36

## L

LED array control, 2-23  
LED control, 2-21, 2-39  
legend control, 2-18, 2-35

## M

MCC-488.2  
    .NET class library, 2-8  
Measurement Studio  
    developing with, 3-1  
    home page, 3-3  
    Menu, 3-1  
    overview, 1-1  
    Preferences, 3-3  
    resources, 1-5  
meter control, 2-19, 2-36

## N

.NET class libraries  
    Analysis, 2-2  
    Common, 2-6  
    MCC-488.2, 2-8  
    Scan Components, 2-9  
    Universal Library, 2-8  
    User Interface, 2-9, 2-27  
Network Variable  
    .NET class library, 2-7  
NI Discussion Forums, 3-3

NI Instrument Driver Network, 3-3  
numeric controls, 2-18, 2-35  
numeric edit  
    .NET control, 2-20, 2-38

## O

overview, Measurement Studio, 1-1

## P

project templates, 3-4  
property editor control, 2-22

## S

scatter graph control, 2-11, 2-28  
slide control, .NET, 2-20, 2-37  
support, technical, A-1  
switch array control, 2-23  
switch control, 2-21, 2-39

## T

tank control, 2-20, 2-37  
technical support, A-1  
thermometer control, 2-20, 2-37

## U

Universal Library .NET class library, 2-8  
User Interface  
    .NET class library, 2-9, 2-27  
    AutoRefresh, 2-40  
    complex graph, 2-16, 2-32  
    digital waveform graph, 2-14, 2-31  
    gauge, 2-18, 2-35  
    knob, 2-18, 2-35  
    LED, 2-21, 2-39  
    legend, 2-18, 2-35  
    meter, 2-18, 2-35

- numeric edit, 2-20, 2-38
- property editor, 2-22
- scatter graph, 2-11, 2-28
- slide, 2-20, 2-37
- switch, 2-21, 2-39
- tank, 2-20, 2-37
- thermometer, 2-20, 2-37
- waveform graph, 2-11, 2-28

## V

- Variable Manager, 3-2

## W

- walkthrough

- Creating a Measurement Studio Application with Webs Forms Controls and Analysis in Visual Studio 2005, 4-11
  - Creating a Measurement Studio Application with Webs Forms Controls and Network Variable in Visual Studio 2005, 4-30

- Creating a Measurement Studio Application with Windows Forms Controls and Analysis, 4-2
  - Creating a Measurement Studio Application with Windows Forms Controls and Network Variable, 4-21
  - Creating a Measurement Studio MCC 488.2 Application, 4-53
  - Creating a Measurement Studio MCC DAQ Application, 4-41
  - Creating a Measurement Studio MCC DAQ Scan Components Application, 4-47

- waveform graph control, 2-11, 2-28

- Web Forms user interface controls, 2-27

- Web resources, A-1

- Windows Forms array controls, 2-23

- LED array control, 2-23
  - switch array control, 2-23

- Windows Forms user interface controls, 2-9