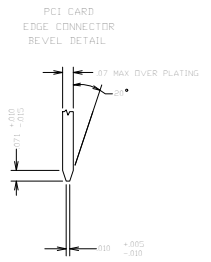
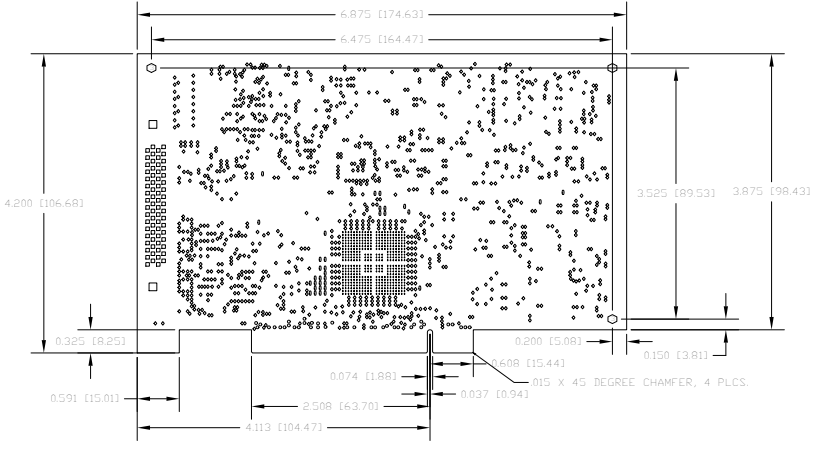


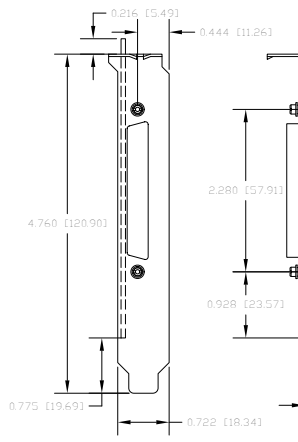
THIS DRAWING CONTAINS PROPRIETARY INFORMATION WHICH IS THE CONFIDENTIAL PROPERTY OF DATA TRANSLATION, INC. IT SHALL NOT BE COPIED, REPRODUCED, STORED, PUBLISHED OR USED IN THE WHOLE OR IN PART WITHOUT THE EXPRESS WRITTEN PERMISSION OF DATA TRANSLATION, INC.

REVISIONS				
DATE	BY	DESCRIPTION	CHECKED	APPROVED
1-10-11		INITIAL RELEASE		

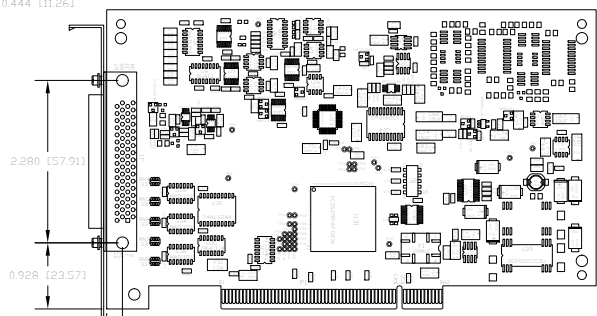
PCB DIMENSIONS AND HOLE LOCATIONS



END VIEW



COMPONENT LOCATIONS



NOTES:  
1. MATERIAL: .062 +/- .005 THICK, FR4.

MAXIMUM COMPONENT HEIGHT  
COMPONENT SIDE = .374 (9.50)  
SOLDER SIDE = .100 (2.54)

DRILL CHART			
ALL UNITS ARE IN MILS			
FIGURE	SIZE	PLATED	QTY
•	10.0	PLATED	456
•	13.0	PLATED	1259
•	20.0	PLATED	37
•	26.0	PLATED	34
□	35.0	PLATED	68
□	109.0	PLATED	2
○	125.0	NON-PLATED	3

COMPONENT CHART			
REF. DES.	MANUFACTURER	MANUFACTURER P/N	DT P/N
J1	FYCO	5787176-7	14843

PCB CHART		DRAWN		DATE		DATA TRANSLATION		
P/N	REV	S. BORDEN		1-10-11		MARLBOROUGH MASSACHUSETTS 01752		
22147	1					SALES DRAWING		
		DO NOT SCALE DRAWING	CHECKED	DATE	DT300-PBF			
		REMOVE ALL BURRS AND	APPROVED	DATE	D			
		SHARP EDGES	DATE		24525			
		HOLE DIMENSIONS SPECIFIED	DATE		0			
		DIMENSIONS ARE IN INCHES	DATE		1 OF 1			
		TOLERANCES	DATE					
		FR ±.01	DATE					
		APP ±.005	DATE					
		HOLE ±.005	DATE					
		FRESH	DATE					