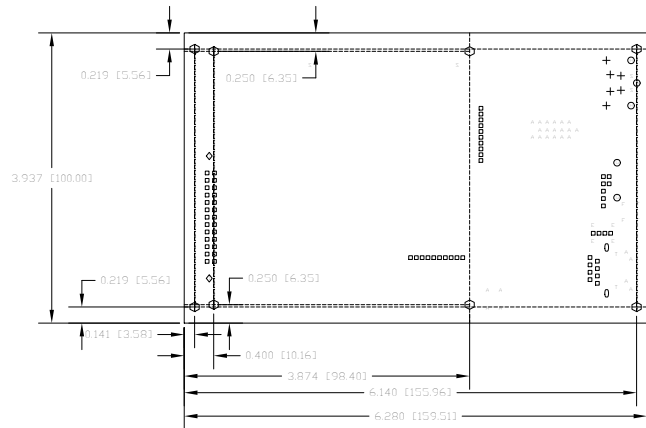


THIS DRAWING CONTAINS PROPRIETARY INFORMATION WHICH IS THE CONFIDENTIAL PROPERTY OF DATA TRANSLATION, INC. IT SHALL NOT BE COPIED, REPRODUCED, DISCLOSED, PUBLISHED OR USED IN THE WHOLE OR IN PART WITHOUT THE EXPRESSED WRITTEN PERMISSION OF DATA TRANSLATION, INC.

OWN	LTR	DESCRIPTION	REVISIONS	
			CHECKED	DATE
SR	0	INITIAL RELEASE		3-14-15
SR	1	REVISED PER ECT 1242K		3-22-15

DT7837 BASE BOARD

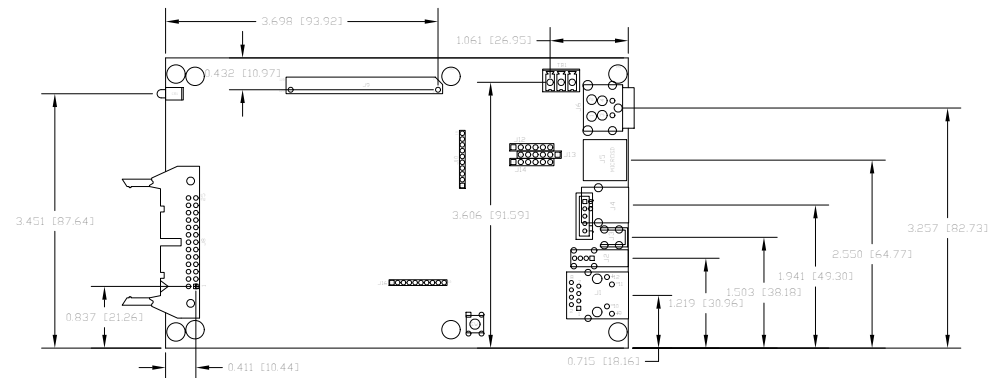
PCB DIMENSIONS AND HOLE LOCATIONS



1. MATERIAL: .0628 +/-0.005 THICK, FR-370HR LAMINATE AND PCL-FRP-370HR PREPREG OR EQUIVALENT,

DRILL CHART: TOP to BOTTOM			
ALL UNITS ARE IN MILS			
FIGURE	SIZE	PLATED	QTY
.	5.0	PLATED	251
•	8.0	PLATED	818
•	10.0	PLATED	135
•	13.0	PLATED	16
•	25.0	PLATED	12
◻	35.0	PLATED	68
•	40.0	PLATED	26
•	47.0	PLATED	3
•	52.0	PLATED	4
◻	62.0	PLATED	2
•	67.0	PLATED	4
◻	86.0	PLATED	3
◻	90.0	PLATED	2
+	105.0	PLATED	6
◻	125.0	PLATED	8
•	67.0	NON-PLATED	4
◻	106.0	NON-PLATED	2
•	130.0	NON-PLATED	2

COMPONENT LOCATIONS



MAXIMUM COMPONENT HEIGHT
SOLDER SIDE = 100 [2.54]

COMPONENT CHART

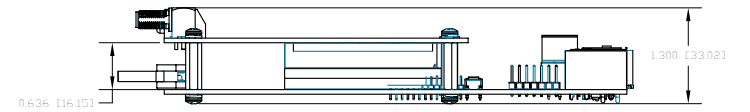
REF	DES	MANUFACTURER	MANUFACTURER P/N	DT P/N
J1		BOTHHAND	LU15D41C-43 LF	23554
J2		TE CONNECTIVITY	292336-1	25757
J3		KEYSTONE	7774	22744
J4		TE CONNECTIVITY	292304-2	17257
J5		MOLEX	503182-1853	25666
J6		KYCON	WPJX-45-S	19326
J8		TE CONNECTIVITY	3493786-6	25787
J9		SAMTEC	0808-960-07A-S-0V-16	25808
J10,14		SAMTEC	TMM-110-01-F-S	25788
J12,13,14		FCI	68000-406HLF	25706
CR1		DIALIGHT	591-3001-002F	25791
SW1		OMRON	B2W-1002	23560
TB1		PHENIX CONTACT	1707434	20381

PCB CHART	
P/N	REV
25793	2

DO NOT SCALE DRAWING REMOVE ALL BURRS AND SHARP EDGES		DRAWN	DATE	DATA TRANSLATION	
UNLESS OTHERWISE SPECIFIED DIMENSIONS ARE IN INCHES TOLERANCES		BY	DATE	MARLBORO MASSACHUSETTS 01752	
XX .XX ANGLES		CHECKED	DATE	SALES DRAWING	
+02 .005 ±12°		APPROVED	DATE	DT7837	
MATERIAL		APPROVED	DATE	DRAWING NO.	
SEE NOTE 1		FINISH	DATE	26008	
NEXT ASSY	USED ON	SCALE	1:1	SHEET	1 OF 2
REV	1				

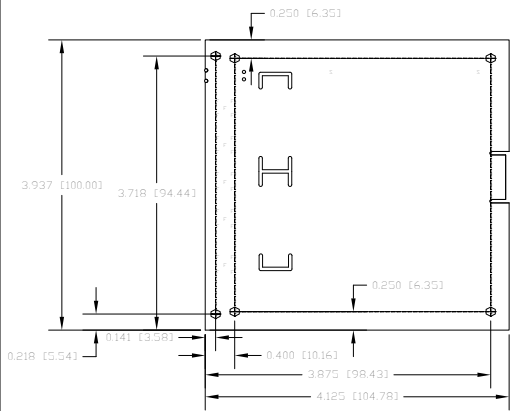
THIS DRAWING CONTAINS PROPRIETARY INFORMATION WHICH IS THE CONFIDENTIAL PROPERTY OF DATA TRANSLATION, INC. IT SHALL NOT BE COPIED, REPRODUCED, DISCLOSED, PUBLISHED OR USED IN THE WHOLE OR IN PART WITHOUT THE EXPRESSED WRITTEN PERMISSION OF DATA TRANSLATION, INC.

DT7837 ASSEMBLY, SIDE VIEW



DT7837 DAUGHTER BOARD

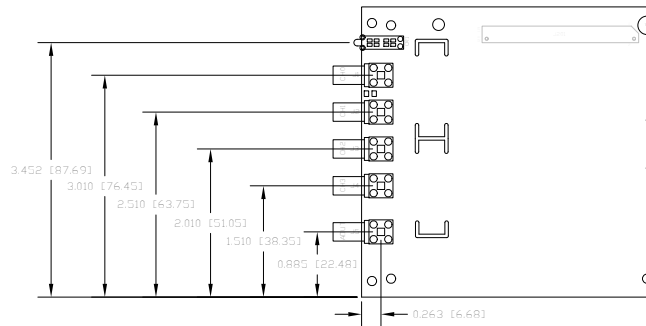
PCB DIMENSIONS AND HOLE LOCATIONS



1. MATERIAL: .062 +/-.005" THICK, FR-370HR LAMINATE AND PCL-FRP-370HR PREPREG OR EQUIVALENT.

DRILL CHART: TOP to BOTTOM			
ALL UNITS ARE IN MILS			
FIGURE	SIZE	PLATED	QTY
•	8.0	PLATED	843
•	13.0	PLATED	36
•	25.0	PLATED	4
•	67.0	PLATED	25
○	125.0	PLATED	1
•	44.0	NON-PLATED	4
•	67.0	NON-PLATED	2
○	125.0	NON-PLATED	5

COMPONENT LOCATIONS



SPACE BETWEEN BASE AND DAUGHTER BOARDS = .436 [11.05]
 MAXIMUM COMPONENT HEIGHT
 COMPONENT SIDE = .415 [10.54]

COMPONENT CHART			
REF. DES.	MANUFACTURER	MANUFACTURER P/N	DT P/N
J1-5	AMPHENOL CONNEX	132203	24270
CR1	DIALIGHT	592-3030-202F	25790
J201	SAMTEC	ERM8-060-090-S-DV-1R	25807

PCB CHART	
P/N	REV
25804	1

DO NOT SCALE DRAWING REMOVE ALL BURRS AND SHARP EDGES		DRAWN 3-14-15	DATE	DATA TRANSLATION MARLBORO MASSACHUSETTS 01752 SALES DRAWING DT7837	
UNLESS OTHERWISE SPECIFIED DIMENSIONS ARE IN INCHES TOLERANCES		CHECKED	DATE		
XX ±.02	.XX ±.005	APPROVED	DATE	TITLE	
MATERIAL SEE NOTE 1		FINISH SEE NOTES		SIZE	REV
NEXT ASSY		USED ON		SCALE	1:1
NEXT PART		USED ON		DRAWING NO. 26008	
				SHEET 2 OF 2 1	