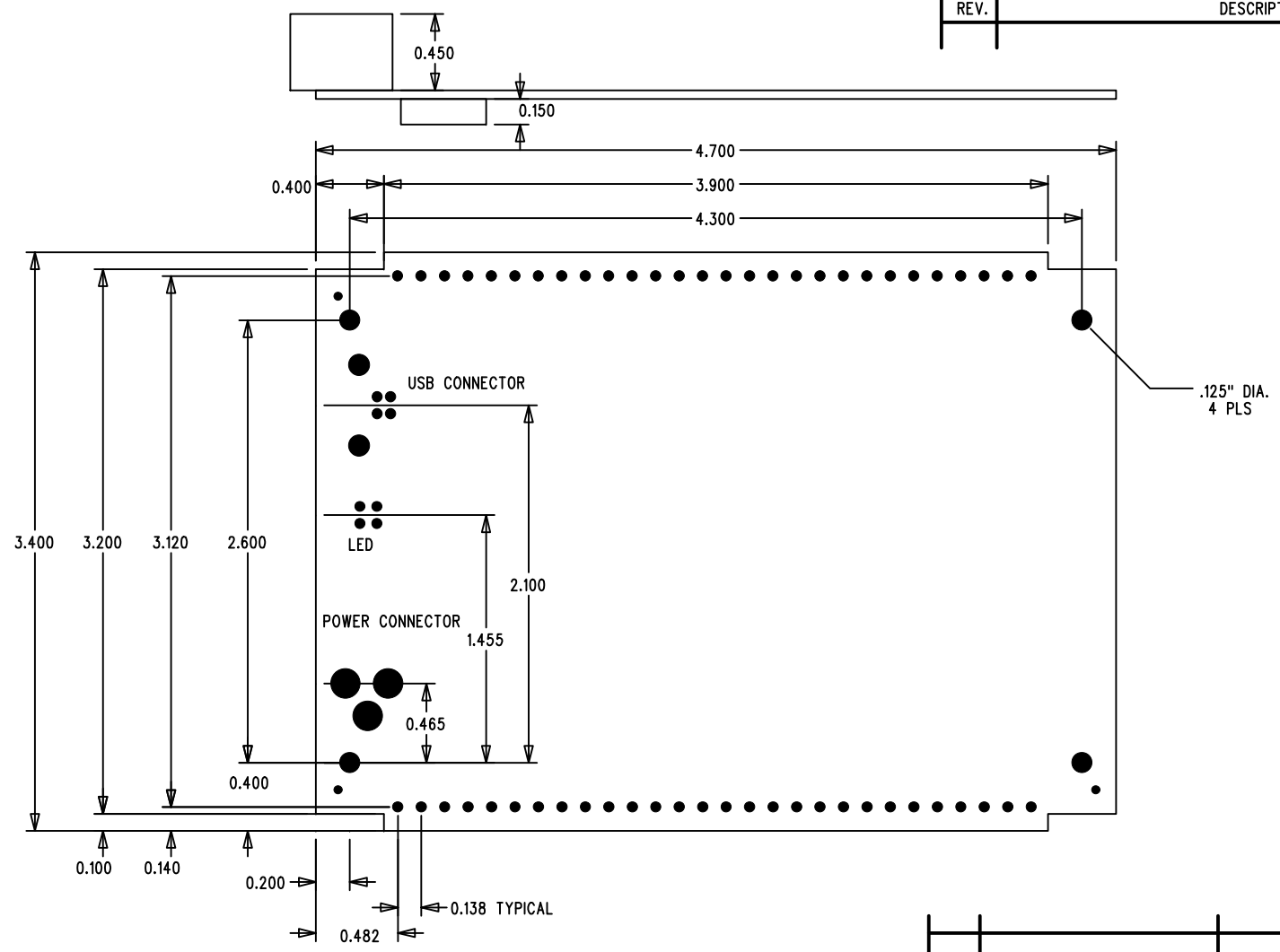



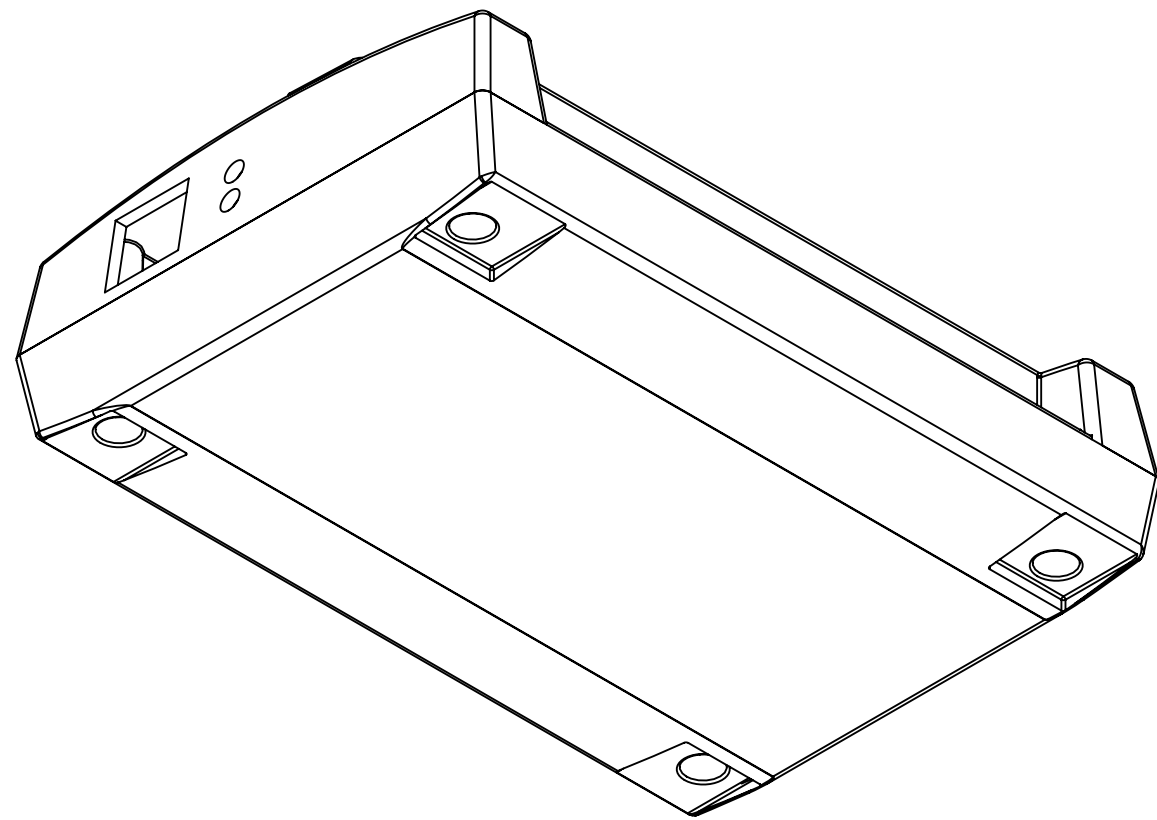
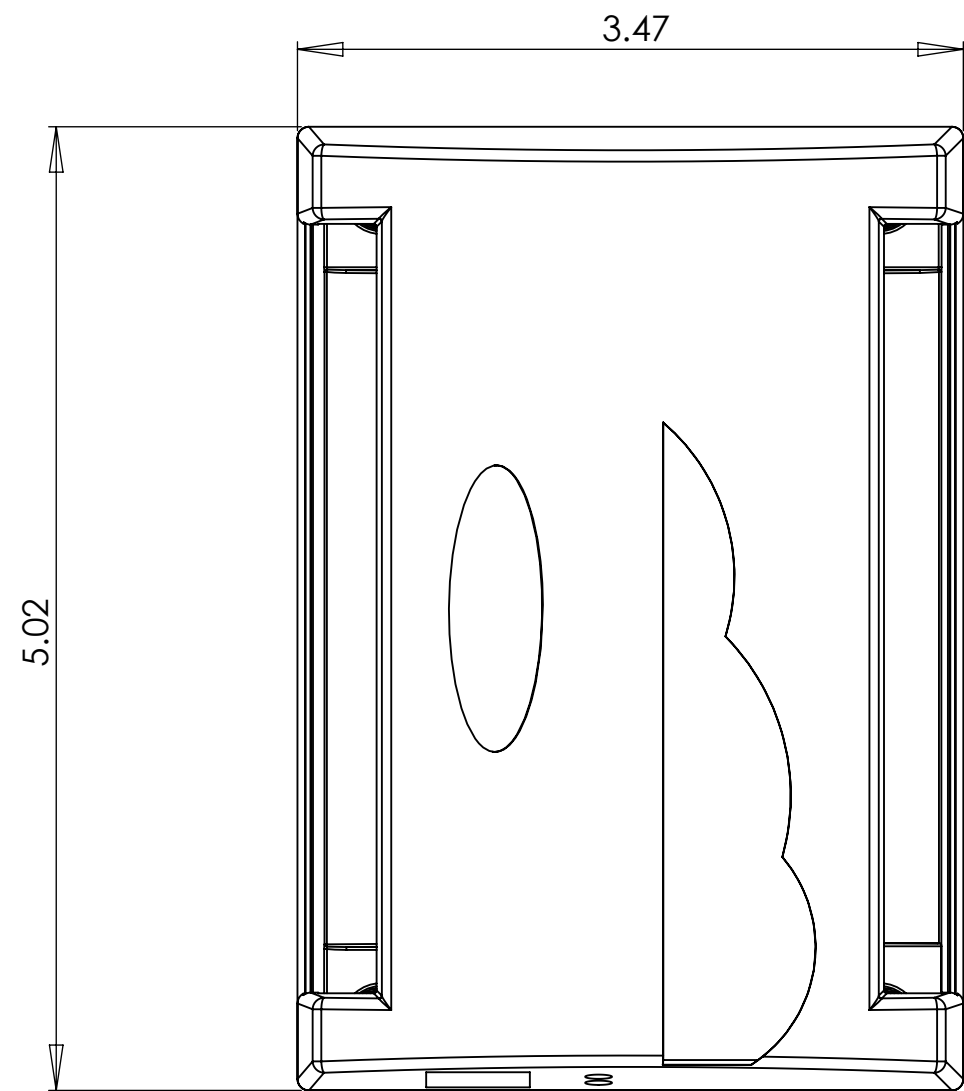
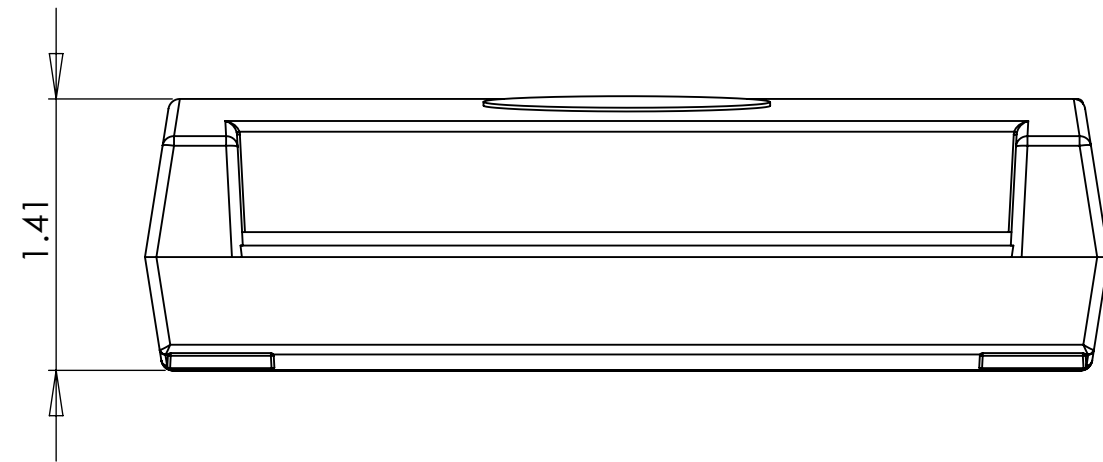
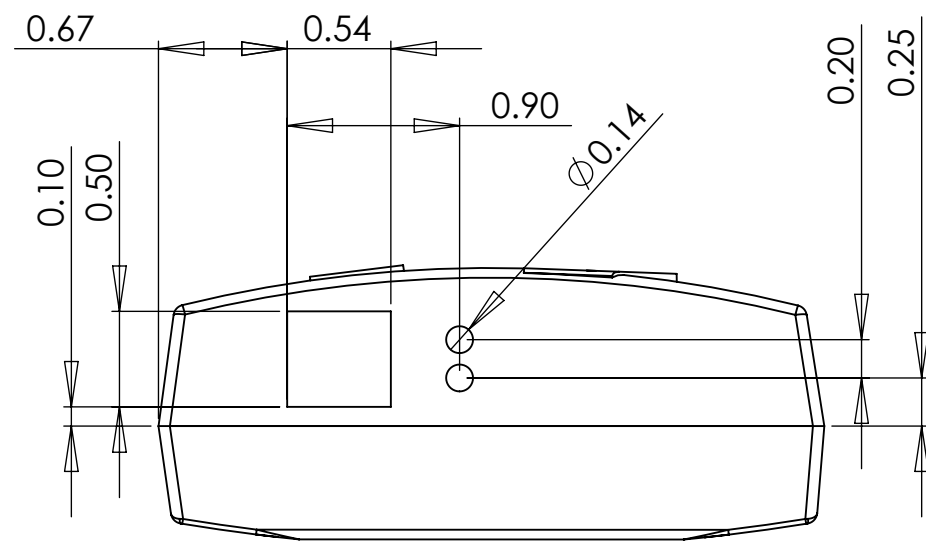
ECO RECORD			
REV.	DESCRIPTION	DATE	APPR



QTY	DESCRIPTION	PART NUMBER	MFR	ITEM
 MEASUREMENT COMPUTING™ NORTON, MA 02766				
BOARD OUTLINE - USB/WLS PRODUCTS				

TOLERANCES; .XX = +/- .01 .XXX = +/- .005 DIMENSIONS IN INCHES	SIZE	DRAWING NUMBER	REV
	A	BO-USBMECH	1

MEASUREMENT COMPUTING CORPORATION - COPYRIGHT (C) 2000



- NOTES:  
 1. BASIC MOLD DIMENSIONS, MATERIAL & COLOR PER DRAWINGS HR-ENCMOLD-MCC.  
 2. HOLE & CUTOUT DIMENSIONS FOR REFERENCE ONLY. VENDOR MOLD CAD DRAWINGS ON FILE.

PROPRIETARY AND CONFIDENTIAL  
 THE INFORMATION CONTAINED IN THIS DRAWING IS THE SOLE PROPERTY OF MEASUREMENT COMPUTING CORP. ANY REPRODUCTION IN PART OR AS A WHOLE WITHOUT THE WRITTEN PERMISSION OF MEASUREMENT COMPUTING CORP IS PROHIBITED.

		UNLESS OTHERWISE SPECIFIED:		NAME	DATE
		DIMENSIONS ARE IN INCHES	DRAWN		
		TOLERANCES:	CHECKED		
		FRACTIONAL ±	ENG APPR.		
		ANGULAR: MACH ± BEND ±	MFG APPR.		
		TWO PLACE DECIMAL ±	Q.A.		
		THREE PLACE DECIMAL ±	COMMENTS:		
		INTERPRET GEOMETRIC TOLERANCING PER:			
		MATERIAL			
		FINISH			
NEXT ASSY	USED ON				
APPLICATION	DO NOT SCALE DRAWING				



TITLE: <b>ENCLOSURE USB</b>		
SIZE <b>C</b>	DWG. NO. <b>HR-ENCUSB</b>	REV <b>2</b>
SCALE: 1:1	WEIGHT:	SHEET 1 OF 1